

VHF POWER MOSFET
N-Channel Enhancement Mode

DESCRIPTION:

BLF145 is Designed for General Purpose Class AB Power Amplifier Applications up to 175 MHz.

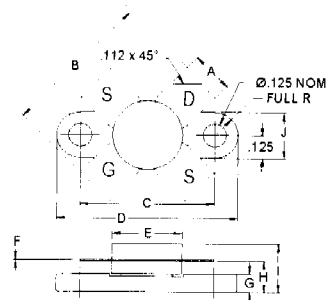
FEATURES:

- $P_G = 20$ dB Typ. at 30 W /28 MHz
- **Omnigold™** Metalization System

MAXIMUM RATINGS

I_D	3.0 A
$V_{(BR)DSS}$	65 V
V_{GSS}	20 V
P_{DISS}	68 W @ $T_C = 25^\circ C$
T_J	-65 °C to +200 °C
T_{STG}	-65 °C to +150 °C
θ_{JC}	2.6 °C/W

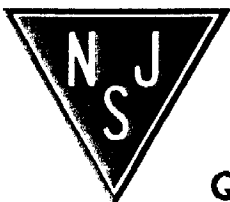
PACKAGE STYLE .380 4L FLG



DIM	MINIMUM inches / mm	MAXIMUM inches / mm
A	.220 / 5.59	.230 / 5.84
B	.785 / 19.94	
C	.720 / 18.29	.730 / 18.54
D	.970 / 24.64	.980 / 24.89
E		.385 / 9.78
F	.004 / 0.10	.008 / 0.15
G	.085 / 2.16	.105 / 2.67
H	.160 / 4.06	.180 / 4.57
I		.280 / 7.11
J	.240 / 6.10	.255 / 6.48

CHARACTERISTICS $T_C = 25^\circ C$

SYMBOL	TEST CONDITIONS		MINIMUM	TYPICAL	MAXIMUM	UNITS
$V_{(BR)DSS}$	$V_{GS} = 0$ V	$I_{DS} = 10$ mA	65	---	---	V
I_{DSS}	$V_{DS} = 28$ V	$V_{GS} = 0$ V	---	---	2.0	mA
I_{GSS}	$V_{DS} = 0$ V	$V_{GS} = 20$ V	---	---	1.0	μ A
V_{GS}	$V_{DS} = 10$ V	$I_D = 10$ mA	2.0	---	4.5	V
$V_{GS1}-V_{GS2}$	$V_{DS} = 10$ V	$I_D = 10$ mA			100	mV
G_{FS}	$V_{DS} = 10$ V	$I_D = 1.5$ A	1.2	---	---	S
C_{iss} C_{oss} C_{rss}	$V_{GS} = 28$ V	$V_{DS} = 0$ V	$f = 1.0$ MHz	125 75 11		pF
P_G η_D	$V_{DD} = 28$	$P_{OUT} = 30$ W	$f = 28$ MHz	20 40		dB %



NJ Semi-Conductors reserves the right to change test conditions, parameter limits and package dimensions without notice. Information furnished by NJ Semi-Conductors is believed to be both accurate and reliable at the time of going to press. However, NJ Semi-Conductors assumes no responsibility for any errors or omissions discovered in its use. NJ Semi-Conductors encourages customers to verify that datasheets are current before placing orders.

Quality Semi-Conductors