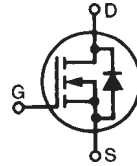


TrenchT4™ Power MOSFET

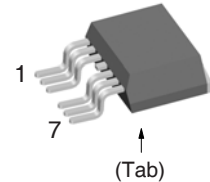
IXTA380N036T4-7

$V_{DSS} = 36V$
 $I_{D25} = 380A$
 $R_{DS(on)} \leq 1.0m\Omega$

N-Channel Enhancement Mode
Avalanche Rated



TO-263 (7-lead)



Pins: 1 - Gate
 2, 3, 5, 6, 7 - Source
 4 (Tab) - Drain

Symbol	Test Conditions	Maximum Ratings	
V_{DSS}	$T_J = 25^\circ C$ to $175^\circ C$	36	V
V_{DGR}	$T_J = 25^\circ C$ to $175^\circ C$, $R_{GS} = 1M\Omega$	36	V
V_{GSM}	Transient	± 15	V
I_{D25}	$T_C = 25^\circ C$	380	A
I_{LRMS}	Lead Current Limit, RMS	160	A
I_{DM}	$T_C = 25^\circ C$, Pulse Width Limited by T_{JM}	830	A
I_A	$T_C = 25^\circ C$	190	A
E_{AS}	$T_C = 25^\circ C$	1.4	J
P_D	$T_C = 25^\circ C$	480	W
T_J		-55 ... +175	$^\circ C$
T_{JM}		175	$^\circ C$
T_{stg}		-55 ... +175	$^\circ C$
T_L	Maximum Lead Temperature for Soldering	300	$^\circ C$
T_{SOLD}	1.6 mm (0.062in.) from Case for 10s	260	$^\circ C$
F_C	Mounting Force	10.65 / 2.2..14.6	N/lb
Weight		3.0	g

Features

- International Standard Package
- $175^\circ C$ Operating Temperature
- High Current Handling Capability
- Avalanche Rated
- Low $R_{DS(on)}$

Advantages

- Easy to Mount
- Space Savings
- High Power Density

Applications

- DC-DC Converts & Off-Line UPS
- High Current Switching Applications
- Primary-Side Switch

Symbol	Test Conditions ($T_J = 25^\circ C$ Unless Otherwise Specified)	Characteristic Values		
		Min.	Typ.	Max.
BV_{DSS}	$V_{GS} = 0V$, $I_D = 250\mu A$	36		V
$V_{GS(th)}$	$V_{DS} = V_{GS}$, $I_D = 250\mu A$	2.0		V
I_{GSS}	$V_{GS} = \pm 15V$, $V_{DS} = 0V$			± 200 nA
I_{DSS}	$V_{DS} = V_{DSS}$, $V_{GS} = 0V$			10 μA
				$T_J = 150^\circ C$ 750 μA
$R_{DS(on)}$	$V_{GS} = 10V$, $I_D = 100A$, Note 1			1.0 m Ω

Symbol	Test Conditions ($T_J = 25^\circ\text{C}$, Unless Otherwise Specified)	Characteristic Values		
		Min.	Typ.	Max.
g_{fs}	$V_{DS} = 10\text{V}$, $I_D = 60\text{A}$, Note 1	105	175	S
R_{Gi}	Gate Input Resistance		1.0	Ω
C_{iss}	} $V_{GS} = 0\text{V}$, $V_{DS} = 25\text{V}$, $f = 1\text{MHz}$		13.4	nF
C_{oss}			2400	pF
C_{rss}			1650	pF
$t_{d(on)}$	} Resistive Switching Times $V_{GS} = 10\text{V}$, $V_{DS} = 0.5 \cdot V_{DSS}$, $I_D = 0.5 \cdot I_{D25}$ $R_G = 5\Omega$ (External)		36	ns
t_r			78	ns
$t_{d(off)}$			125	ns
t_f			80	ns
$Q_{g(on)}$	} $V_{GS} = 10\text{V}$, $V_{DS} = 0.5 \cdot V_{DSS}$, $I_D = 0.5 \cdot I_{D25}$		260	nC
Q_{gs}			60	nC
Q_{gd}			92	nC
R_{thJC}				0.31 $^\circ\text{C/W}$

Source-Drain Diode

Symbol	Test Conditions ($T_J = 25^\circ\text{C}$, Unless Otherwise Specified)	Characteristic Values		
		Min.	Typ.	Max.
I_S	$V_{GS} = 0\text{V}$			380 A
I_{SM}	Repetitive, Pulse width limited by T_{JM}			1520 A
V_{SD}	$I_F = 100\text{A}$, $V_{GS} = 0\text{V}$, Note 1			1.4 V
t_{rr}	} $I_F = 150\text{A}$, $V_{GS} = 0\text{V}$ $-di/dt = 100\text{A}/\mu\text{s}$ $V_R = 30\text{V}$		54	ns
I_{RM}			2.6	A
Q_{RM}			70	nC

Note 1: Pulse test, $t \leq 300\mu\text{s}$, duty cycle, $d \leq 2\%$.

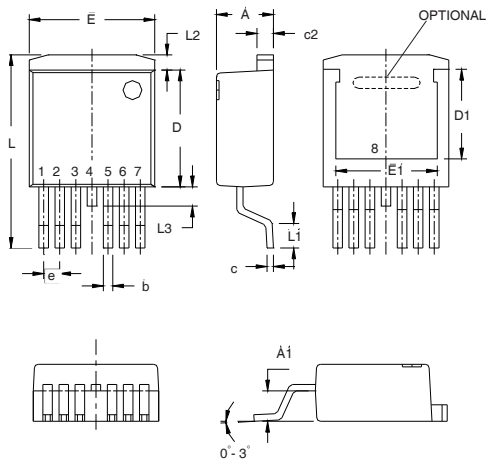
ADVANCE TECHNICAL INFORMATION

The product presented herein is under development. The Technical Specifications offered are derived from a subjective evaluation of the design, based upon prior knowledge and experience, and constitute a "considered reflection" of the anticipated result. IXYS reserves the right to change limits, test conditions, and dimensions without notice.

IXYS Reserves the Right to Change Limits, Test Conditions, and Dimensions.

IXYS MOSFETs and IGBTs are covered by one or more of the following U.S. patents:

4,835,592	4,931,844	5,049,961	5,237,481	6,162,665	6,404,065 B1	6,683,344	6,727,585	7,005,734 B2	7,157,338B2
4,860,072	5,017,508	5,063,307	5,381,025	6,259,123 B1	6,534,343	6,710,405 B2	6,759,692	7,063,975 B2	
4,881,106	5,034,796	5,187,117	5,486,715	6,306,728 B1	6,583,505	6,710,463	6,771,478 B2	7,071,537	

TO-263 (7-lead) (IXTA..7) Outline


Pins: 1 - Gate
 2, 3, 5, 6, 7 - Source
 4 - Drain

SYM	INCHES		MILLIMETER	
	MIN	MAX	MIN	MAX
A	.170	.185	4.30	4.70
A1	.085	.104	2.15	2.65
b	.026	.035	0.65	0.90
c	.016	.024	0.40	0.60
c2	.049	.055	1.25	1.40
D	.355	.370	9.00	9.40
D1	.272	.280	6.90	7.10
E	.386	.402	9.80	10.20
E1	.311	.319	7.90	8.10
e	.050 BSC		1.27 BSC	
L	.591	.614	15.00	15.60
L1	.091	.110	2.30	2.80
L2	.039	.059	1.00	1.50
L3	.000	.059	0.00	1.50