

**SURFACE MOUNT SCHOTTKY  
BARRIER RECTIFIERS**
**SL32FA--SL310FA**
**FEATURES**

- Low leakage
- Low forward voltage drop
- High current capability
- For surface mounted applications
- Easily cleaned with Alcohol, Isopropnol and similar solvents


**MECHANICAL DATA**

- Case: SMAFL molded plastic body
- Terminals: Solder plated, solderable per MIL-STD-202, Method 208
- Polarity: Color band denotes cathode end

**Maximum Ratings** (@TA = 25°C unless otherwise specified)

Characteristic	Symbol	SL32 FA	SL33 FA	SL34 FA	SL345 FA	SL35 FA	SL36 FA	SL38 FA	SL39 FA	SL310 FA	UNITS
Marking code		L32	L33	L34	L345	L35	L36	L38	L39	L3AF	
Maximum repetitive peak reverse voltage	V <sub>RRM</sub>	20	30	40	45	50	60	80	90	100	V
Maximum RMS voltage	V <sub>RWS</sub>	14	21	28	31.5	35	42	56	63	70	V
Maximum DC blocking voltage	V <sub>DC</sub>	20	30	40	45	50	60	80	90	100	V
Maximum average forward rectified current at T <sub>L</sub> =90°C	I <sub>F(AV)</sub>	3.0									A
Peak forward surge current 8.3ms single half-sine-wave	I <sub>FSM</sub>	100									A

**Thermal Characteristics**

Characteristic	Symbol	SL32 FA	SL33 FA	SL34 FA	SL345 FA	SL35 FA	SL36 FA	SL38 FA	SL39 FA	SL310 FA	UNITS
Operating temperature range	T <sub>J</sub>	-55 ---- +125						-55 ---- +150			°C
Storage temperature range	T <sub>STG</sub>	-55 ---- +150									°C

**Electrical Characteristics** (@TA = 25°C unless otherwise specified)

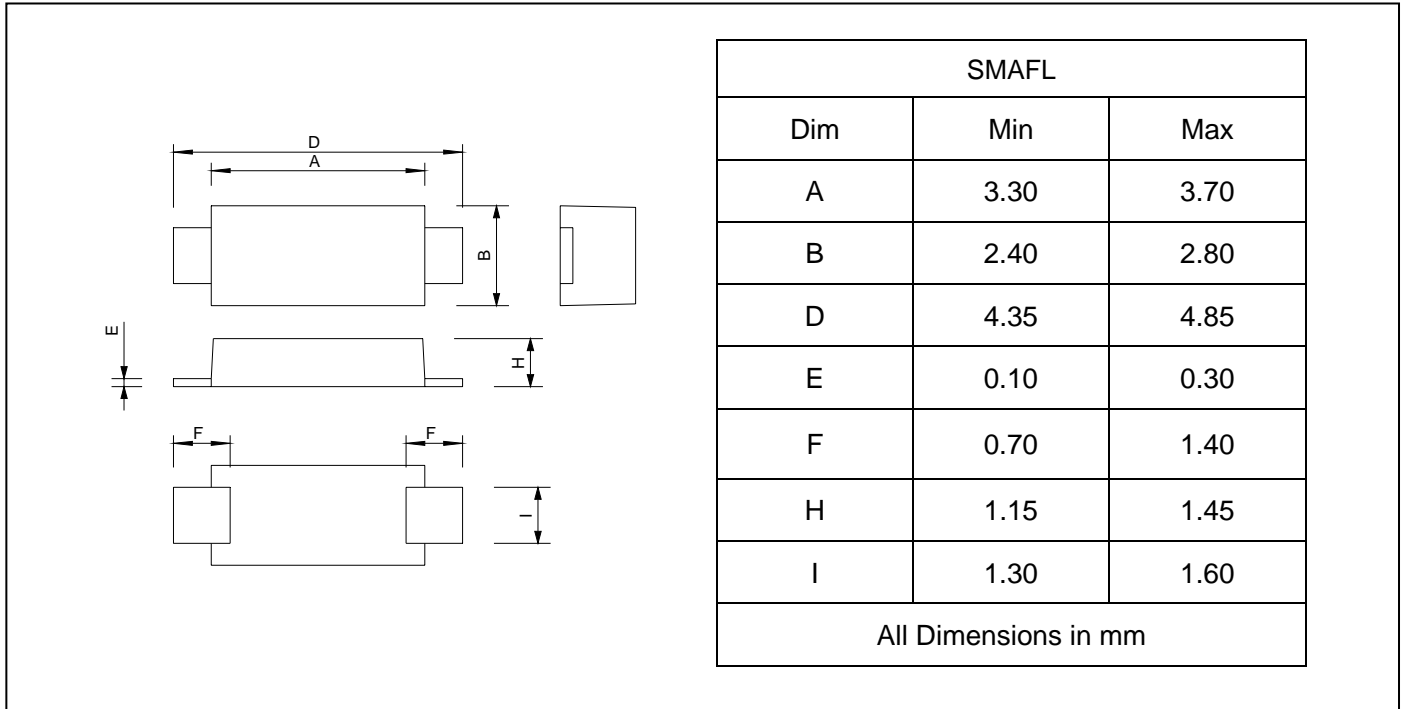
Characteristic	Symbol	SL32 FA	SL33 FA	SL34 FA	SL345 FA	SL35 FA	SL36 FA	SL38 FA	SL39 FA	SL310 FA	UNITS	
Maximum instantaneous forward voltage at I <sub>FM</sub> =3.0A	V <sub>F</sub>	0.45				0.58		0.63			V	
Maximum DC reverse current T <sub>J</sub> =25 °C at rated DC blocking voltage T <sub>J</sub> =125 °C	I <sub>R</sub>	0.5					20					m A



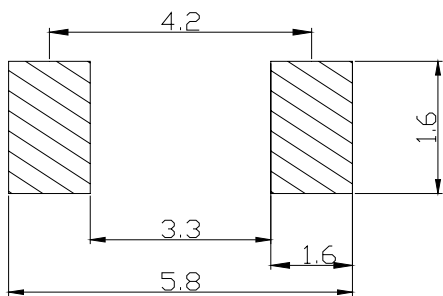
**SURFACE MOUNT SCHOTTKY  
BARRIER RECTIFIERS**

**SL32FA--SL310FA**

**PACKAGE OUTLINE DIMENSIONS**



**SOLDERING FOOTPRINT**



Unit : mm

**PACKAGE INFORMATION**

Device	Package	Shipping
SL32FA--SL310FA	SMAFL	10000/Tape&Reel