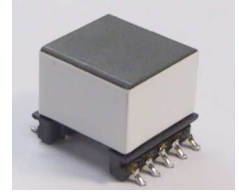


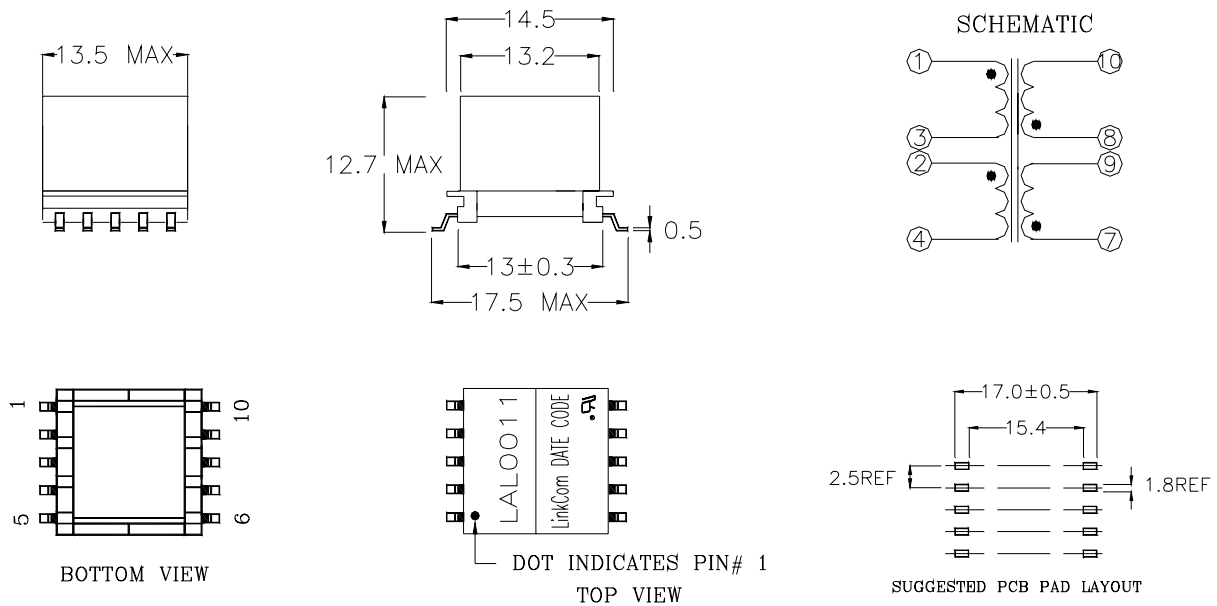
ADSL TRANSFORMER

FEATURES

- DESIGNED FOR ITEX / ALCATEL CHIPSET
- LOW TOTAL HARMONIC DISTORTION
- SURFACE MOUNT TECHNOLOGY COMPATIBLE



DIMENSIONS [m / m]



ELECTRICAL SPECIFICATIONS @ 25°C

TEST	LIMIT	UNIT	TOLERANCE	REMARK
DC RESISTANCE	1.09	Ω	± 10%	PIN 8 - 10
DC RESISTANCE	1.47	Ω	± 10%	PIN 7 - 9
DC RESISTANCE	1.28	Ω	± 10%	PIN 1 - 3
DC RESISTANCE	1.25	Ω	± 10%	PIN 2 - 4
INDUCTANCE	470	uH	± 5%	10 KHz, 100mVAC, Ls, 1 - 4 TIE 2 + 3
LEAKAGE INDUCTANCE	13	uH	MAX	200 KHz, 100mVAC, Ls, 1 - 4 TIE 2 + 3 8 + 9 10 + 7
BREAKDOWN VOLTAGE	1500	Vrms	-	PRI TO SEC, 60 SECONDS, 1mA
TURN RATIO	1 : 1 : 1 : 1	-	± 1%	PIN (8 - 10) : (7 - 9) : (1 - 3) : (2 - 4)

NOTE