



CSS0214P Series SMD WIRE WOUND POWER INDUCTORS (SHIELDED)

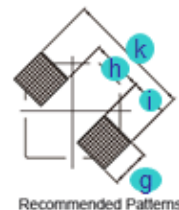
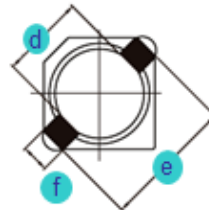
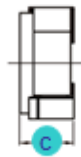
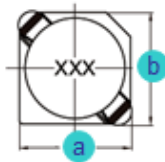
Rev. A

A. Electrical Specifications:

P/N	Marking	Inductance (μH)	Test Freq. (KHz)	DCR Max. (mΩ)	Rated Current (mA)	I sat (mA)
CSS0214P-1R5N	1R5	1.5	100	63	2000	1800
CSS0214P-1R8N	1R8	1.8	100	75	1800	1650
CSS0214P-2R2N	2R2	2.2	100	94	1600	1500
CSS0214P-2R7N	2R7	2.7	100	106	1400	1350
CSS0214P-3R3N	3R3	3.3	100	125	1240	1200
CSS0214P-3R9N	3R9	3.9	100	138	1120	1100
CSS0214P-4R7N	4R7	4.7	100	169	1000	1000
CSS0214P-5R6N	5R6	5.6	100	188	980	950
CSS0214P-6R8N	6R8	6.8	100	213	920	850
CSS0214P-8R2N	8R2	8.2	100	281	800	800
CSS0214P-100N	100	10.0	100	294	760	700
CSS0214P-120N	120	12.0	100	394	640	620

B. Dimensions: mm (Inch)

Series	a	b	c	d	e	f	g	h	i	k
CSS0214P	3.2 (0.126)	3.2 (0.126)	1.55 (0.061)	∅2.1 (0.083)	3.3 (0.130)	1.0 (0.039)	1.3 (0.051)	1.7 (0.067)	1.3 (0.051)	4.3 (0.169)
Tol.	Max.	Max.	Max.	±0.1 (0.004)	Typ.	Typ.	Typ.	Typ.	Typ.	Typ.



C. General Information:

- CSS0214P-xxx_, "CSS0214P" = P/N, "xxx" = Inductance, "_" = Tolerance.
- Tolerance "_": N: ± 30%, M: ± 20%, L: ± 15%.
- Operating temperature range: -30°C to +100°C (Including self-heating).
- Storage temperature: -40°C to +85°C.
- Inductance measured using the HP4284A and Chroma 1320 & 3302.
- DCR measured using Chroma 16502 milliohm meter.
- Inductance drop no more than 35% of initial value at Isat, temperature rise Δt < 40°C at rated current.
- Inductance and Current range: From 1.5 μH (2000mA) to 12.0 μH (640mA).
- MSL: Level 1.

D. Applications:

- Game Consoles
- Set Top Boxes
- Cables Modems
- Computers
- Mobile Communication Devices (Cell Phones, Radios, etc.)
- PDA, LCD, DVD, BRP, HD.

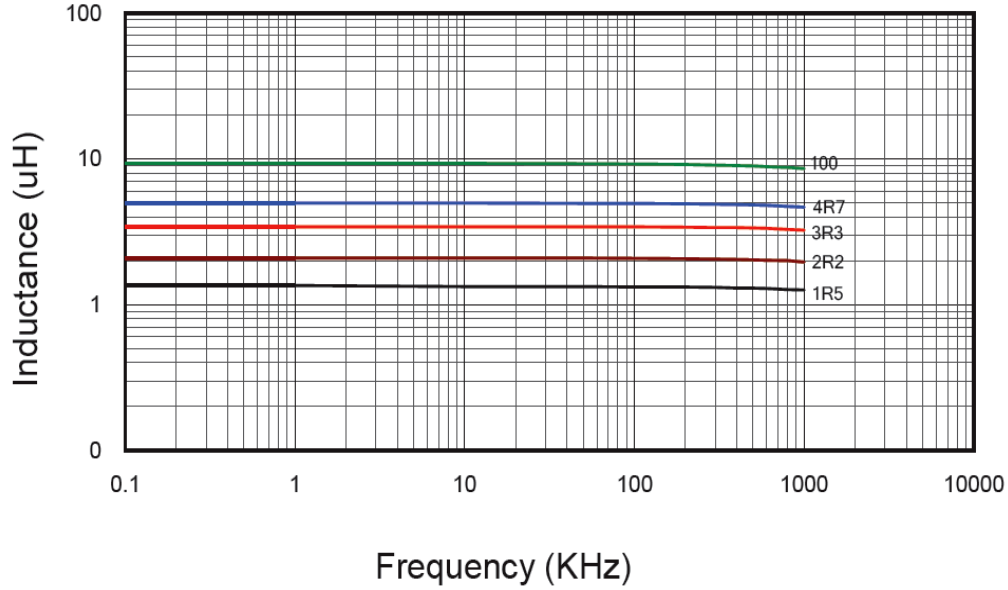


CSS0214P Series SMD WIRE WOUND POWER INDUCTORS (SHIELDED)

Rev. A

E. Characteristics Curve:

Inductance vs. Frequency



Inductance vs. DC Current

