

SCHEMATIC

SPECIFICATIONS

- FUNCTION: 1P2T ON-ON
- RATING: 2A 48VDC
- ILLUMINATION VOLTAGE: 2.8V 20mA
- CONTACT RESISTANCE: Min. at 1A, 12VDC
- INSULATION RESISTANCE: 1,000MΩ Min. at 500VDC
- DIELECTRIC STRENGTH: 2,000VAC Min. for 1 Minute
- ELECTRICAL LIFE: 50,000 Cycles
- MECHANICAL LIFE: 1,000,000 Cycles
- TEMPERATURE: Operating: -20°C to 70°C
- INGRESS PROTECTION: IP65

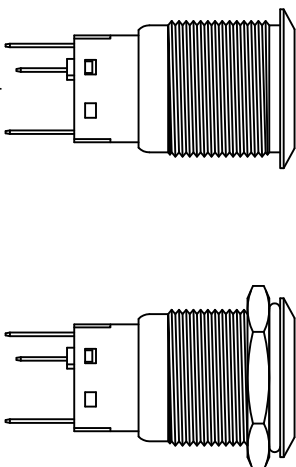
APPROVALS:
ROHS
COMPLIANT

MATERIALS

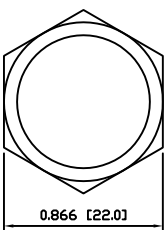
- BUSHING: Aluminum
- BASE: Polycarbonate (PC)
Polybutylene Terephthalate (PBT)
- ACTUATOR: Aluminum
Polycarbonate (PC)
- HARDWARE: Nickel Plated Brass (H59)
- SEALING: Silicone Rubber
- INNER ASSEMBLY: Polyurethane (POM)
Phosphor Bronze
- SPRING: Spring Steel
- CONTACTS: Silver/Cadmium Oxide (AgCdO)
- TERMINALS: Silver Plated Brass (H62)
Silver Plated Phosphor Bronze
- O-RINGS: Silicone Rubber

COLORS AND FINISH

- BEZEL: Black
Anodized Finish
- ACTUATOR: Black
Anodized Finish
- ILLUMINATION: Blue (Forward)
Blue (Reverse)
- MARKING: None

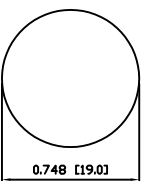


EXPLODED VIEW

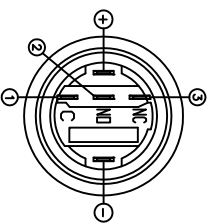


ASSEMBLED VIEW

SUGGESTED PANEL CUTOUT



MAXIMUM PANEL THICKNESS: 0.433 [11.0mm]



REV.	DATE	BY	CHK
A	09/07/24	CAB	
B	09/07/24	CAB	
A	09/10/19	CAB	

THE INFORMATION CONTAINED IN THIS DOCUMENT IS PROPRIETARY TO E-SWITCH AND IS NOT TO BE COPIED OR TRANSMITTED

INITIAL RELEASE DESCRIPTION

FOR DATE DRAWN BY

SCALE DRAWING NOT TO SCALE

DRAWING NUMBER 52-PV4F23011341

DATE NOVEMBER 30, 2009

REVISION A



PV4F23011-341