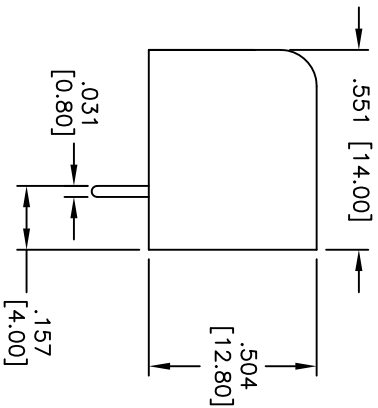
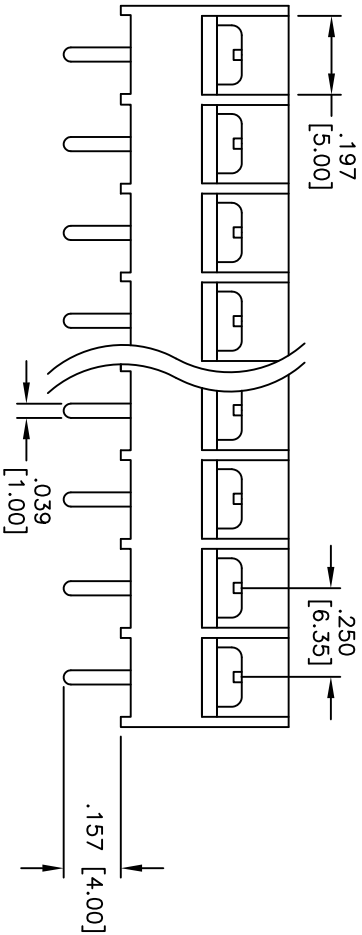
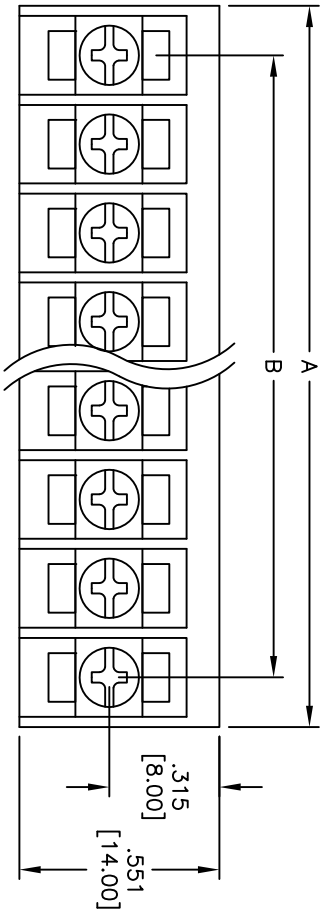


APPROVED: _____
 DATE: _____ TITLE: _____

Rev	AWO #	Description	Date	Appr
-		RELEASED	6/7/05	
A		REDRAWN	7/12/12	



SPECIFICATIONS:

Material:

Insulator: PA66, rated UL 94V-0

Insulator color: Black

Contacts: Brass, Tin Plated

Screws: M3, Nickel Plated Steel

Electrical:

Operating voltage: 300 VAC max.

Current rating: 10 Amps max.

Insulation resistance: 1,000 Mohms min. @ DC500V

Dielectric withstanding voltage: 2,000 VAC for 1 minute

Mechanical:

Wire Range(AWG): 16~22

Screw Torque Value (Kg-cm): 10

Temperature Rating:

Operating temperature: -40°C to +120°C

Environmental:

Lead free, RoHS compliant

Positions: 2 thru 32
 A = .250 [6.35] x No. of Positions + .051 [1.30]
 B = .250 [6.35] x No. of Spaces

UNLESS OTHERWISE SPECIFIED
 ALL DIMENSIONS ARE INCHES [MM]
 TOLERANCES: EXCEPT AS NOTED
 INCHES

X	± .10	ØX	± .10
.XX	± .020	ØXX	± .015
.XXX	± .015	ØXXX	± .010

APPROVALS: _____ DATE: _____

DRAWN: SS 6/7/05

CHECKED: _____

APPROVED: _____

ADAM TECH

909 Rahway Avenue, Union, NJ 07083

Phone: 908-687-5000 Fax: 908-687-5710

TITLE: 250 [6.35] CLOSED SIDE BARRIER BLOCK

VERTICAL, PCB TAILS, BARRIER ENDS

SIZE: X PART NO. TBB-XX-01-B REV. A

REF: S00031T SCALE: NTS SHEET 1 OF 1



6 5 4 3 2 1