

DETAILS

Product Number	CA11173_TINA2-O
Family	Tina
Type	Assembly
Color	black
Diameter	16,1 mm
Height	11 mm
Style	round
Optic Material	PMMA
Holder Material	
Fastening	tape
Status	production ready
ROHS Compliant	Yes
Date Updated	20/11/2012



OPTICAL PROPERTIES

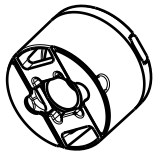
LED	Viewing Angle	Light Beam	Efficiency	cd/lm	Connector
MX-6	34+21 deg	Oval	85 %	2.500	-
NS6x83	34+22 deg	Oval	87 %	2.700	-
NS3x83	36+22 deg	Oval	83 %	2.190	-

D

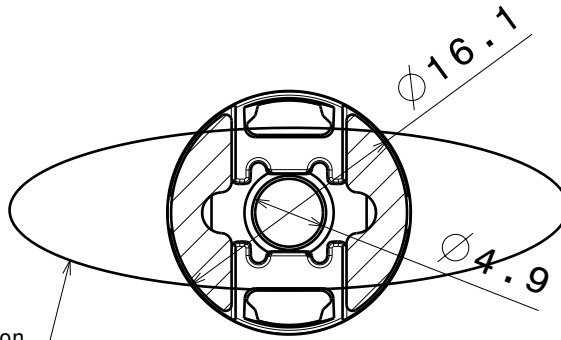
C

B

A



Isometric view
Scale: 1:1



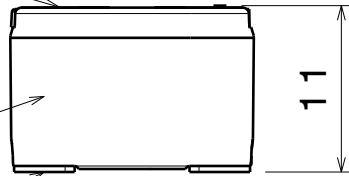
Bottom view

Oval beam direction
90dg version has opposite direction

Lens

Holder

Tape



Front view

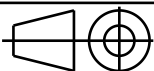
MATERIALS
Lens: PMMA
Holder: PC
Tape: PU Foam

Tolerances if not otherwise shown
According to DIN ISO 2768-1
Linear measures:
Up to 30mm class M, otherwise class C.
According to DIN ISO 2768-2
Form and position: class L
Control for SPC marked dimensions.

LEDiL

Ledil Oy
Salorankatu 10
FIN 24240 SALO
Finland

THIRD ANGLE PROJECTION:



DRAWING TITLE

Datasheet Tina2-oval assy

20121120

ah

SIZE

PART NUMBER

-

-

SCALE

1:1

WEIGHT

-

SHEET

-

D

A

4

4

3

3

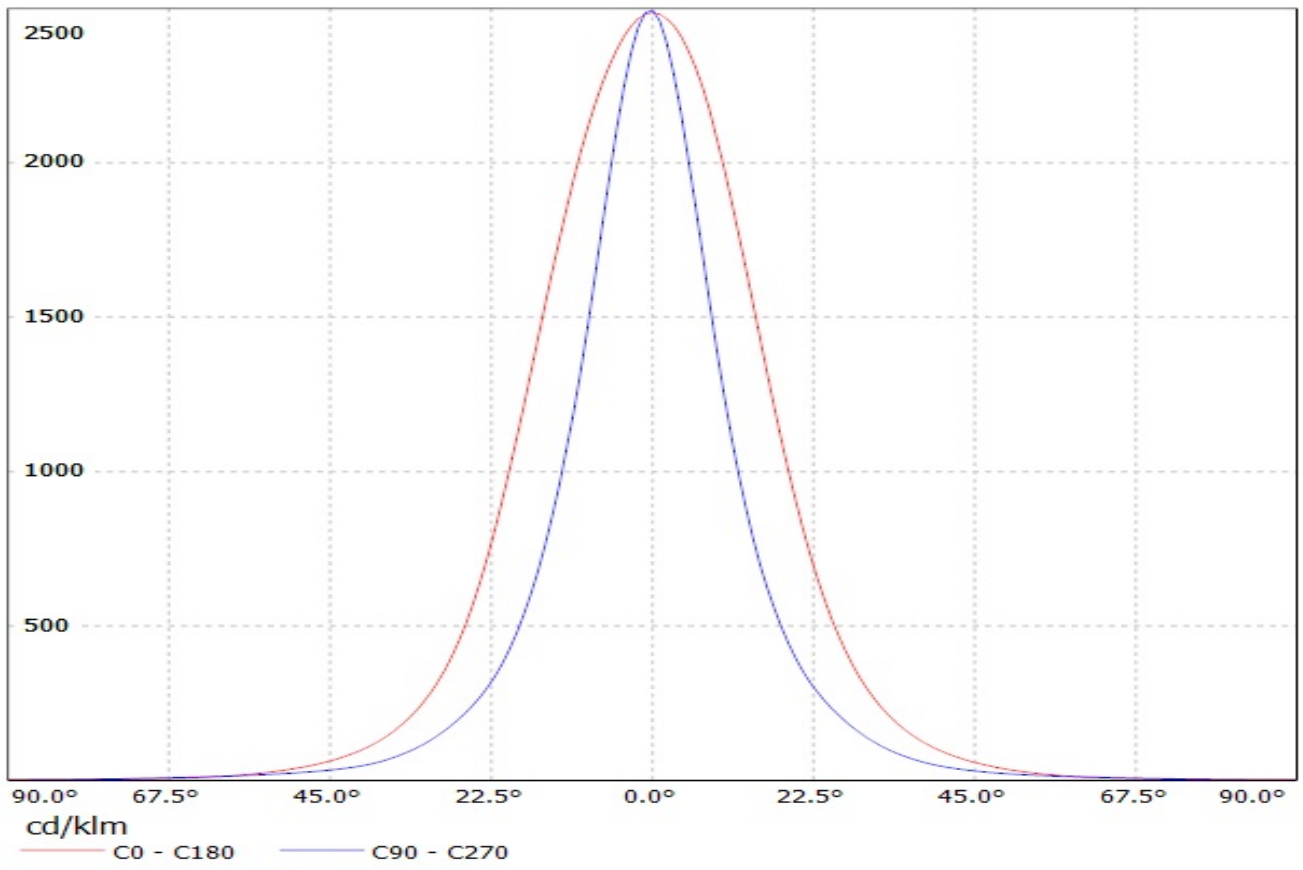
2

2

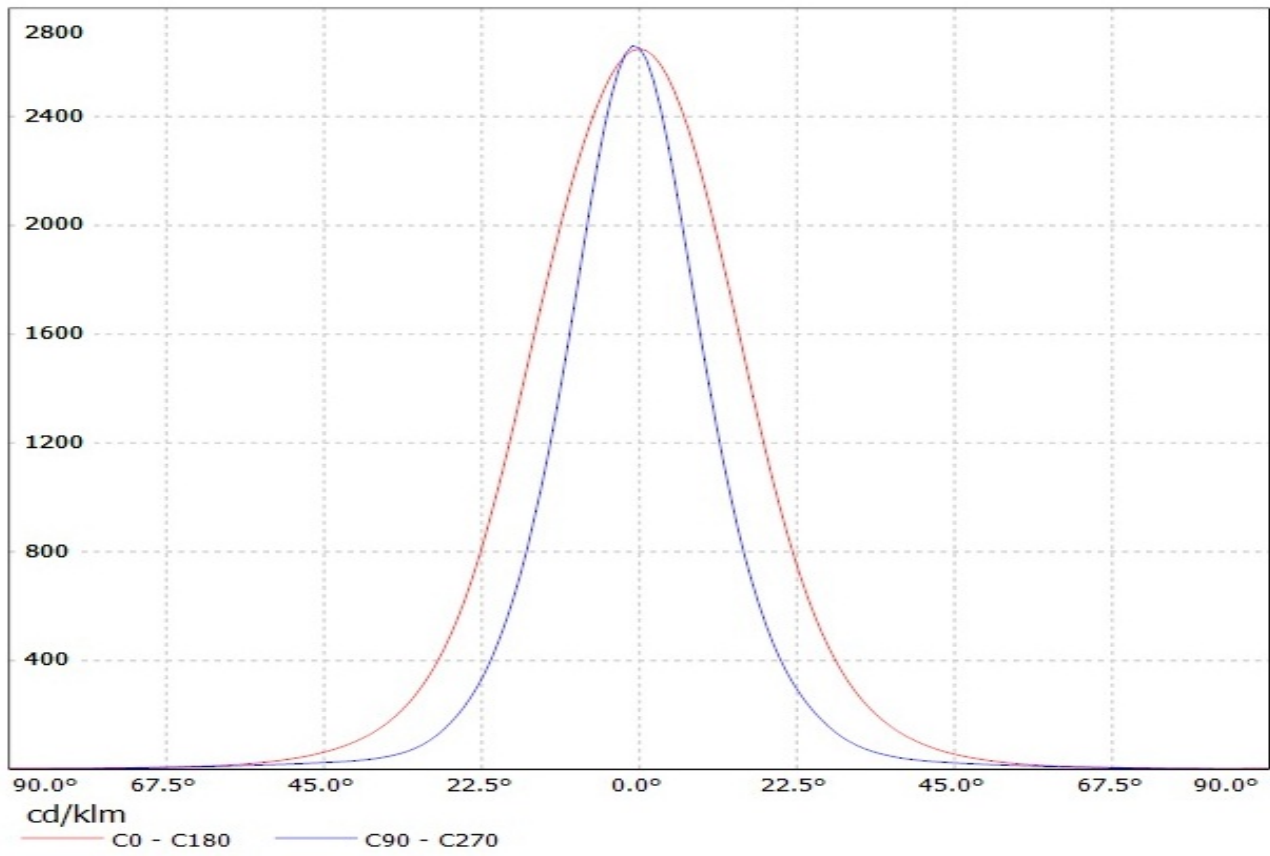
1

1

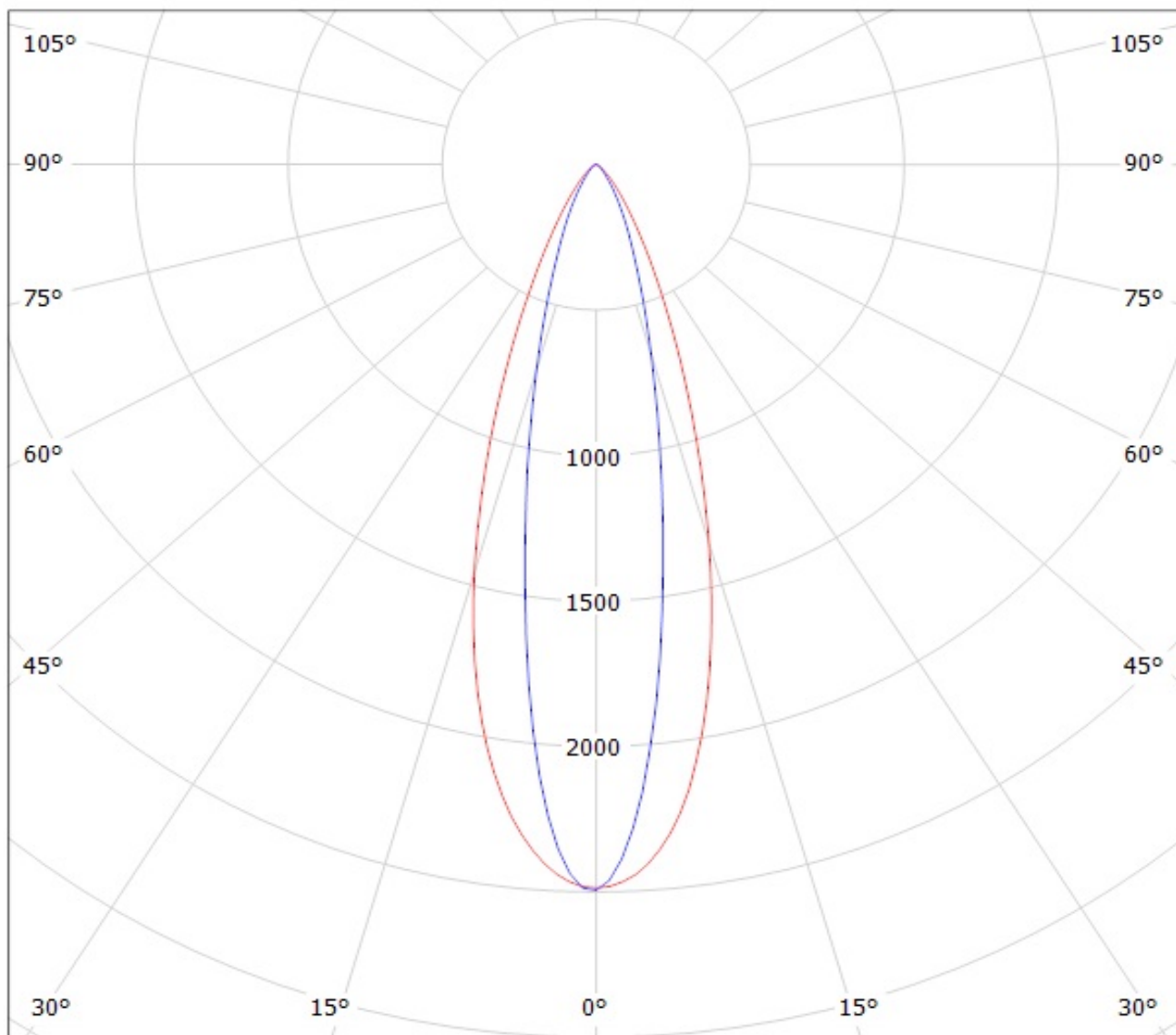
Luminaire: LEDIL OY CP12684_TINA2-O / CA11173_TINA2-O (Cree MX-6) Efficiency=85%
Lamps: 1 x Cree MX-6 (67lm @ 250mA)



Luminaire: LEDIL OY CP12684_TINA2-O / CA11173_TINA2-O (Nichia NS6x83) Efficiency=87%
Lamps: 1 x Nichia NS6x83 (76lm @ 250mA)



Luminaire: LEDIL OY CP12684_TINA2-O / CA11173_TINA2-O (Cree MX-6) Efficiency=85%
Lamps: 1 x Cree MX-6 (67lm @ 250mA)

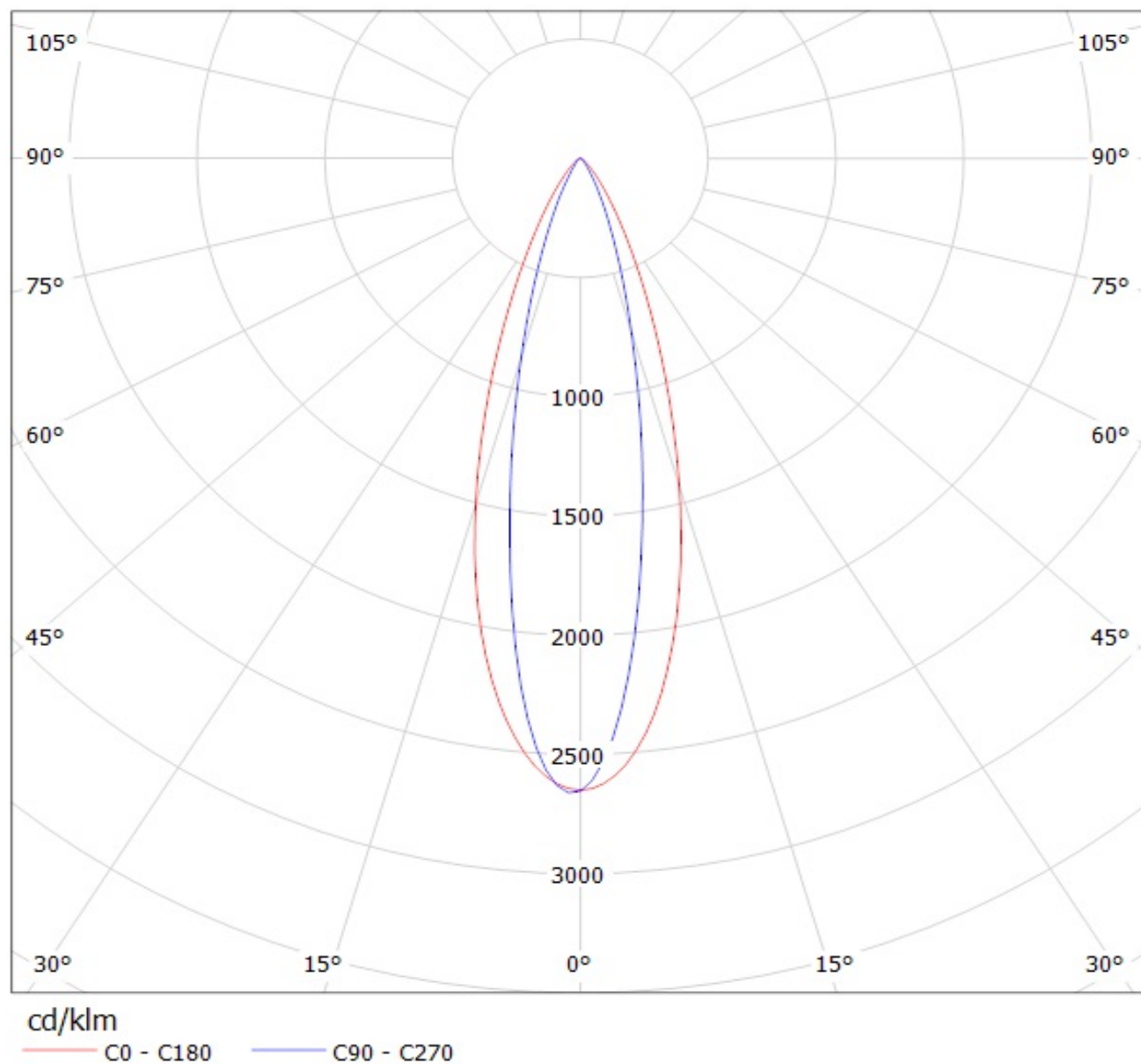


cd/klm

— C0 - C180

— C90 - C270

Luminaire: LEDIL OY CP12684_TINA2-O / CA11173_TINA2-O (Nichia NS6x83) Efficiency=87%
Lamps: 1 x Nichia NS6x83 (76lm @ 250mA)



NOTE: The typical divergence will be changed by different color, chip size and chip position tolerance. The typical total divergence is the full angle measured where the luminous intensity is half of the peak value.