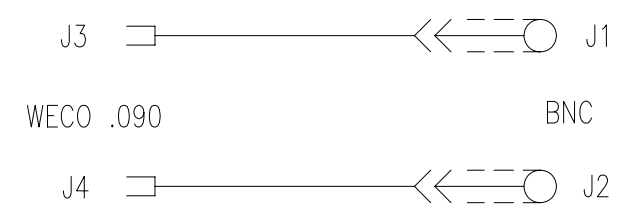
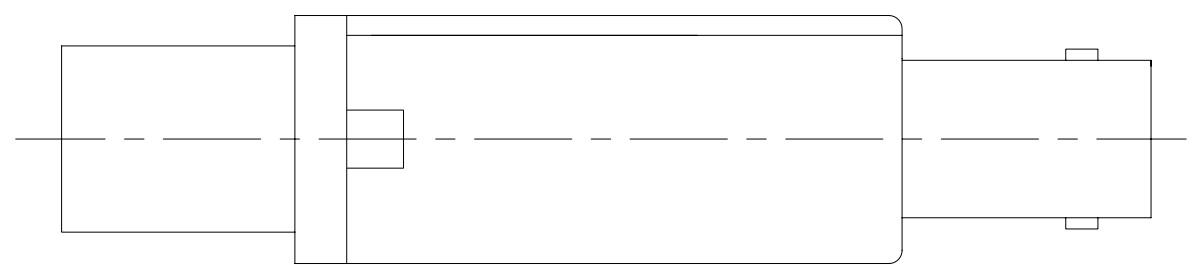
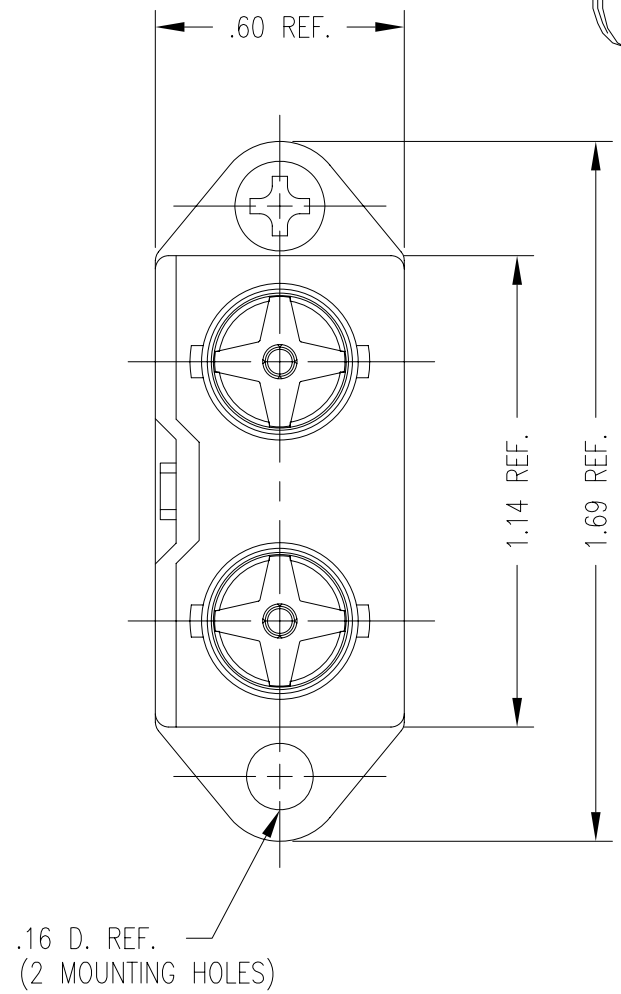
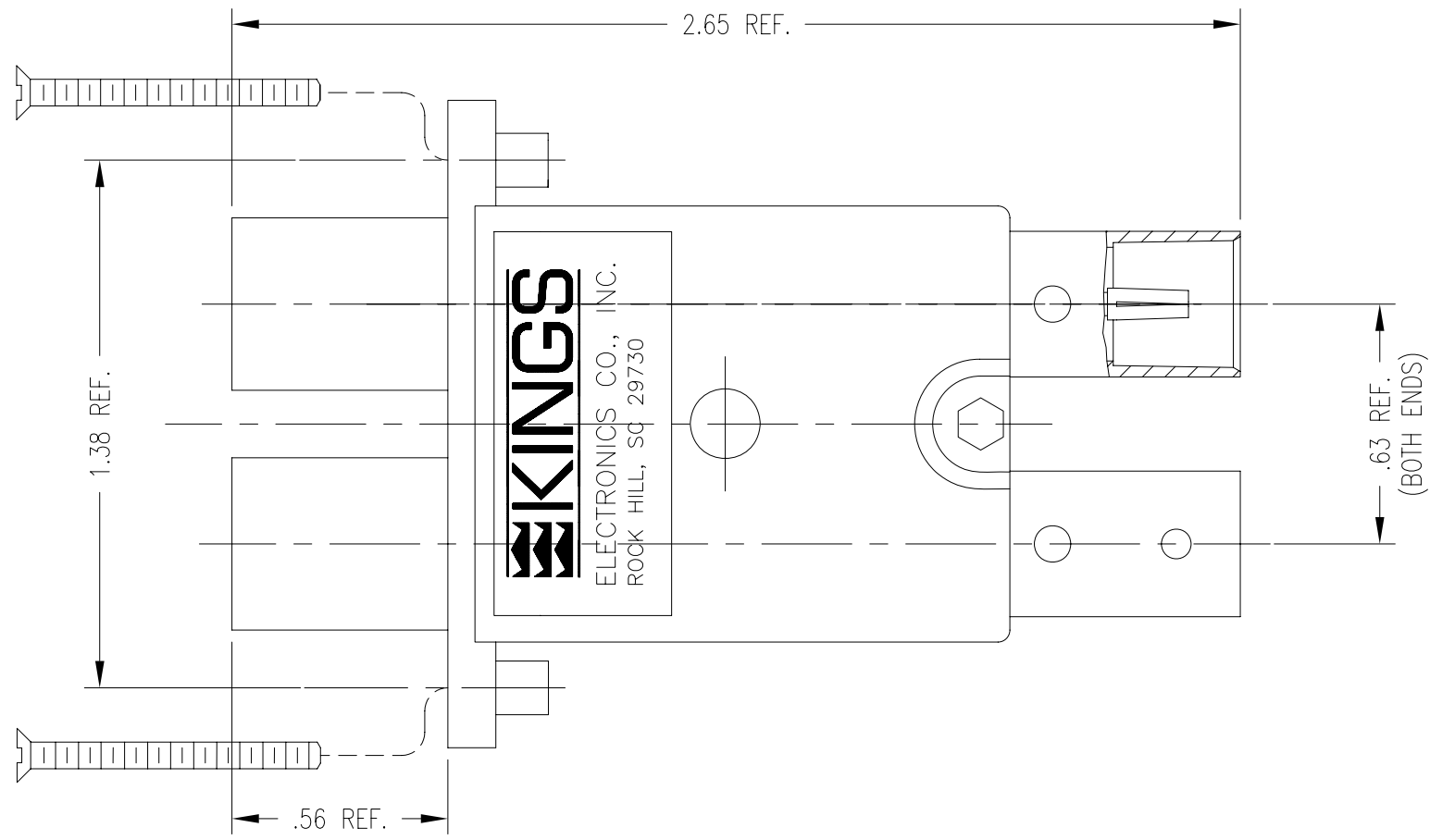


GSD

SD7780-7

REVISIONS	
ISSUE	CHANGES
0	ER 38895 JLA 07/23/03
1	CN 39090 E JLA 05/07/04
2	CN 39197 C JLA 12/07/04
3	CN 39251 C JLA 03/21/05
E	ER 14290 PSM 03/16/09



- NOTES:
- INTERFACE PER MIL-STD-348, FIG. 301-2 (AS APPLICABLE).
  - MATERIALS:
    - BODY: ZINC (ZAMACK)
    - CONTACTS: BER. COPPER, ASTM-B-196
    - INSULATING MATERIALS: ZYTEL, ASTM-D-4894
    - HARDWARE: STAINLESS STEEL
    - ALL OTHER METAL PARTS: BRASS, ASTM-B16
  - FINISHES:
    - CONTACTS: HARD GOLD PLATE PER MIL-G-45204 OVER NICKEL PLATE PER QQ-N-290.
    - HARDWARE: PASSIVATE PER QQ-P-35
    - ALL OTHER METAL PARTS: NICKEL PER QQ-N-290
  - MECHANICAL CHARACTERISTICS: 50,000 LIFE CYCLES MIN.
  - ELECTRICAL CHARACTERISTICS:
    - IMPEDANCE: 75 OHMS
    - FREQUENCY RANGE: DC TO 3.5 GHz.
    - RETURN LOSS (PATCH THRU MODE):
      - UP TO 1.5 GHz, <-20dB
      - UP TO 3.5 GHz, <-10dB
  - COMPLIANT TO SMPTE 424M (3G-SDI) SPECIFICATION.

7780-7SD

SCALE 2:1	
APPROX SURFACE AREA	
USED ON	
REF:	
HIGH DEFINITION, DUAL VIDEO JACK STD SIZE (FEED THRU)	
DRAWN JLA	DATE 07/23/03
DESIGN JLA	DATE 07/23/03
APPR.	DATE
<b>KINGS</b> by WINCHESTER ELECTRONICS	Winchester Electronics 62 Barnes Industrial Road North Wallingford, CT 06492
B	SIZE

GSD

SD7780-7