

THIS DRAWING IS UNPUBLISHED.

RELEASED FOR PUBLICATION

20

© COPYRIGHT 20 BY -

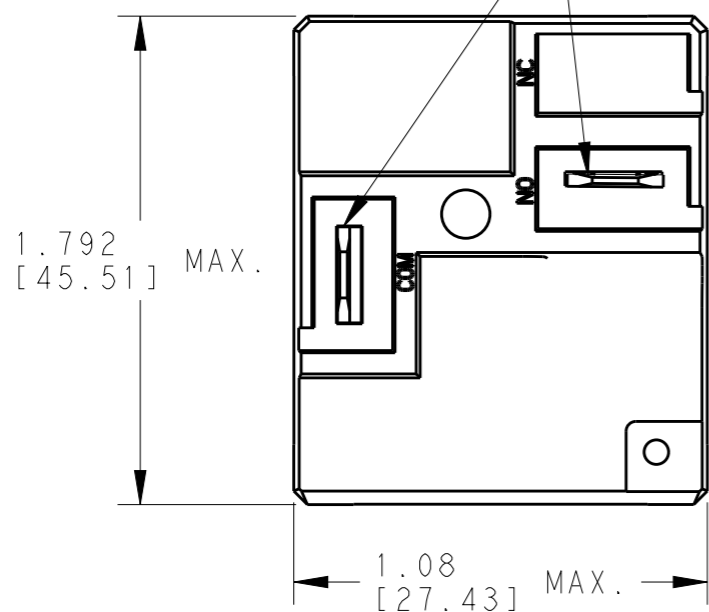
ALL RIGHTS RESERVED.

LOC HB DIST 00

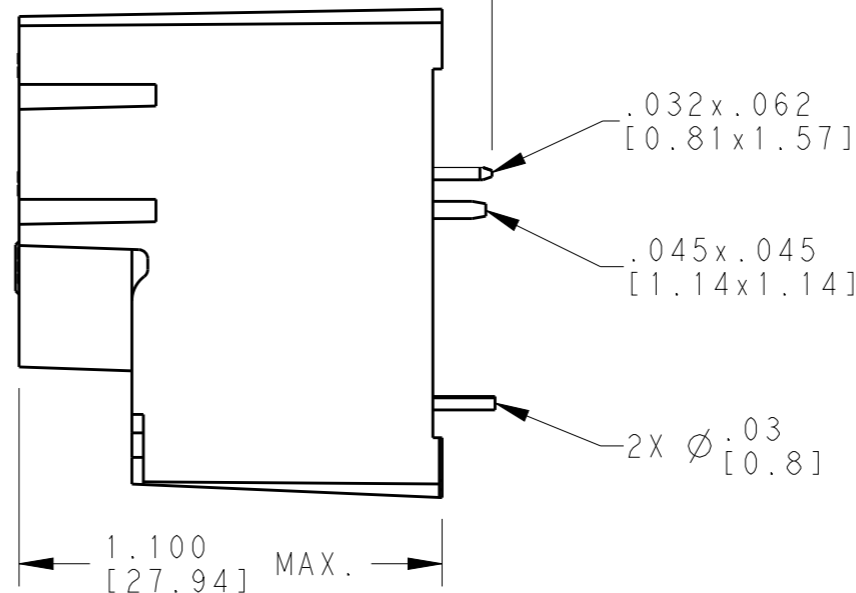
REVISIONS

P	LTR	DESCRIPTION	DATE	DWN	APVD
	E	ECR-09-027847	03FEB2010	JS	GK
	F	CHANGE TE LOGO, ECO-12-005755	24AUG2012	HL.C	BH.Y

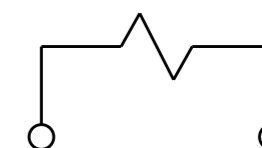
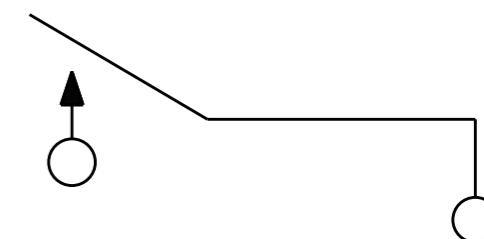
.250x.032
[6.35x0.81] QUICK CONNECT TERM.



.130±.020
[3.3±0.51]



WIRING DIAGRAM
(BOTTOM VIEW)

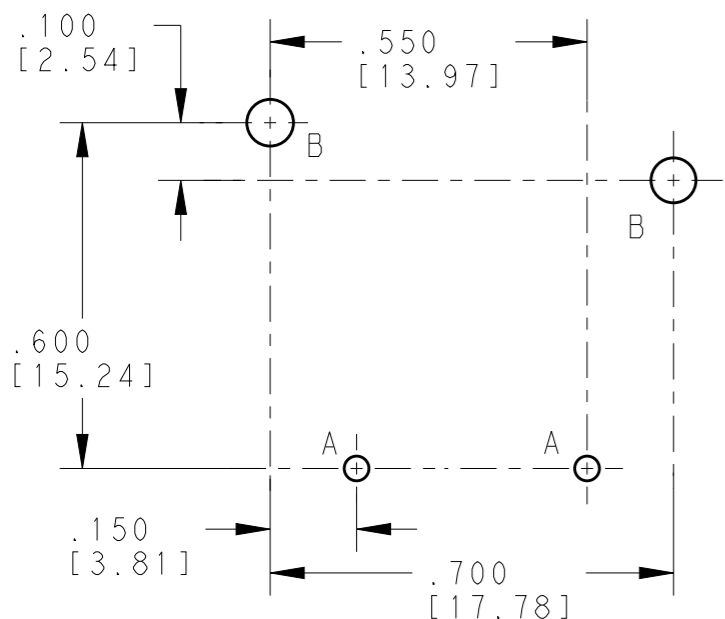


1 FORM A

HOLE CHART

A- Ø .043±.003
[1.09±0.08]

B- Ø .081
[2.06]



PC BOARD LAYOUT
(BOTTOM VIEW)


ELECTRICAL CHARACTERISTICS

NOMINAL VOLTAGE: 24 VDC
 OPERATE VOLTAGE: 18 VDC
 DROPOUT VOLTAGE: 2.4 VDC MIN.
 COIL RESISTANCE: 547 OHMS, ±5%
 CONTACT ARRANGEMENT: 1 FORM A (SPST)
 CONTACT MATERIAL: SILVER CADMIUM OXIDE
 CONTACT RATING: 25A @ 240 VAC, NO CONTACT

BREAKDOWN: 1554V RMS 60Hz ACROSS OPEN CONTACTS
 2500V RMS 60Hz BETWEEN CONTACTS AND COIL
 6KV SURGE USING 1.2 MICROSEC. / 50 MICROSEC. IMPULSE WAVE OR
 .5 MICROSEC. -100KHz RING WAVE BETWEEN CONTACTS AND COIL.

STORAGE TEMPERATURE RANGE: -55°C TO +130°C
 OPERATE TEMPERATURE RANGE: -55°C TO +105°C**

TE PART NO.
3-1423091-5

THIS DRAWING IS A CONTROLLED DOCUMENT.		DWN J. SLIKE 03FEB2010	 TE Connectivity		
DIMENSIONS: INCH [mm]		CHK G. KOPPENHEFFER 03FEB2010			
TOLERANCES UNLESS OTHERWISE SPECIFIED:		APVD G. KOPPENHEFFER 03FEB2010	NAME RELAY, PC, SEALED		
0 PLC ±- 1 PLC ±- 2 PLC ±.01[0.25] 3 PLC ±.005[0.13] 4 PLC ±- ANGLES ±-		PRODUCT SPEC -	RESTRICTED TO -		
MATERIAL -		APPLICATION SPEC -	SIZE A3	CAGE CODE 00779	DRAWING NO. T9AS1H22-24
FINISH -		WEIGHT -	SCALE 2:1		
		Customer Drawing	SHEET 1 OF 1	REV F	