

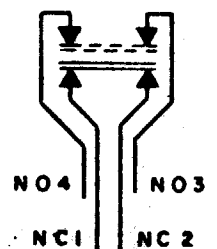
**MICRO SWITCH**

FREERPORT, ILLINOIS, U.S.A.  
A DIVISION OF HONEYWELL

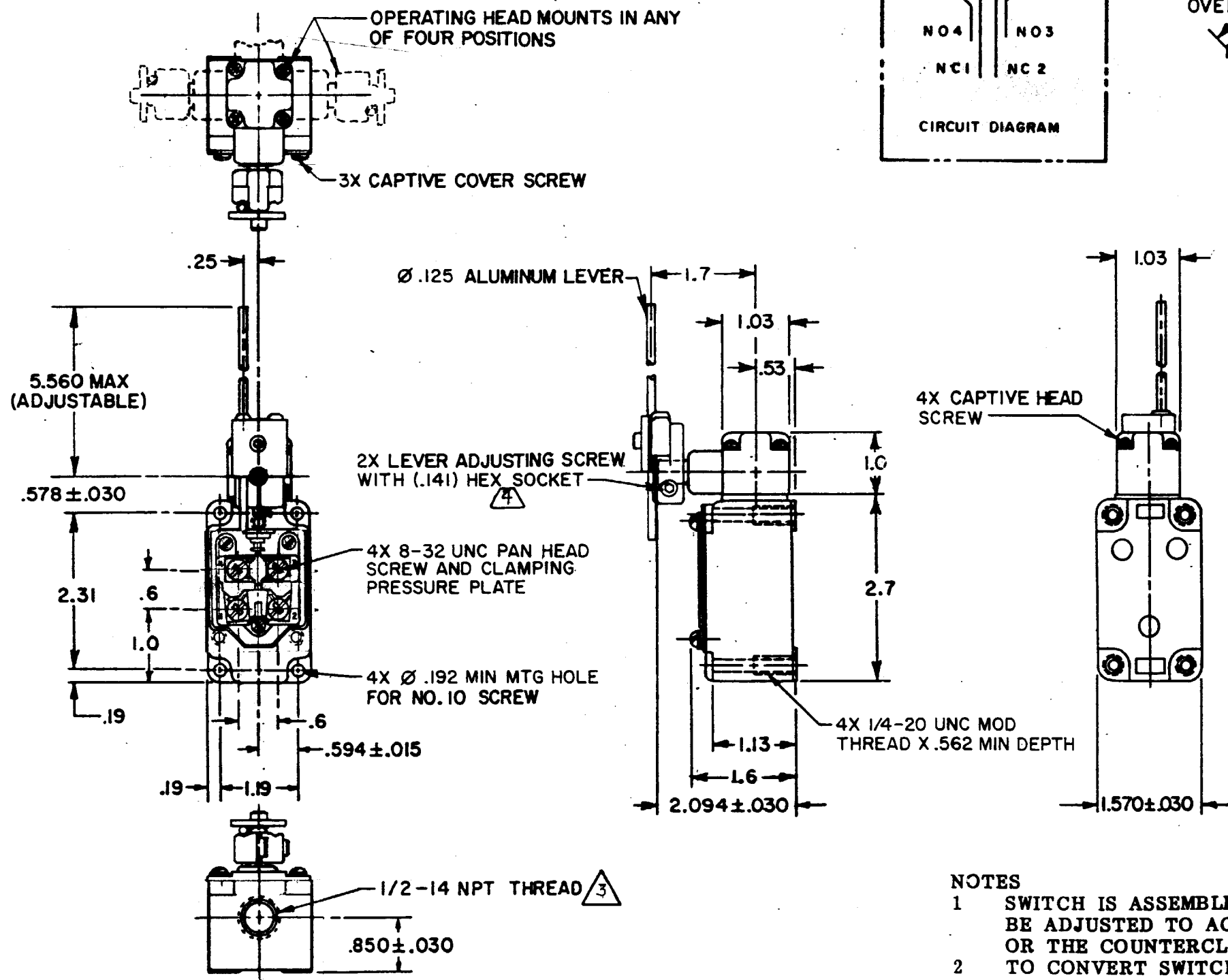
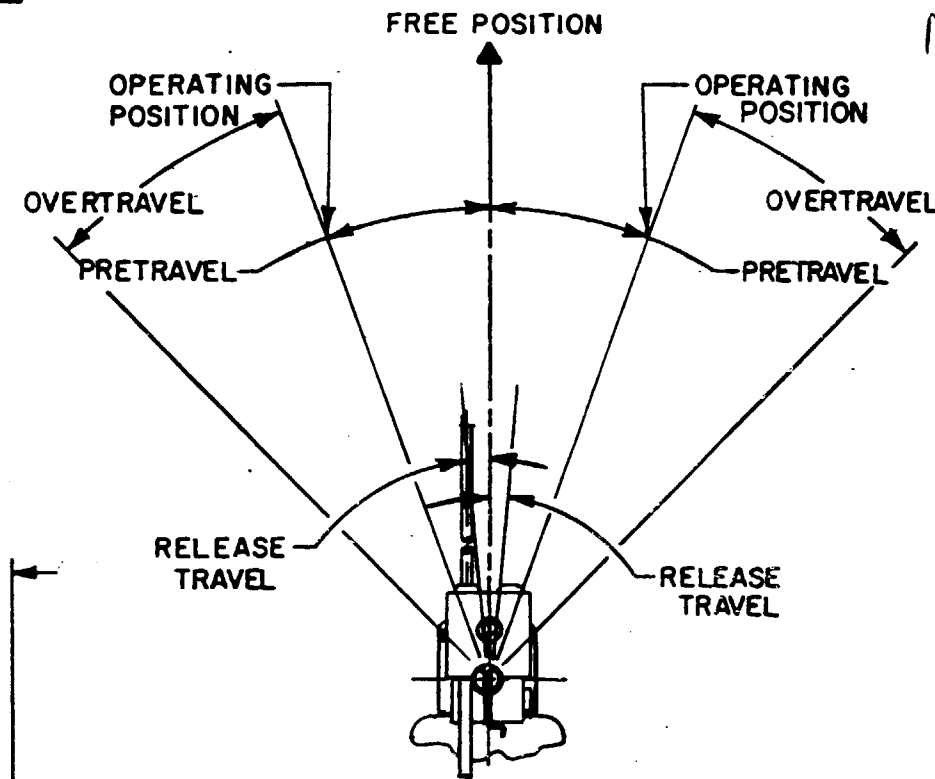
FED. MFG. CODE 91929

**SWITCH-ENCLOSED**

CATALOG LISTING  
**1LS47**



CIRCUIT DIAGRAM



**NOTES**

- SWITCH IS ASSEMBLED FOR ACTUATION IN BOTH DIRECTIONS BUT MAY BE ADJUSTED TO ACTUATE IN EITHER THE CLOCKWISE DIRECTION ONLY OR THE COUNTERCLOCKWISE DIRECTION ONLY
- TO CONVERT SWITCH FOR ACTUATION IN EITHER THE CLOCKWISE OR COUNTERCLOCKWISE DIRECTION ONLY, REMOVE ACTUATOR HEAD AND ROTATE THE NOTCHED PLUNGER 90° TO THE RIGHT FOR CLOCKWISE ACTUATION OR 90° TO THE LEFT FOR COUNTERCLOCKWISE ACTUATION



SEAL TO BE FURNISHED BY USER  
LEVER MAY BE LOCKED IN ANY POSITION THRU 360°  
LEVER FURNISHED UNASSEMBLED IN UNIT PACKING BOX

THIS DRAWING COVERS A PROPRIETARY ITEM AND IS THE PROPERTY OF MICRO SWITCH, A DIVISION OF MINNEAPOLIS-HONEYWELL REGULATOR CO. THIS DRAWING IS NOT TO BE COPIED OR USED WITHOUT THE APPROVAL OF MICRO SWITCH.

CHARACTERISTICS	ELECTRICAL DATA	SCALE 1/2 TO 1
OPERATING TORQUE ----- 1.7 IN-LB MAX	CONTACT ARRANGEMENT (SEE CIRCUIT DIAGRAM)	DO NOT SCALE PRINT
FULL OVERTRAVEL TORQUE ----- 2.4 IN-LB MAX		UNLESS OTHERWISE NOTED
RELEASE TORQUE ----- .35 IN-LB MIN	10A - 120, 240 OR 480 VAC	DIMENSIONS ARE IN INCHES
PRETRAVEL ----- 5° MAX	1/4 HP - 120 VAC; 1/2 HP - 240 VAC	<b>TOLERANCES ARE:</b>
	PILOT DUTY: 600 VAC MAX	ONE PLACE (.01) ±.030
OVERTRAVEL ----- 30° MIN		TWO PLACE (.001) ±.015
RELEASE TRAVEL ----- 0°30' MIN		THREE PLACE (.000) ±.005
SWITCH-BASIC REPLACEMENT ----- 2MN8		ANGLES ±
		WEIGHT

ANSI Y14.5M-1982 APPLIES

1LS47

M

14

REVISIONS

A CO-77031 JDB 22 DEC 93

24 JAN 94

06 JAN 94

FO-92891-A

DRAWN

REPLACES

RELEASE NO.

CHECK

CHECK

CHECK