



TAI-SAW TECHNOLOGY CO., LTD.

No. 3, Industrial 2nd Rd., Ping-Chen Industrial District,
Taoyuan, 324, Taiwan, R.O.C.

TEL: 886-3-4690038 FAX: 886-3-4697532

E-mail: tstsales@mail.taisaw.com Web: www.taisaw.com

Product Specifications Approval Sheet

Product Description: SAW Resonator 1010 MHz SMD 3.8X3.8 mm

TST Part No.: TC0464A

Customer Part No.: _____

Customer signature required
Company: _____
Division: _____
Approved by : _____
Date: _____

Checked by: Justin Wu

Approved by: Francis Chen 

Date: 2012/10/23

1. Customer signed back is required before TST can proceed with sample build and receive orders.
2. Orders received without customer signed back will be regarded as agreement on the specifications.
3. Any specifications changes must be approved upon by both parties and a new revision of specifications shall be released to reflect the changes.



TAI-SAW TECHNOLOGY CO., LTD.

No. 3, Industrial 2nd Rd., Ping-Chen Industrial District,
Taoyuan, 324, Taiwan, R.O.C.

TEL: 886-3-4690038 FAX: 886-3-4697532

E-mail: tstsales@mail.taisaw.com Web: www.taisaw.com

SAW Resonator 1010MHz

MODEL NO.: TC0464A

REV. NO.:2

A. FEATURES:

- 1. 1-Port Resonator.

B. MAXIMUM RATING:

- 1. Input Power Level: 10 dBm
- 2. DC voltage: 3 V
- 3. Operating Temperature: -40°C to +85°C
- 4. Storage Temperature: -40°C to +85°C

C. ELECTRICAL CHARACTERISTICS:

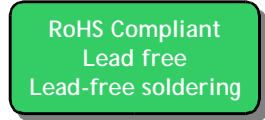
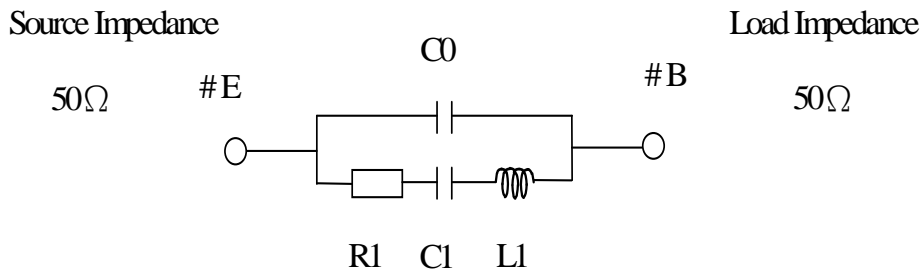
Reference Temperature $T_A=25^\circ\text{C}$

Characteristic	Units	Minimum	Typical	Maximum
Center frequency Fc	MHz	1009.950	1010	1010.050
Insertion Loss IL	dB	-	1.80	2.5
Unload quality factor Q_U		4500	7700	-
Motional capacitance C1	fF	-	1.21	-
Motional inductance L1	μH	-	20.55	-
Motional resistance R1	Ohm	-	16.92	-
Parallel capacitance C_o	pF	-	2.29	-
Frequency Temperature coefficient (TC _f)	ppm/c*2	-	-0.032	-
Turnover To	deg.C	10	-	40
Package size	SMD 3.8X3.8X1.4 mm			

Temperature dependence of fc: $fc(T_A)=fc(T_0)(1-TC_f(T_A-T_0)^2)$

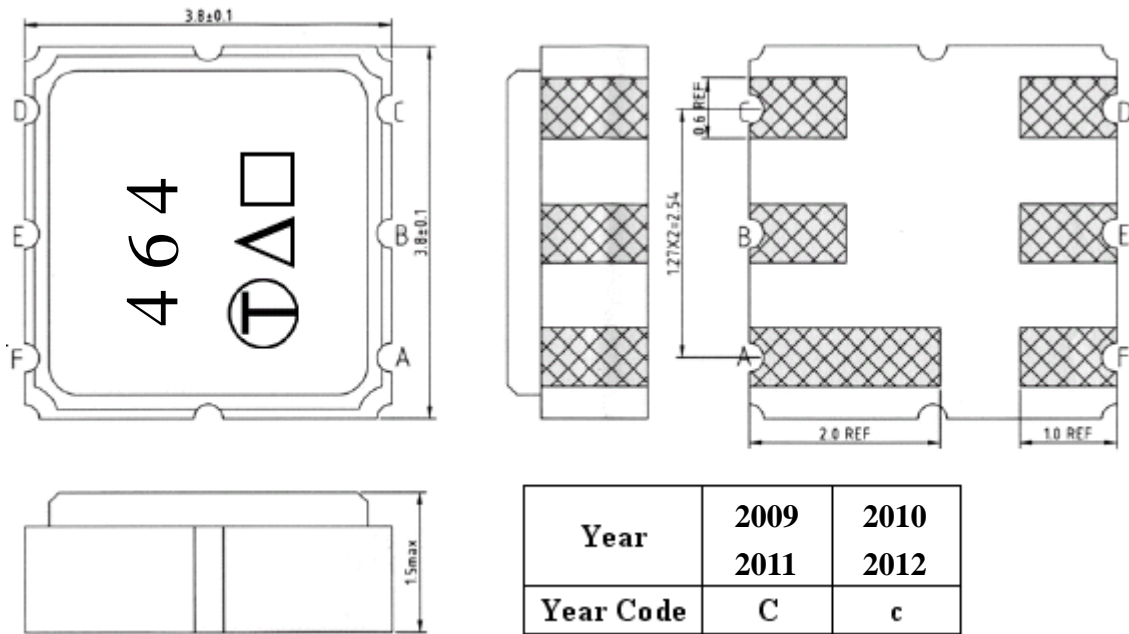
D. EQUIVRENT CIRCUIT:

One-Port Resonator:



Electrostatic Sensitive Device (ESD)

E. OUTLINE DRAWING:



#E : Input or Output

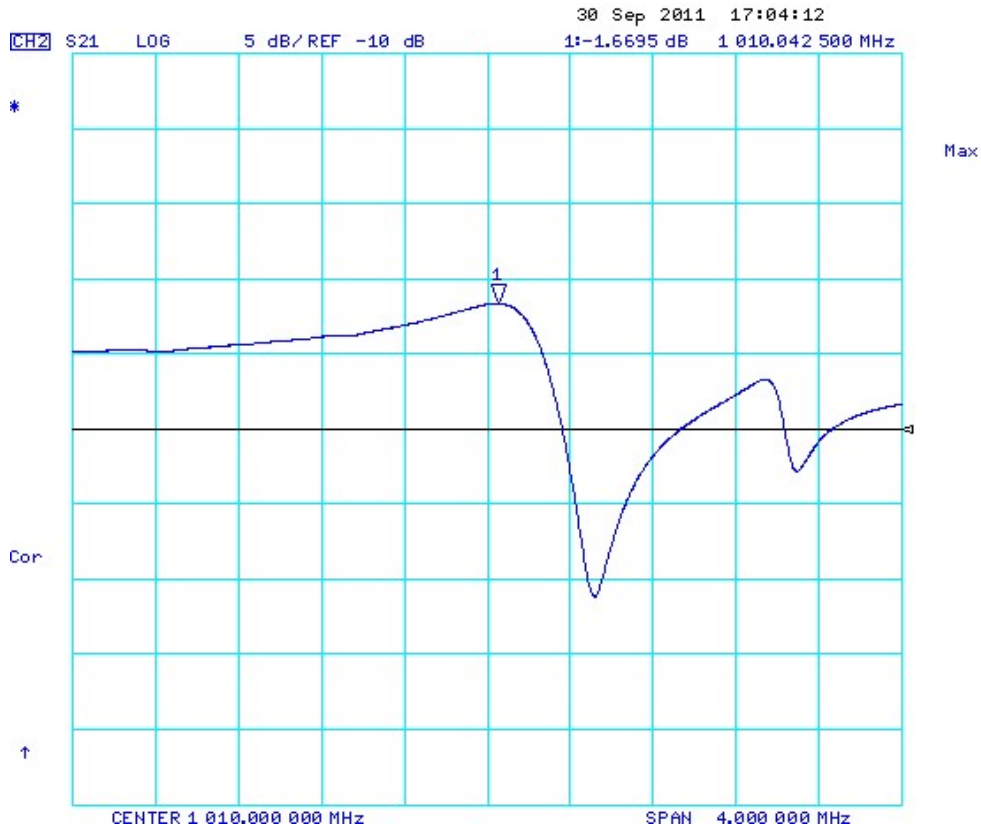
#B : Output or Input

#A、C、D、F : Ground

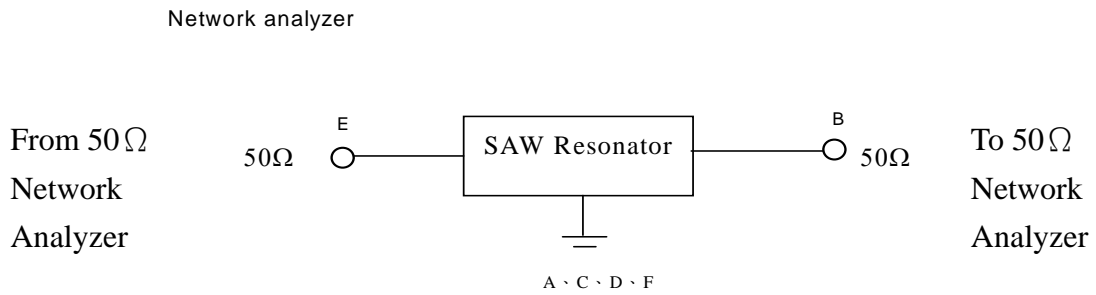
Δ : Year Code

□ : Data Code(Follow the table provided by planer each year)

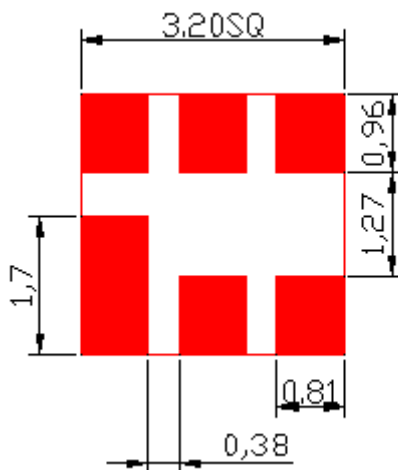
F. FREQUENCY CHARACTERISTICS:



G. TEST CIRCUIT:



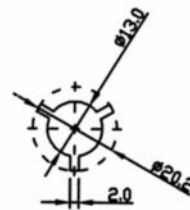
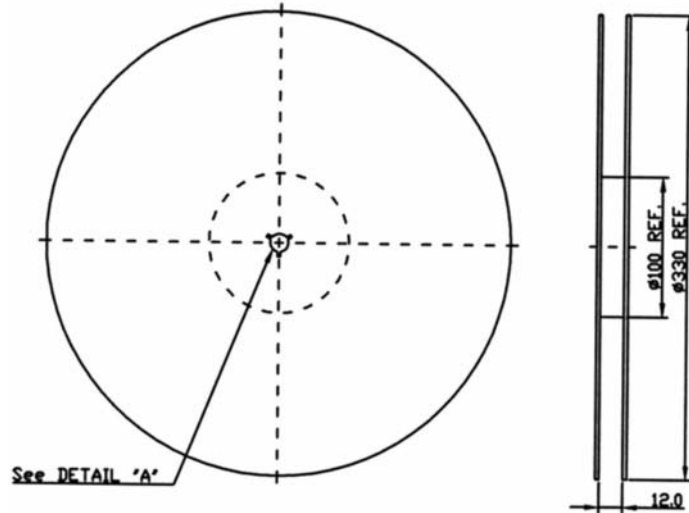
H. PCB FOOTPRINT:



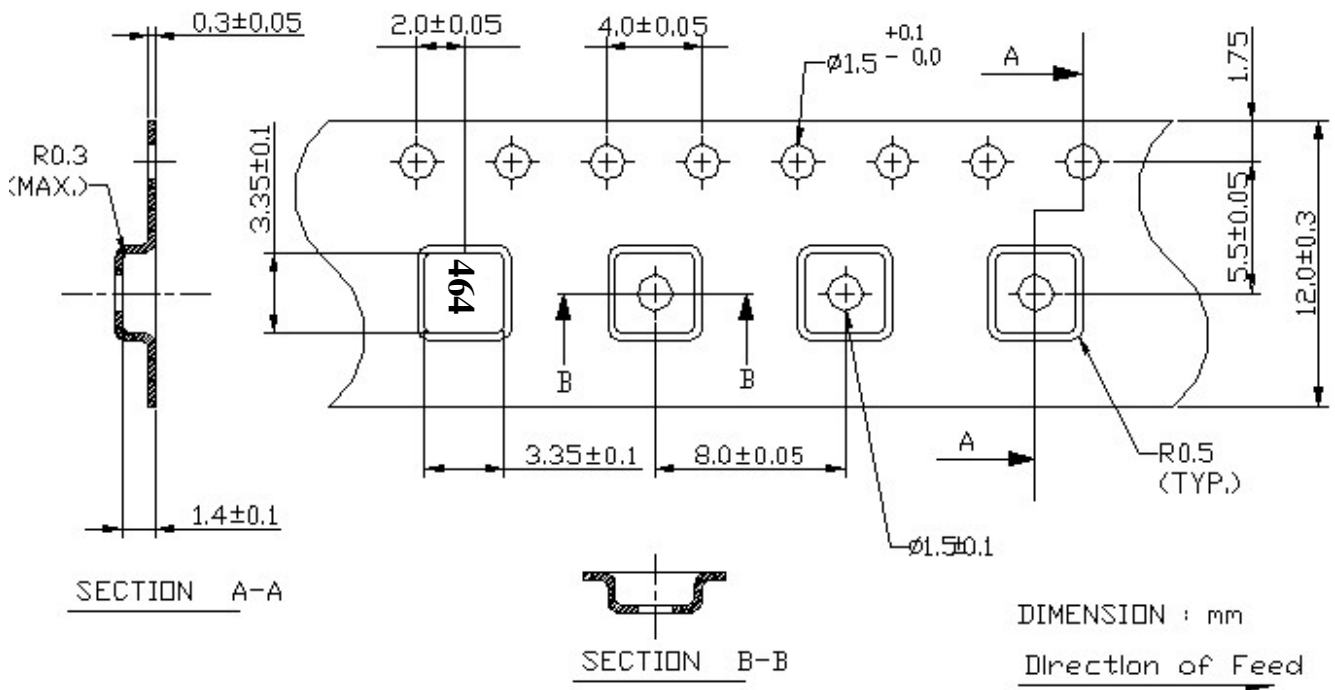
G. PACKING:

1. REEL DIMENSION

(Please refer to FR-75D10 for packing quantity)



2. TAPE DIMENSION



J. RECOMMENDED REFLOW PROFILE:

