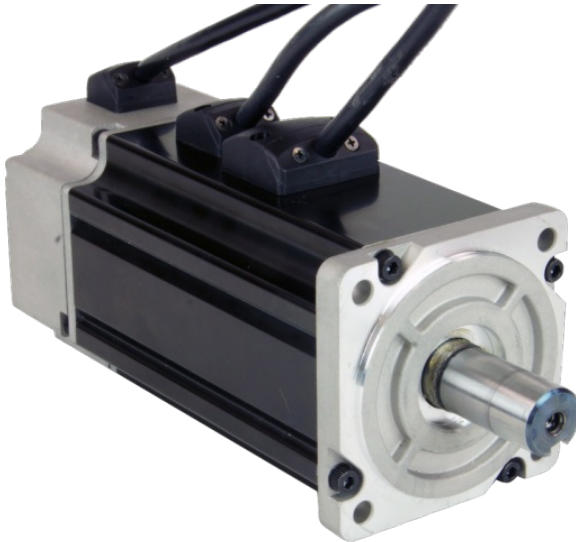


J0750-352-5-000

80mm Servo Motor, 750W, with Brake

1pc. - 710.00
50pc. - 532.50



Product Features

- *High torque density*
- *Low rotor inertia*
- *Compact size*
- *High-resolution, incremental encoders (2500 lines, 10000 counts)*
- *Brake*
- *IP65 rated for harsh environments*



Description




High performance brushless AC servo motor with brake.
Standard configuration includes high-resolution, incremental encoder feedback.
This motor is UL Recognized in the US and Canada, file no. E472271.

Please note that a VL series gearhead purchased for this motor will require a special mounting adaptor and 2 weeks lead time. Please contact customer service for the price of this adaptor.

Specifications

Part Number:	J0750-352-5-000
Frame Size:	80 mm
Continuous Torque:	21.24 in-lb
Peak Torque:	61.95 in-lb
Rated Power:	750 watts
Rated Voltage:	220 AC volts
Rated Speed:	3000 rpm
Peak Speed:	5500 rpm
Rated Current:	4.5 A rms
Peak Current:	13.5 A rms
Torque Constant:	4.69 in-lb/A
Voltage Constant:	55.5 V/krpm
Armature Resistance:	1.5 Line-to-Line ohms
Armature Inductance:	8.0 Line-to-Line mH
Motor Length:	7.04 inch
Rotor Inertia:	0.01373 oz-in-sec ²
Weight:	7.6 lbs
Integral Holding Brake:	Yes
Storage Temperature:	-20 to 80 °C
Operating Temperature:	0 to 40 °C
Insulation Class:	Class B (130 °C)
Maximum Radial Load:	60 lbs
Maximum Thrust Load:	20 lbs
Perpendicularity:	0.0015 inches
Concentricity:	0.0015 inches

Downloads

Datasheet:	http://s3.amazonaws.com/applied-motion-pdf/J0750-352-5-000.pdf
2D Drawing:	 J0750-352-5-000_RevD.pdf
3D Drawing:	 J0750-352-5-000A.igs
Speed-Torque Curves:	 speed torque J0750-302-5-000 bluac5.pdf

Pricing

	J0750-352-5-000 Part No. J0750-352-5-000
1pc.	\$710.00
25pc.	\$610.60
50pc.	\$532.50
100pc.	Request a Quote for 100+ piece pricing.

Products in the Series J Series Servo Motors

Number	Frame Size	Continuous Torque	Peak Torque	Motor Length	Rated Power	Rotor Inertia	1pc./50pc.
301-3-000	40 mm	2.8	8.1	4.33	100	0.00059	\$296.00 / \$222.00
303-3-000	40 mm	2.83	8.5	4.33	100	0.00059	\$338.00 / \$253.50
351-3-000	40 mm	2.83	8.14	5.82	100	0.00073	\$464.00 / \$348.00
353-3-000	40 mm	2.83	8.5	5.82	100	0.00066	\$464.00 / \$348.00
301-4-000	60 mm	5.66	15	4.17	200	0.00133	\$354.00 / \$265.50
302-4-000	60 mm	5.66	15.04	4.17	200	0.00133	\$354.00 / \$265.50
304-4-000	60 mm	5.66	15	4.17	200	0.00133	\$354.00 / \$265.50
351-4-000	60 mm	5.66	15	5.45	200	0.00133	\$505.00 / \$378.75
352-4-000	60 mm	5.66	15.04	5.45	200	0.00133	\$505.00 / \$378.75
354-4-000	60 mm	5.66	15	5.45	200	0.00134	\$505.00 / \$378.75
301-4-000	60 mm	11.23	30.95	4.68	400	0.00269	\$411.00 / \$308.25
302-4-000	60 mm	11.24	30.97	4.68	400	0.00269	\$411.00 / \$308.25
305-4-000	60 mm	11.24	30.97	4.68	400	0.00269	\$411.00 / \$308.25
351-4-000	60 mm	11.24	30.95	6.24	400	0.00211	\$555.00 / \$416.25
352-4-000	60 mm	11.24	30.97	6.24	400	.00211	\$555.00 / \$416.25
355-4-000	60 mm	11.24	30.97	6.24	400	0.00269	\$555.00 / \$416.25
302-5-000	80 mm	21.24	61.95	5.19	750	0.01316	\$495.00 / \$371.25
352-5-000	80 mm	21.24	61.95	7.04	750	0.01373	\$710.00 / \$532.50