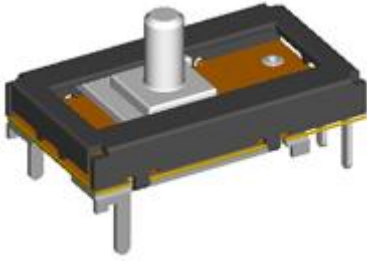


Model(型號): **S09K11H01**

► Download PDF file



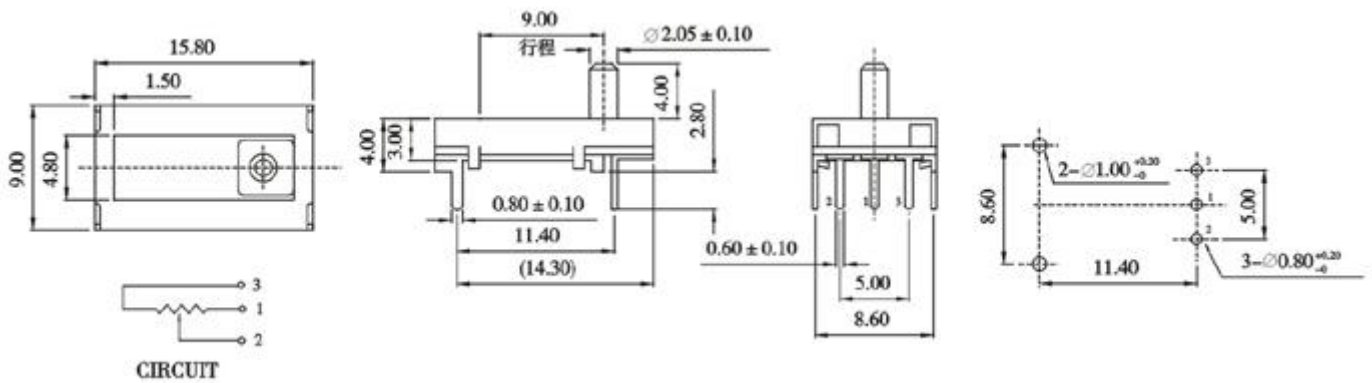
Features:(特點):

High-precision linearity is attained by high-precision printing technology.
Space-save design,contributing to reduction in the size and weight of sets.
Reduced torque load at the time of driving the motor provides a light operating force.
Operating temperatures as high as 105° c supported.(type B)

Applications(作用):

For feedback detections of various types of motor drive units.
For detection of all size.
Detecting the angle of a vehicle headlight.(type B).

Dimensions(規格圖):



Specifications(規格)

Electrical Characteristics [電氣性能]

Total resistance [全阻抗值]	1KΩ ~ 1MΩ
Total resistance tolerance [全阻抗值容許差]	±30%
Ratings power(w) [額定功率]	5V DC
Resistance taper [阻抗變化特性]	B
Residual resistance [殘留阻值]	全阻值3%Ω Max.
Sliding noise [滑動雜音]	300mV Max
Insulation resistance [絕緣阻抗]	100MΩ Min. at DC 250V
Withstanding voltage [耐電壓]	1 minute at AC 250V
Max. operating voltage [最高使用電壓]	AC 50V

Mechanical Characteristics [機械性能]

Operation torque [回轉力矩]	10~80gf.cm
Rotation stopper strength [止動強度]	3Kgf.cm Min
Switch Travel [開關移動量]	9±0.5 mm

Endurance Characteristics [耐久性能]

Rotational life [回轉壽命]	More than 100,000 cycles
--------------------------	--------------------------