



UTM6006

Power MOSFET

6.3A, 60V N-CHANNEL FAST SWITCHING MOSFET

■ DESCRIPTION

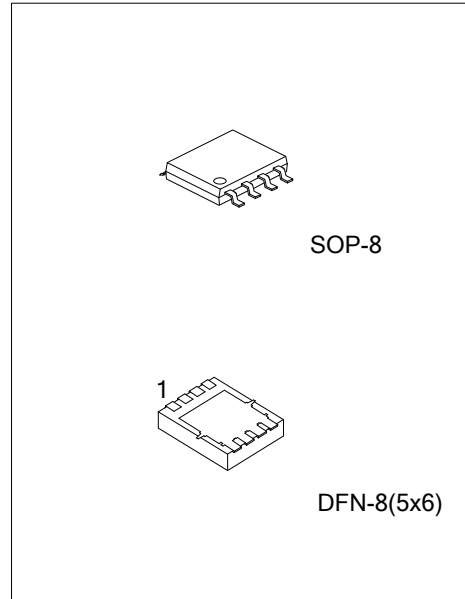
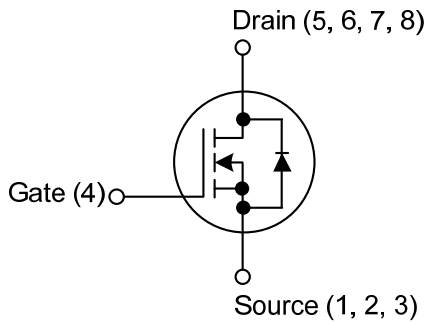
The UTC **UTM6006** is an N-Channel MOSFET, it uses UTC's advanced technology to provide customers with a minimum on-state resistance, high switching speed and low gate charge.

The UTC **UTM6006** is suitable for application in networking DC-DC power system and LCD/LED back light, etc.

■ FEATURES

- * $R_{DS(ON)} < 18\text{ m}\Omega$ @ $V_{GS}=10\text{V}$, $I_D=6\text{A}$
- $R_{DS(ON)} < 20\text{ m}\Omega$ @ $V_{GS}=4.5\text{V}$, $I_D=4\text{A}$
- * Low gate charge
- * Excellent CdV/dt effect decline
- * High switching speed

■ SYMBOL



■ ORDERING INFORMATION

Ordering Number	Package	Pin Assignment								Packing
		1	2	3	4	5	6	7	8	
UTM6006G-S08-R	SOP-8	S	S	S	G	D	D	D	D	Tape Reel
UTM6006G-K08-5060-R	DFN-8(5x6)	S	S	S	G	D	D	D	D	Tape Reel

Note: Pin Assignment: G: Gate D: Drain S: Source

<p>UTM6006G-S08-R</p> <ul style="list-style-type: none"> (1) Packing Type (2) Package Type (3) Green Package 	<ul style="list-style-type: none"> (1) R: Tape Reel (2) S08: SOP-8, K08-5060: DFN-8(5x6) (3) G: Halogen Free and Lead Free
---	---

■ MARKING

SOP-8	DFN-8(5x6)

■ ABSOLUTE MAXIMUM RATINGS

PARAMETER		SYMBOL	RATINGS	UNIT	
Drain-Source Voltage		V_{DSS}	60	V	
Gate-Source Voltage		V_{GSS}	±20	V	
Drain Current	Continuous V_{GS} @ 10V (Note 1)	I_D	$T_A=25^{\circ}C$	6.3	A
			$T_A=70^{\circ}C$	5.0	A
	Pulsed (Note 2)		I_{DM}	32	A
Avalanche Current		I_{AS}	28	A	
Single Pulse Avalanche Energy (Note 3)		E_{AS}	67	mJ	
Power Dissipation ($T_A=25^{\circ}C$) (Note 4)	SOP-8	P_D	1.5	W	
	DFN-8(5×6)		1.92		
Junction Temperature		T_J	-55~+150	°C	
Storage Temperature Range		T_{STG}	-55~+150	°C	

Note: Absolute maximum ratings are those values beyond which the device could be permanently damaged.

Absolute maximum ratings are stress ratings only and functional device operation is not implied.

■ THERMAL CHARACTERISTICS (Note 1)

PARAMETER		SYMBOL	RATINGS	UNIT
Junction to Ambient	SOP-8	θ_{JA}	85	°C/W
	DFN-8(5×6)		65	
Junction to Case	SOP-8	θ_{JC}	24	°C/W
	DFN-8(5×6)		12	

Notes: 1. The data tested by surface mounted on a 1 inch² FR-4 board with 2OZ copper.

2. The data tested by pulsed, pulse width ≤ 300μs, duty cycle ≤ 2%.

3. The EAS data shows Max. rating. The test condition is $V_{DD}=25V$, $V_{GS}=10V$, $L=0.1mH$, $I_{AS}=30A$.

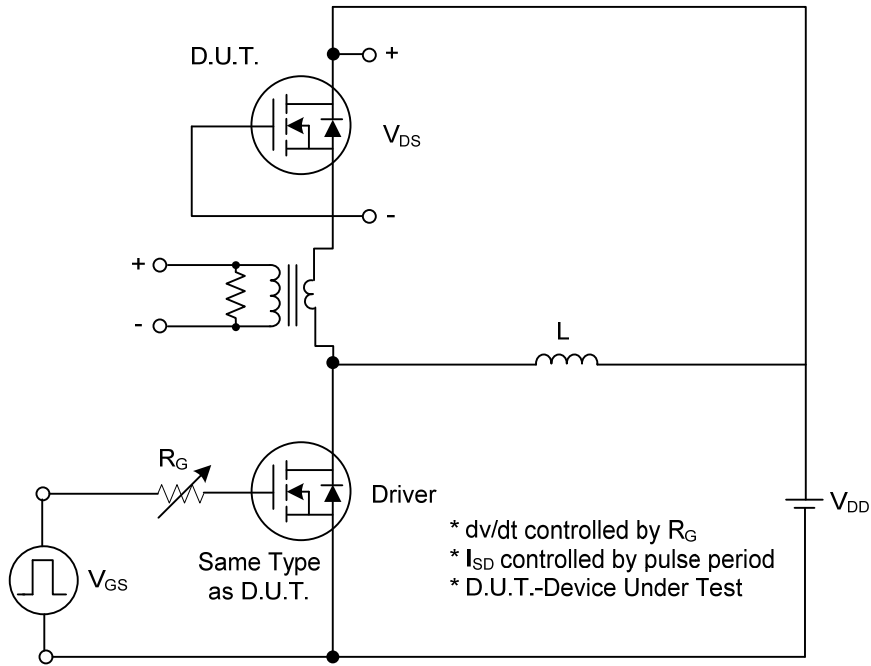
4. The power dissipation is limited by 150°C junction temperature.

■ ELECTRICAL CHARACTERISTICS (T_J=25°C, unless otherwise noted)

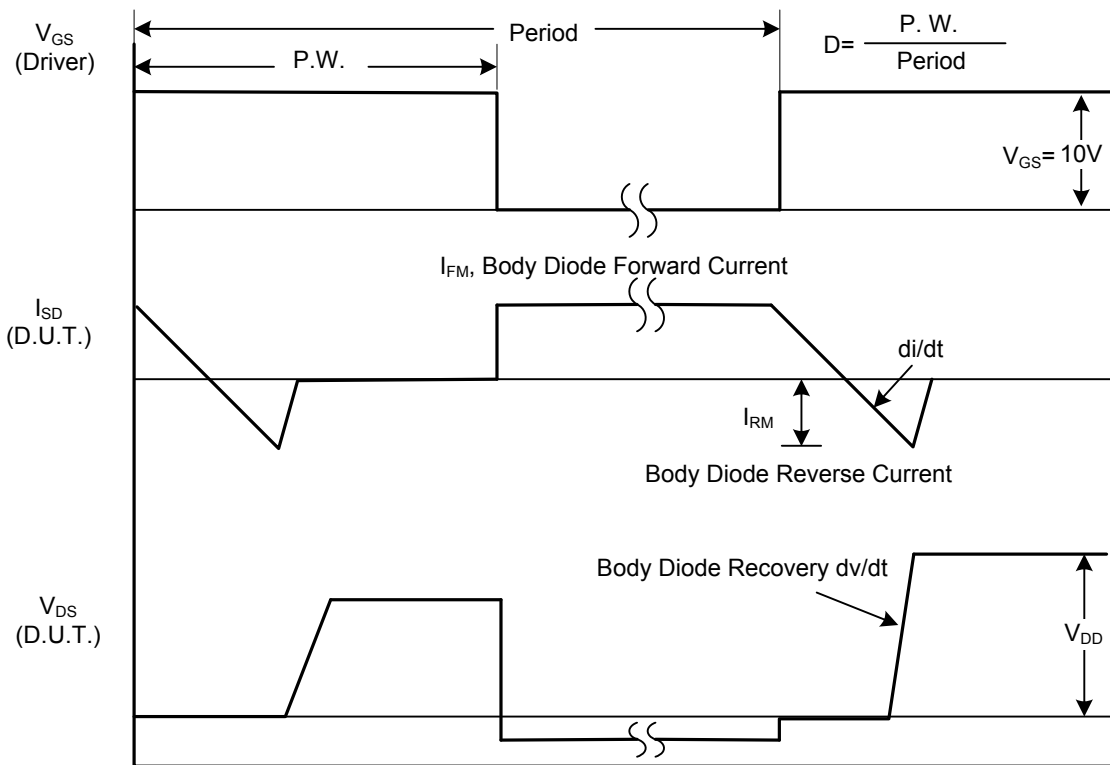
PARAMETER		SYMBOL	TEST CONDITIONS	MIN	TYP	MAX	UNIT
OFF CHARACTERISTICS							
Drain-Source Breakdown Voltage		BV _{DSS}	I _D =250μA, V _{GS} =0V	60			V
BV _{DSS} Temperature Coefficient		ΔBV _{DSS} /ΔT _J	Reference to 25°C, I _D =1mA		0.057		V/°C
Drain-Source Leakage Current		I _{DSS}	V _{DS} =48V, V _{GS} =0V, T _J =25°C			1	μA
			V _{DS} =48V, V _{GS} =0V, T _J =55°C			5	μA
Gate-Source Leakage Current	Forward	I _{GSS}	V _{GS} =+20V, V _{DS} =0V			+100	nA
	Reverse		V _{GS} =-20V, V _{DS} =0V			-100	nA
ON CHARACTERISTICS							
Gate Threshold Voltage		V _{GS(TH)}	V _{DS} =V _{GS} , I _D =250μA	1.2		2.5	V
V _{GS(TH)} Temperature Coefficient		ΔV _{GS(TH)}			-5.68		
Static Drain-Source On-State Resistance (Note 2)		R _{DSON}	V _{GS} =10V, I _D =6A		14	18	mΩ
			V _{GS} =4.5V, I _D =4A		16	20	mΩ
Forward Transconductance		g _{FS}	V _{DS} =5V, I _D =6A		40		S
DYNAMIC PARAMETERS							
Input Capacitance		C _{ISS}	V _{GS} =0V, V _{DS} =25V, f=1.0MHz		1070	1200	pF
Output Capacitance		C _{OSS}			200	220	pF
Reverse Transfer Capacitance		C _{RSS}			190	210	pF
SWITCHING PARAMETERS (Note 2)							
Total Gate Charge (4.5V)		Q _G	V _{GS} =10V, V _{DS} =48V, I _D =1A		290	310	nC
Gate to Source Charge		Q _{GS}			10.7	15	nC
Gate to Drain Charge		Q _{GD}			30	45	nC
Turn-ON Delay Time		t _{D(ON)}	V _{GS} =10V, V _{DD} =30V, R _G =3.3Ω, I _D =2A		55	70	ns
Rise Time		t _R			100	120	ns
Turn-OFF Delay Time		t _{D(OFF)}			580	620	ns
Fall-Time		t _F			190	210	ns
GUARANTEED AVALANCHE CHARACTERISTICS							
Single Pulse Avalanche Energy (Note 5)		E _{AS}	V _{DD} =25V, L=0.1mH, I _{AS} =15A	19			mJ
DIODE CHARACTERISTICS							
Continuous Source Current (Note 1, 6)		I _S	V _G =V _D =0V, Force Current			6.3	A
Pulsed Source Current (Note 2, 6)		I _{SM}				32	A
Diode Forward Voltage (Note 2)		V _{SD}	V _{GS} =0V, I _S =6.3A, T _J =25°C			1	V
Reverse Recovery Time		t _{rr}	I _F =6A, di/dt=100A/μs, T _J =25°C			15	nS
Reverse Recovery Charge		Q _{rr}				10.4	nC

- Notes: 1. The data tested by surface mounted on a 1 inch² FR-4 board with 2OZ copper.
 2. The data tested by pulsed, pulse width≤300μs, duty cycle≤2%.
 3. The EAS data shows Max. rating. The test condition is V_{DD}=25V, V_{GS}=10V, L=0.1mH, I_{AS}=30A.
 4. The power dissipation is limited by 150°C junction temperature.
 5. The Min. value is 100% EAS tested guarantee.
 6. The data is theoretically the same as I_D and I_{DM}, in real applications, should be limited by total power dissipation.

■ TEST CIRCUITS AND WAVEFORMS

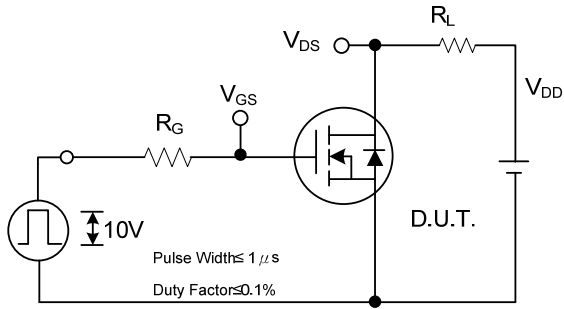


Peak Diode Recovery dv/dt Test Circuit

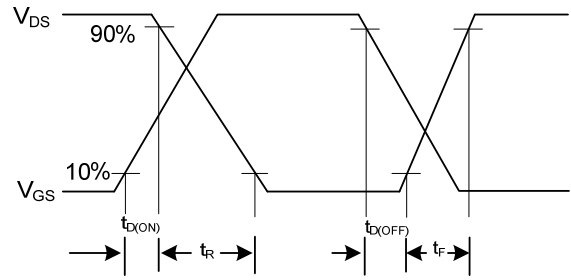


Peak Diode Recovery dv/dt Waveforms

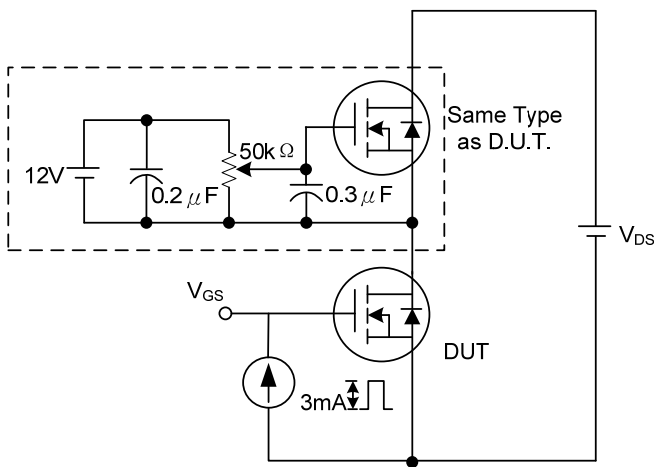
■ TEST CIRCUITS AND WAVEFORMS (Cont.)



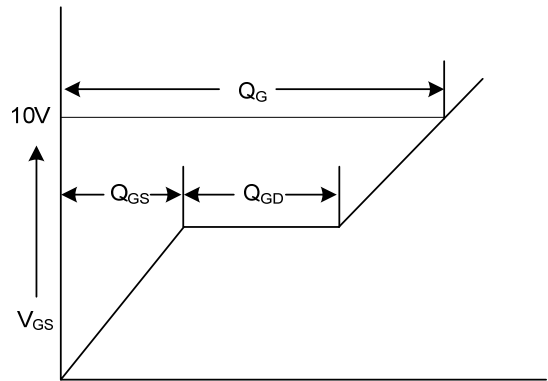
Switching Test Circuit



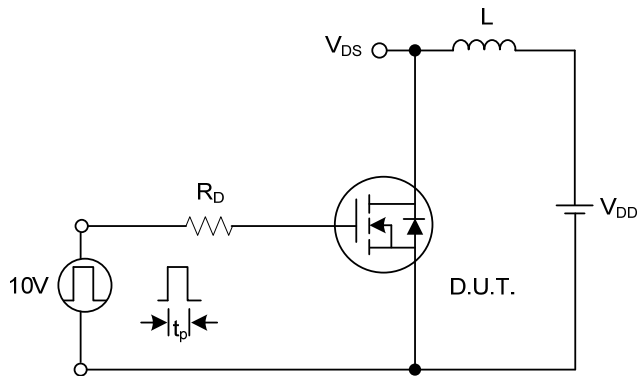
Switching Waveforms



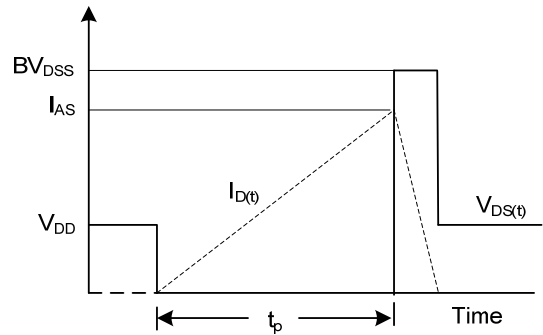
Gate Charge Test Circuit



Gate Charge Waveform

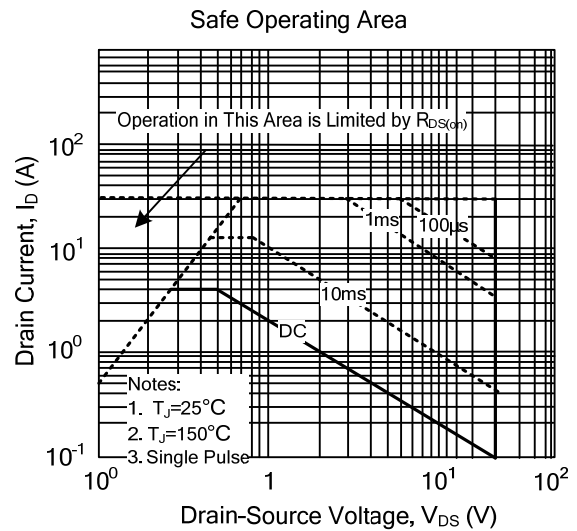
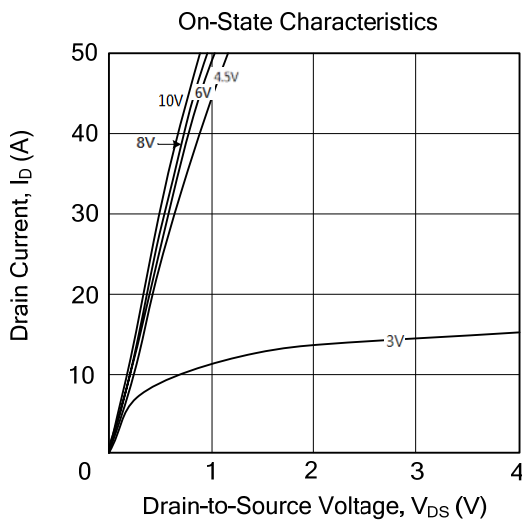
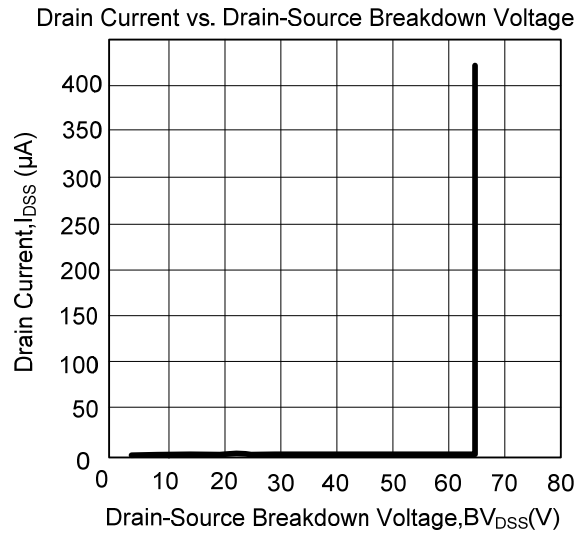
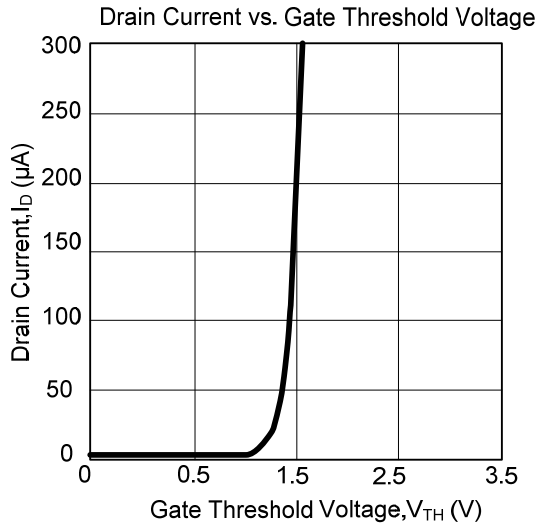
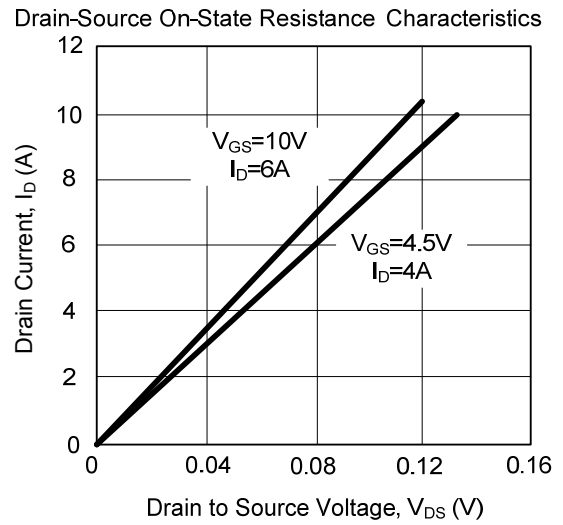
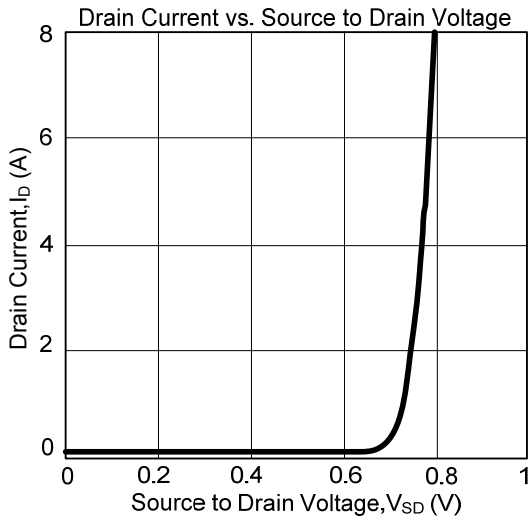


Unclamped Inductive Switching Test Circuit

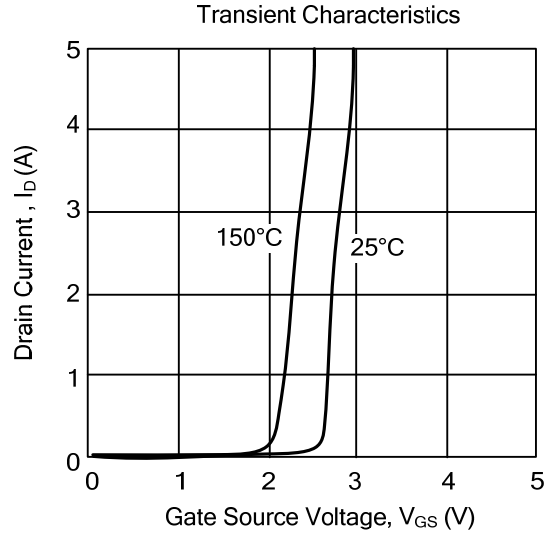
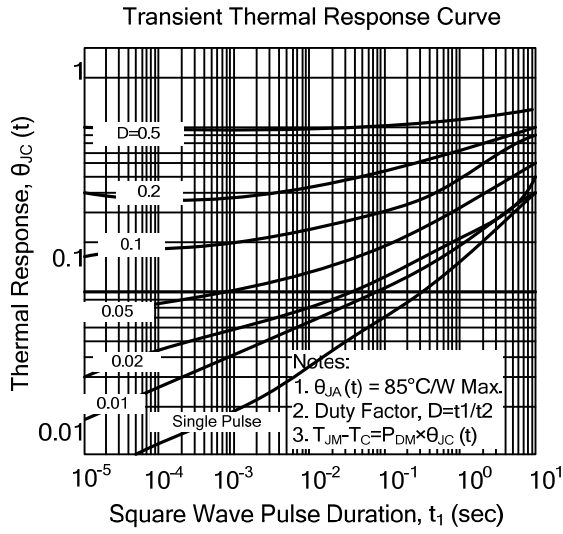


Unclamped Inductive Switching Waveforms

TYPICAL CHARACTERISTICS



■ TYPICAL CHARACTERISTICS (Cont.)



UTC assumes no responsibility for equipment failures that result from using products at values that exceed, even momentarily, rated values (such as maximum ratings, operating condition ranges, or other parameters) listed in products specifications of any and all UTC products described or contained herein. UTC products are not designed for use in life support appliances, devices or systems where malfunction of these products can be reasonably expected to result in personal injury. Reproduction in whole or in part is prohibited without the prior written consent of the copyright owner. The information presented in this document does not form part of any quotation or contract, is believed to be accurate and reliable and may be changed without notice.