



# CSS1050G Series SMD WIRE WOUND POWER INDUCTORS (SHIELDED)

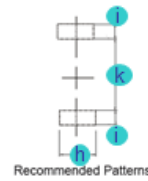
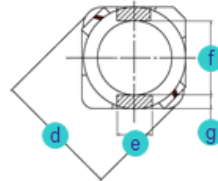
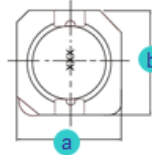
Rev. B

## A. Electrical Specifications:

P/N	Marking	Inductance (μH)	Test Freq. (KHz)	DCR Max. (mΩ)	Rated Current (A)	I sat (A)
CSS1050G-R80N	R80	0.80	100	4.3	9.50	13.5
CSS1050G-1R5N	1R5	1.50	100	5.8	8.30	10.5
CSS1050G-2R2N	2R2	2.20	100	7.2	7.50	9.25
CSS1050G-3R3N	3R3	3.30	100	10.4	6.50	7.80
CSS1050G-4R7N	4R7	4.70	100	12.3	6.10	6.40
CSS1050G-6R8N	6R8	6.80	100	18.0	5.40	5.40
CSS1050G-8R2N	8R2	8.20	100	20.0	5.00	4.85
CSS1050G-100N	100	10.0	100	26.0	4.50	4.45
CSS1050G-120N	120	12.0	100	33.0	3.80	4.00
CSS1050G-150N	150	15.0	100	41.0	3.40	3.60
CSS1050G-180N	180	18.0	100	46.0	3.10	3.20
CSS1050G-220N	220	22.0	100	61.0	2.90	2.95
CSS1050G-270N	270	27.0	100	69.0	2.60	2.70
CSS1050G-330N	330	33.0	100	84.0	2.50	2.40
CSS1050G-390N	390	39.0	100	106.0	2.25	2.30
CSS1050G-470N	470	47.0	100	130.0	2.00	2.00
CSS1050G-560N	560	56.0	100	149.0	1.90	1.90
CSS1050G-680N	680	68.0	100	201.0	1.60	1.65
CSS1050G-820N	820	82.0	100	227.0	1.45	1.50
CSS1050G-101N	101	100	100	253.0	1.35	1.35
CSS1050G-121N	121	120	100	303.0	1.18	1.28
CSS1050G-151N	151	150	100	370.0	1.10	1.12
CSS1050G-181N	181	180	100	419.0	1.00	1.04
CSS1050G-221N	221	220	100	500.0	0.94	0.94
CSS1050G-271N	271	270	100	672.0	0.80	0.84
CSS1050G-331N	331	330	100	812.0	0.73	0.75
CSS1050G-391N	391	390	100	953.0	0.70	0.70
CSS1050G-471N	471	470	100	1289	0.54	0.60
CSS1050G-561N	561	560	100	1430	0.52	0.54
CSS1050G-681N	681	680	100	1599	0.51	0.52
CSS1050G-821N	821	820	100	1768	0.48	0.50
CSS1050G-102N	102	1000	100	1989	0.42	0.48

## B. Dimensions: mm (Inch)

Series	a	b	c	d	e	f	g	h	i	k
CSS1050G	10.3 (0.406)	10.5 (0.413)	5.1 (0.201)	13.5 (0.531)	3.0 (0.118)	7.7 (0.303)	1.2 (0.047)	3.2 (0.126)	1.6 (0.063)	7.3 (0.287)
Tol.	Max.	Max.	Max.	Max.	Typ.	Typ.	Typ.	Typ.	Typ.	Typ.



## C. General Information:

1. CSS1050G-xxx\_, "CSS1050G" = P/N, "xxx" = Inductance, "\_" = Tolerance.
2. Tolerance "\_": N = ±30%, M = ±20%.
3. Operating temperature range: -30°C to +100°C (Including self-heating).
4. Storage temperature: -40°C to +85°C.
5. Inductance measured using the HP4284A and Chroma 1320 & 3302.
6. DCR measured using Chroma 16502 milliohm meter.
7. Inductance drop no more than 35% of initial value at Isat, temperature rise Δt < 40°C at rated current.
8. Inductance and Current range: From 0.80μH (9.50A) to 1000.0 μH (0.42A).
9. MSL: Level 1



# CSS1050G Series SMD WIRE WOUND POWER INDUCTORS (SHIELDED)

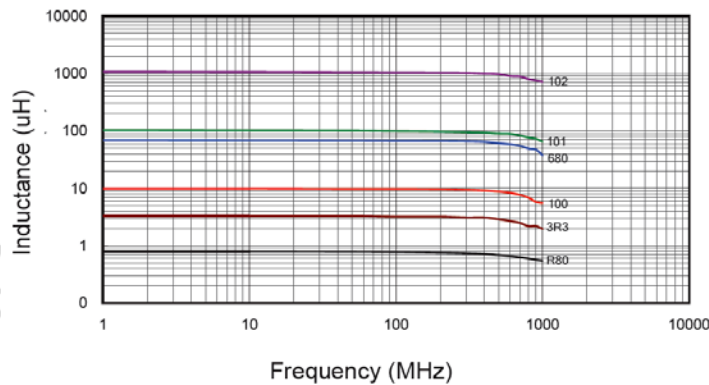
Rev. B

## D. Applications:

1. Game Consoles
2. Set Top Boxes
3. Cables Modems
4. Computers
5. Mobile Communication Devices (Cell Phones, Radios, etc.)
6. PDA, LCD, DVD, BRP, HD.

## E. Characteristics Curve:

Inductance vs. Frequency



Inductance vs. DC Current

