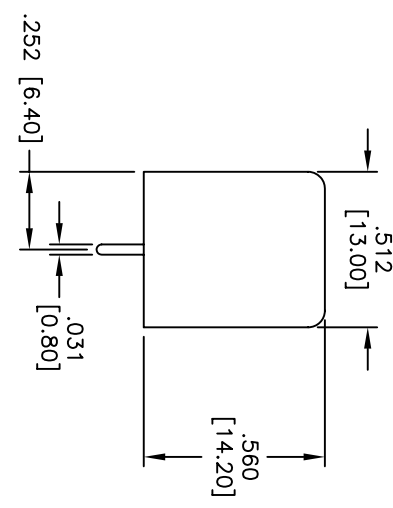
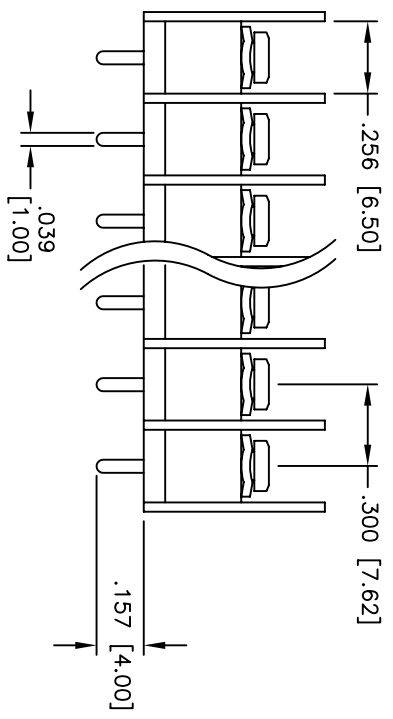
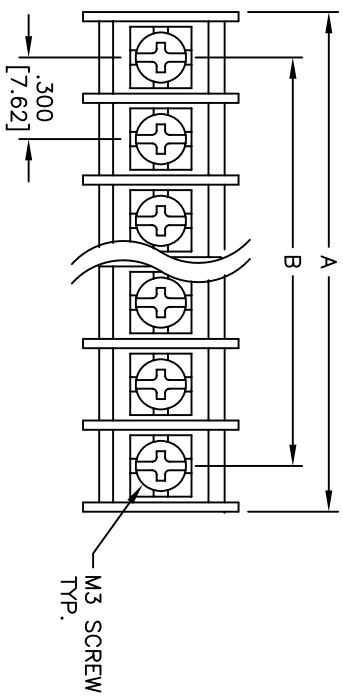


APPROVED: _____
 DATE: _____ TITLE: _____

Rev	AWO #	Description	Date	Appr
-		RELEASED	9/26/07	
A		UPDATED WIRE RANGE	10/2/07	



Positions: 2 thru 32
 A = .300 [7.62] x No. of Poles .067 [1.70]
 B = .300 [7.62] x No. of Poles -1

SPECIFICATIONS:
 Material:
 Insulator: PA66, rated UL 94V-0
 Insulator color: Black
 Plating:
 Contacts: Brass, Tin plated
 Screws: Steel, Nickel plated
 Hardware: Brass, Tin plated
 Electrical:
 Operating voltage: 300 VAC max.
 Current rating: 10 Amps max.
 Contact resistance: 20 mohms max. initial
 Insulation resistance: 500 Mohms min.
 Dielectric withstanding voltage: 2,000 VAC for 1 minute
 Mechanical:
 Wire range: 12-22 AWG
 Screw Torque: 10kg/cm Max.
 Temperature Rating:
 Operating temperature: -40°C to +105°C
 Environmental:
 Lead free, RoHS compliant
 Recommended soldering temp: 235°C for 5 seconds

UNLESS OTHERWISE SPECIFIED ALL DIMENSIONS ARE INCHES [MM]	
TOLERANCES: EXCEPT AS NOTED	
INCHES	HOLDS
.X ± .10	ØX ± .10
.XX ± .020	ØXXX ± .015
.XXX ± .015	ØXXX ± .010
APPROVALS	DATE
DRAWN	SS
CHECKED	
APPROVED	

ADAM TECH
 909 Rahway Avenue, Union, NJ 07083
 Phone: 908-687-5000 Fax: 908-687-5710
 TITLE: .300 [7.62] CENTERLINE BARRIER BLOCK
 VERTICAL, PCB TAILS, BARRIER ENDS
 SIZE: X
 PART NO.: TBP-XX-01-B
 SCALE: NTS
 SHEET 1 OF 1

6 5 4 3 2 1



6	5	4	3	2	1
---	---	---	---	---	---