



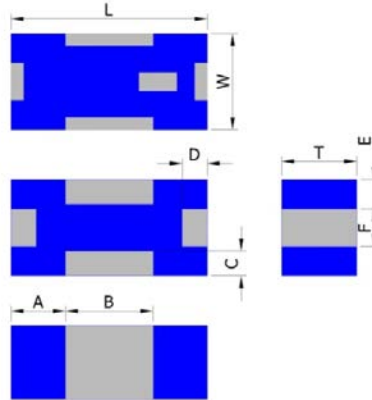
PRODUCT FEATURES

1. Surface mount band pass filter with a small size of 2.0 X 1.25 X 0.95 mm, RoHS compliant.
2. Provide low insertion loss and high rejection rate.
3. Highly stable under temperature and humidity changes.

RF CHARACTERISTICS

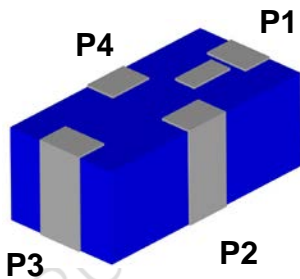
P/N BP5900B0805AT	Specification
Frequency range	4900- 5900 MHz
Insertion Loss (max)	1.5dB @ 4.90GHz 1.5dB @ 5.25GHz 1.5dB @ 5.85GHz
VSWR	2.0 max
Impedance	50 Ω
Attenuation (min.)	30 dB @ 3450 MHz 20 dB @ 11000 MHz
Operating temperature range	-40°C to +85°C

PHYSICAL DIMENSIONS



Symbol	Dimension (mm)
L	2.00 ± 0.15
W	1.25 ± 0.15
T	0.95 ± 0.10
A	0.50 ± 0.15
B	1.00 ± 0.15
C, D	0.25 ± 0.15
E	0.45 ± 0.15
F	0.30 ± 0.10

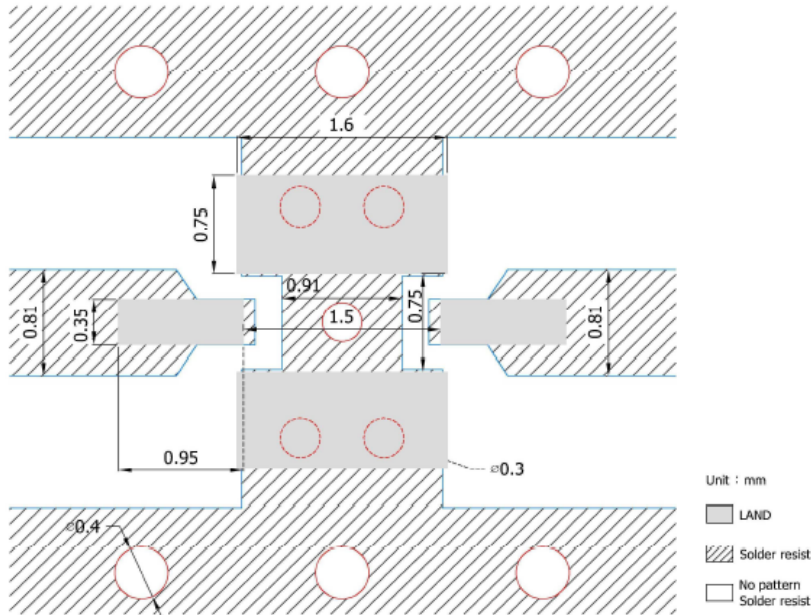
TERMINAL CONFIGURATION



PIN	Connection
1	INPUT/OUTPUT
2	GND
3	OUTPUT/INPUT
4	GND



PCB DESIGN/LAYOUT CONSIDERATION



Note:

- Design trace width to be 50Ω impedance.

Typical RF Performance

