

Rev	AWO #	Description	Date	Appr
-		RELEASED	9/06/10	

6

5

4

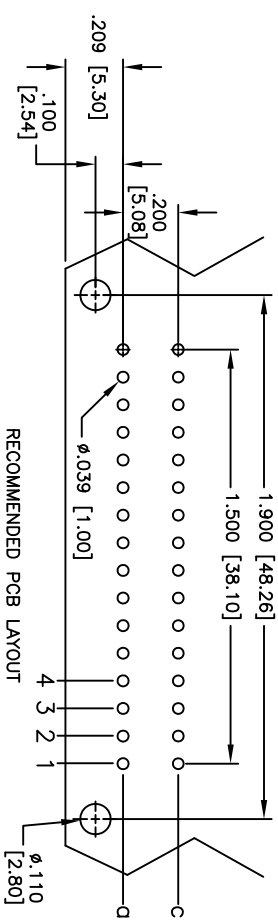
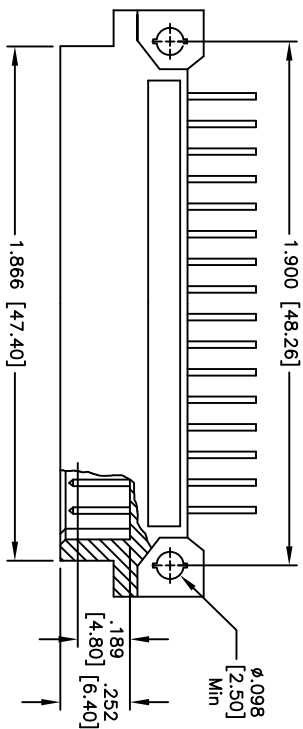
3

2

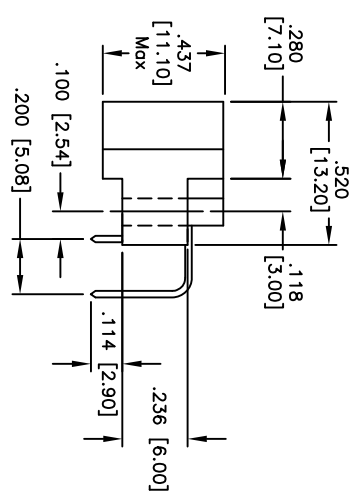
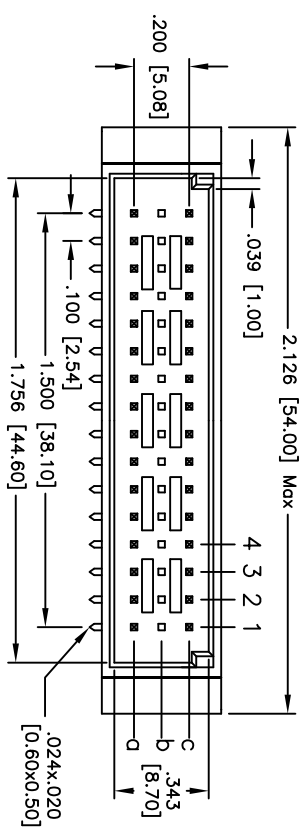
1

APPROVED: _____

DATE: _____ TITLE: _____



RECOMMENDED PCB LAYOUT



"X" PLATING	CLASS
1 30 u" Gold	1
2 15 u" Gold	2
3 Gold Flash	3

SPECIFICATIONS:

Material: Insulator: PBT, glass reinforced, rated UL 94V-0
 Insulator color: Beige
 Contacts: Copper Alloy
Plating:
 X Gold over Nickel underplate on contact area,
 Tin over Copper underplate on tails.
 (See chart for thickness)

Electrical:

Current rating: 2 Amps max
 Contact resistance: 20 mohms max
 Insulation resistance: 1000 Mohms min
 Dielectric withstanding voltage: 1000 VAC for 1 minute
Temperature Rating:
 Operating temperature: -55°C to +105°C
 Environmental:
 Lead free, RoHS compliant.
 Recommended soldering temp: 235°C for 5 sec.



UNLESS OTHERWISE SPECIFIED
 ALL DIMENSIONS ARE INCHES [MM]
 TOLERANCES: EXCEPT AS NOTED
 INCHES Holes

.X	± .10	Ø.X	± .10
.XX	± .020	Ø.XXX	± .015
.XXX	± .015	Ø.XXXX	± .010

APPROVALS

DATE	DATE

ADAM TECH

909 Ratway Avenue, Union, NJ 07083
 Phone: 908-687-5000 Fax: 908-687-5710

TITLE: DIN TYPE HALF C MALE, 32 PIN LOADED
 3 ROW RIGHT ANGLE, ROW A&C LOADED

DRAWN	DY	9/06/10
CHECKED		
APPROVED		

SIZE	PART NO.	REV.
X	DIN-32MR-S32-A1CX	-

REF: S00058T SCALE: NTS SHEET 1 OF 1

A

B

C

D

6

5

4

3

2

1

A

B

C

D