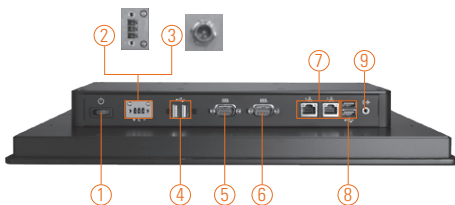
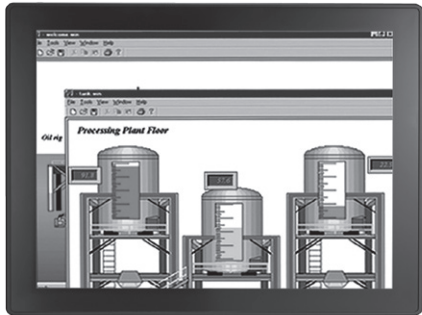


# GOT3177T-834

17" SXGA TFT Flat Front Bezel Touch Panel Computer with Intel® Bay Trail-D Celeron® Processor J1900 (-10°C ~ +50°C)

**NEW**



- |                                         |                           |                           |
|-----------------------------------------|---------------------------|---------------------------|
| 1. Power switch                         | 5. COM 1 (RS-232/422/485) | 10. CFast™ slot           |
| 2. Terminal block for DC power input or | 6. COM 2 (RS-232/422/485) | 11. Backlight switch      |
| 3. Screw conn. w/ AC power adapter      | 7. Ethernet x 2           | 12. Brightness adjustment |
| 4. USB 2.0 x 2                          | 8. USB 3.0 x 2            |                           |
|                                         | 9. Audio (Line-out)       |                           |



## Introduction

The GOT3177T is a 17" SXGA fanless touch panel computer. By supporting a wide temperature range from -10°C ~ +50°C, it can be used in any harsh environment. The unit adopts 17" SXGA TFT-LCD and low power consumption Intel® Celeron® processor. With the growing demand of wireless application, it provides two mini card slots for wireless/3G network connection. By just plugging in the WLAN/3G mini card, customers have instant access wireless environment. This model is suitable for many applications including transportation, train, control platform of ships, heavy industry, and oil pipe monitoring systems.

### Wide-temperature (-10°C ~ +50°C) supported

The GOT3177T adopts unique extended temperature technology, with a temperature range from -10°C ~ +50°C, with fanless cooling system and compact design for harsh environment.

### WLAN and 3G antennas supported (optional)

The GOT3177T provides two Mini card slots and WLAN/3G antennas for network connections. By simply plugging in the WLAN/3G mini card, customers can use the unit in a wireless environment.

## Features

- 17" SXGA TFT with modulated design
- Supports 17" flat resistive touch
- Fanless design with Intel® Celeron® processor J1900 4C@2.0GHz
- Supports 2.5" SATA HDD & CFast™ or mSATA
- Supports WLAN/3G module & antenna (optional)
- Supports 2 Giga LAN, 2 USB 2.0, 2 USB 3.0 and 2 COM ports
- IP65 front bezel
- Supports panel mount and optional VESA arm/desktop stand/wall mount
- Supports wide temperature range of -10°C ~ +50°C



▲ Modulated design



▲ Rear view

- 11
- 12

## Specifications

Front Bezel	IP65 front bezel	
LCD Panel	Display Type	17" SXGA TFT LCD
	Brightness (cd/m <sup>2</sup> )	350 nits
	Resolution	1280 x 1024
Main System	CPU	Intel® Bay Trail-D Celeron® Processor J1900 4C@2.0GHz
	System Memory	1 x 204-pin DDR3L 1333 and 1600 MT/s SO-DIMM up to 8 GB
	BIOS	AMI UEFI BIOS
	Storage	1 x 2.5" SATA HDD 1 x CFast™ or 1 x mSATA
	Watchdog Timer	255 levels, 0 ~ 255 sec.
	Onboard Graphics	Integrated Intel® GFX

## Specifications

I/O Connector	2 x RS-232/422/485 (default RS-232) 1 x Audio (Line-out) 2 x USB 2.0 2 x USB 3.0 2 x 10/100/1000Mbps Ethernet (Intel® i210IT)
Expansion Interface	1 x PCIe Mini Card slot (w/SIM slot, full size) 1 x PCIe Mini Card slot (support mSATA optional, full size)
Touchscreen	Flat resistive touch
Power Supply	9-36VDC
Dimensions	398.02 mm (15.64") (W) x 59.9 mm (2.36") (D) x 330.44 mm (13.01") (H)
Packing Dimensions	TBD
Weight (net/gross)	TBD
Environment	Operating temperature: -10°C ~ +50°C (+14°F ~ +122°F) Storage Temperature: -20°C ~ +60°C (-4°F ~ +140°F) Relative humidity: 20% ~ 90% @ 40°C; non-condensing Operation vibration: 2 G, 10 ~ 500Hz, random for CFast™
Certification	CE

\* W.T.: Wide Temperature. All W.T. supported products have to be sorted by Axiomtek.

## Ordering Information

GOT3177T-834-FR-DC	17" SXGA TFT fanless panel computer with Intel® Celeron® J1900 and flat resistive touch, DC version (-10°C ~ +50°C)
GOT3177T-834-FR-J	17" SXGA TFT fanless panel computer with Intel® Celeron® J1900 and flat resistive touch, AC version (-10°C ~ +50°C)

## Optional EOS Installation

WES 7 (64bit)  
WE8S

## Optional OS Installation

Windows® 8  
Windows® 7 (64bit)

Overview

Industrial Panel Computers & Monitors

Heavy-duty Fanless Touch Panel Computers

Digital Signage Solutions

Healthcare & Medical Solutions

Open Frame Panel Computers

Accessories

## Dimensions

