

NOTES:

1. ALL DIMENSIONS IN MM [INCH]
2. GENERAL TOLERANCE: X.XX=±0.4
X.XXX=±0.25
3. TERM. NOS. FOR REF. ONLY
4. CONTACT RATING: 4A @125VAC/28VDC, 2A @250VAC
5. DIELECTRIC STRENGTH: 1KV RMS min. at sea level
6. ELECTRICAL LIFE: 10,000 make-and-break cycles at full load.
7. MATERIALS:
CONTACTS: Silver plated CU (Q Contact material)
TERMINALS: GOLD Plated Cu (Q Contact material)
MOUNTING NUT: Nickel Plated zinc alloy
CONTACT SPRING: Plano Wire
KEYS: Brass with code no. A126
LOCK: Bright Ni plated zinc alloy with NI facing
TUMBLER Mechanism: 4-disc tumbler cylinder.
8. USES E-Switch Part NO. K200223 K0130N-A126
9. ▲ DENOTES CRITICAL PARAMETER.

| REV. | ECN No. | DESCRIPTION | DATE | CHKD |
|------|---------|-------------------------|--------|------|
| A | 13121 | RELEASED FOR PRODUCTION | 5/8/03 | AR |

| | | | |
|--------------------------|---------|------------------------------|---------|
| TITLE | | K0130N-A126, 3 WIRE ASSEMBLY | |
| SCALE | DATE | DR | DWG |
| 1.5:1 | 3/28/03 | AR | XK0089P |
| RECOMMENDED PANEL LAYOUT | | REV | A |



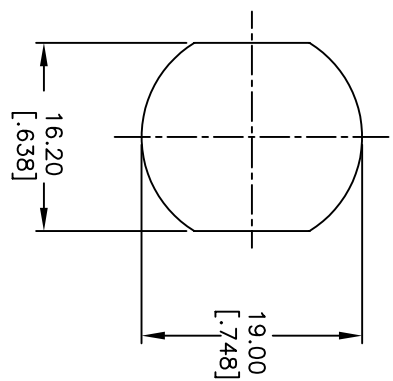
WIRE TO BE HOOK THRU SOLDERLUG ON SWITCH AND SOLDERED

22 AWG IRRADIATED PVC WIRE
UL 1430, CSA TYPE REW
105 C, 300V (UL),
COLOR BLUE
3 PLACES (POSITIONS 1,3,8)
Pos. 1

CIRCUIT: SP (90° INDEXING)
CONTACT CONFIGURATION

| SWITCH FUNCTION | CONNECTED TERMINAL # |
|-----------------|----------------------|
| POS. 1 | POS. 2 |
| 8-1 | 1-3 |

● =Detent Positions (45° or 90°)
⊙ =Key pull possible in these positions



RECOMMENDED PANEL LAYOUT