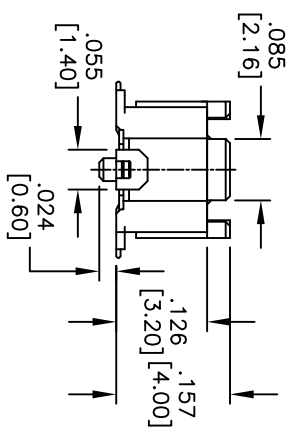
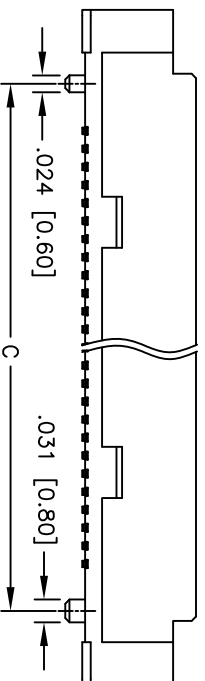
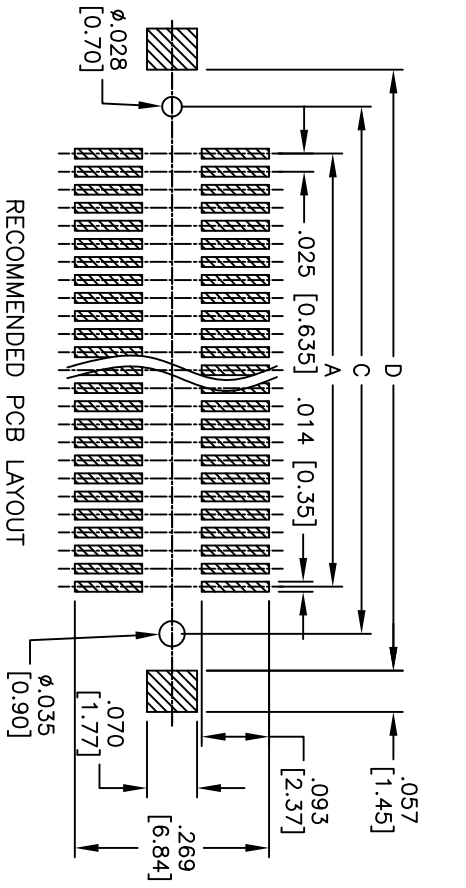
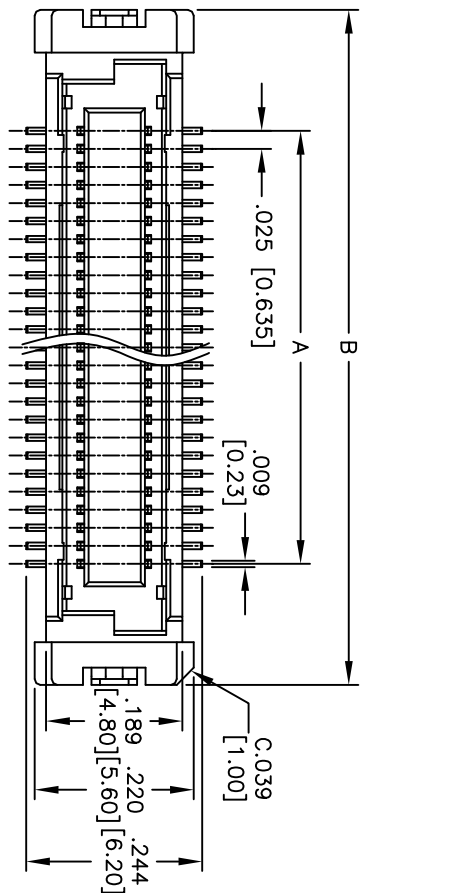


Rev	AWO #	Description	Date	Appr
-		RELEASED	12/08/10	

APPROVED: \_\_\_\_\_  
 DATE: \_\_\_\_\_ TITLE: \_\_\_\_\_



PACKAGED ON TAPE & REEL

Positions: 20, 30, 40, 50  
 A = .025 [0.635] x (No. of Contacts per row - 1) + .335 [8.50]  
 B = .025 [0.635] x (No. of Contacts per row - 1) + .130 [3.31]  
 C = .025 [0.635] x (No. of Contacts per row - 1) + .233 [5.91]  
 D = .025 [0.635] x (No. of Contacts per row - 1) + .233 [5.91]

**SPECIFICATIONS:**  
 Material: Insulator: Hi-temp thermoplastic, rated UL 94V-0  
 Insulator color: Natural  
 Contacts: Copper Alloy  
 Hold down: Copper Alloy  
 Plating: Gold flash over Nickel underplate overall.  
 Electrical: Operating voltage: 100 VAC max  
 Current rating: 0.5A per contact  
 Contact resistance: 40 mohms max. initial  
 Insulation resistance: 1000 Mohms min  
 Environmental: Lead free, RoHS compliant  
 Recommended soldering temp: 260°C for 5 seconds

**ADAM TECH**  
 909 Rahway Avenue, Union, NJ 07083  
 Phone: 908-687-5000 Fax: 908-687-5710

TITLE: .025 [0.635] BOARD TO BOARD SOCKET,  
 SMT TYPE, 4.00 HEIGHT

UNLESS OTHERWISE SPECIFIED ALL DIMENSIONS ARE INCHES [MM]	
.X	± .10
.XX	± .020
.XXX	± .015
.XXX	± .010

APPROVALS	DATE	SIZE	PART NO.	REV.
DRAWN	DY	12/08/10	BB635-SE-XX-G-4.00-T/R	-
CHECKED				
APPROVED				

