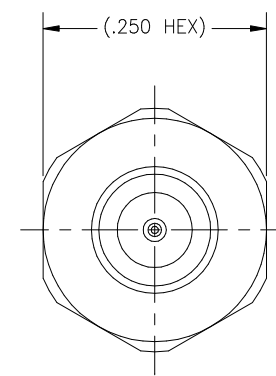
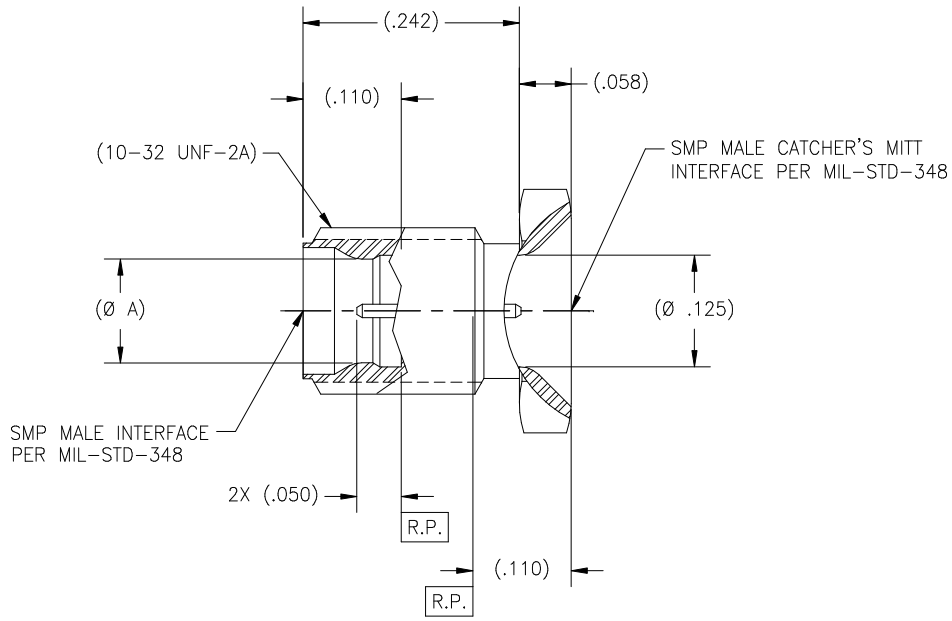


P/N	(Ø A)	INTERFACE
-1CCSF	.116	FULL DETENT
-2CCSF	.120	LIMITED DETENT
-3CCSF	.125	SMOOTH BORE

REVISIONS				
ZONE	REV	DESCRIPTION	DATE	BY
-	D	ECO 23091	4/13/10	PCV



MATERIAL:	ELECTRICAL:	MECHANICAL:	ENVIRONMENTAL:
Body: 303 sst per ASTM A-582. Center Conductor: BeCu alloy per ASTM B-196. Insulator: PTFE per ASTM D-1710.	Impedance: 50 Ohms Nom. Freq. Range: DC TO 18 GHz VSWR: 1.02 + .007 x f (GHz) Insertion Loss: .06√f(GHz) dB max Working Voltage: 150 Vrms @ Sea Level Dielectric Withstand Voltage: 500 V rms RF HiPot Voltage: 250 Vrms Min @ 5MHz Corona Level: 125 Vrms @ 70,000 ft Insulation Resistance: 5000 Mohms Contact Resistance: Center Contact: 3.0 Milliohms Outer Contact: 2.0 Milliohms RF Leakage: -65 dB min to 18GHz	Interface Dimensions: MIL-STD-348 Connector Durability: 100 Cycles for Full detent 500 Cycles for Limited detent Center Contact Retention: 3 lbs Min Axial N/A Radial Force to Engage and Disengage: 10 lbs Engage for Limited detent 15 lbs Engage for Full detent 2 lbs Disengage for Limited detent 5 lbs Disengage for Full detent	Temp. Range: -65°C to +165°C Thermal Shock: MIL-STD-202, Method 107, Test Cond. B Moisture Resistance: MIL-STD-202, Method 106. Insulation resistance at least 200 MegaOhms within 5 minutes after removal from humidity Corrosion: MIL-STD-202, Method 101, Test Cond. B Vibration: MIL-STD-202, Method 204, Test Cond. D Shock: MIL-STD-202, Method 213, Test Cond. I

FINISH:	APPLICABLE CARLISLE IT DOCUMENTS			TOLERANCES AND NOTES EXCEPT AS NOTED		MATERIAL		SIZE		SPECIFICATION		PROCUREMENT	
	WORK STD	PROD INST	ASSY INST	LINEAR	ANGULAR	APPROVAL INITIALS	DATE	QUALITY	SCALE	CAGE CODE	DRAWING NO.	SHEET	REV.
Body: Passivate per ASTM A-967. Center Conductor: Gold plate per ASTM B-488, over nickel under plate per AMS-QQ-N-290.	NA	NA	NA	LINEAR .XX ±.015 .XXX ±.005	ANGULAR ± 1/2° FRACTION ± 1/32	DKN	11.11.05	10:1	OL	30990	P912	1	D
NOTICE THIS DRAWING EMBODIES A CONFIDENTIAL PROPRIETARY DESIGN ORIGINATED BY CARLISLE INTERCONNECT TECHNOLOGIES AND ALL DESIGN, MANUFACTURING, REPRODUCTION, USE AND SALE RIGHTS REGARDING THE SAME ARE EXPRESSLY RESERVED. IT IS SUBMITTED UNDER A CONFIDENTIAL RELATIONSHIP FOR A SPECIFIC PURPOSE AND THE RECIPIENT AGREES BY ACCEPTING THIS DRAWING NOT TO SUPPLY OR DISCLOSE ANY INFORMATION REGARDING IT TO ANY UNAUTHORIZED PERSON TO INCORPORATE IN OTHER PROJECTS ANY SPECIAL FEATURE PECULIAR TO THIS DESIGN. ALL PATENT RIGHTS HEREIN ARE EXPRESSLY RESERVED BY CARLISLE INTERCONNECT TECHNOLOGIES, LONG BEACH, CA 90815				1. MACHINING FINISH: \sqrt{RMS} 2. BREAK ALL SHARP EDGES .003 MAX. 3. MACHINED FILLETS: .005 MAX. 4. MACHINED SURFACES SQUARE TO RESPECTIVE AXES WITHIN .005 INCHES PER INCH. 5. MACHINED DIAMETERS CONCENTRIC WITHIN .002 T.I.R. 6. DIMENSIONS TO BE MET BEFORE PLATING. 7. CHAMFER ALL THREADS 45°. 8. THREADS PER 4-20. 9. REMOVE FRAYED EDGES ON TEFLON. 10. REMOVE ALL BURRS.		CARLISLE Interconnect Technologies Long Beach, CA 90815		TITLE: SMP MALE BULKHEAD TO SMP MALE CATCHERS MITT ADAPTER SUB-DIRECTORY/FILENAME:		SHEET 1 OF 1			