



CM0100Q0504CT COMMON MODE FILTER SPECIFICATION

Rev. A

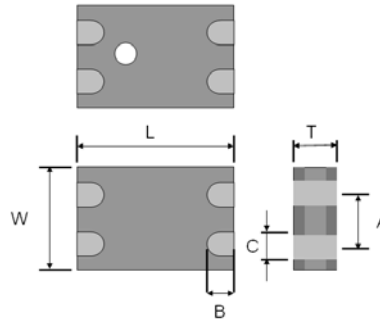
PRODUCT FEATURES

1. Surface mount common mode filter with a small size of 1.25 X 1.00 X 0.80 mm, RoHS compliant.
2. Provide wide pass band and high attenuation for common mode noise.
3. Highly stable under temperature and humidity changes.

RF CHARACTERISTICS

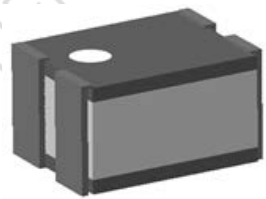
| P/N | CM0100Q0504CT | Specification |
|---|---------------|-----------------------------|
| Cut-off Frequency | | 4 GHz (Typical) |
| Common Mode Impedance | | 100 Ohms \pm 25% @ 100MHz |
| DC Resistance | | 1.0 Ω max. |
| Rated Current | | 300 mA |
| Characteristic Impedance (Differential) | | 100 Ω (Typical) |
| Operating temperature range | | -40°C to +85°C |

PHYSICAL DIMENSIONS



| Symbol | Dimension (mm) |
|--------|-----------------|
| L | 1.25 \pm 0.10 |
| W | 1.00 \pm 0.10 |
| T | 0.80 \pm 0.10 |
| A | 0.55 \pm 0.10 |
| B | 0.20 \pm 0.15 |
| C | 0.30 \pm 0.10 |

TERMINAL CONFIGURATION



PCB DESIGN/LAYOUT CONSIDERATION

| Figure | Symbol | Dimension (mm) |
|---|--------|-----------------|
| | L1 | 1.75 \pm 0.05 |
| | L2 | 0.30 \pm 0.10 |
| | L3 | 0.75 \pm 0.05 |
| | L4 | 0.55 \pm 0.05 |
| Design trace width to be 50 Ω impedance. | | |



Typical RF Performance

