

**PRODUCT DATASHEET**  
**PART NUMBER: C6201SNL**

**PRELIMINARY**

- Diplexer 975-1025 / 1125-1525 MHz
- Suitable for MoCA Applications
- Impedance = 75 Ohms
- Surge Protection 5KV, 500A, 2/1000uS
- RoHS Compliant

**Electrical Specifications @ 25°C**

**INSERTION LOSS : Lowpass [WAN]**

5-600 MHz	601-864 MHz	975-1025 MHz	1125-1150 MHz	1151-1400 MHz	1401-1525 MHz	2000 MHz			
50 dB Min	45 dB Min	4.5 dB Max	43.5 dB Min	47 dB Min	43.5 dB Min	40 dB Min			

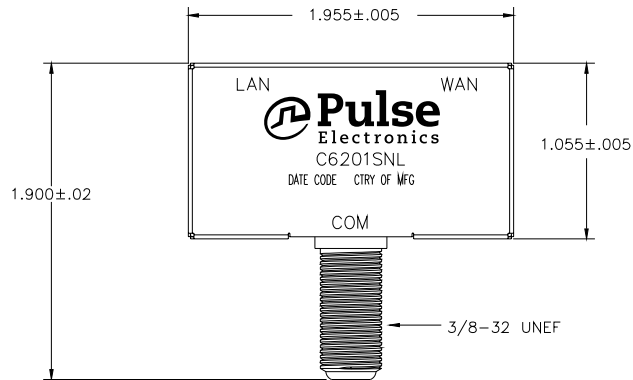
**INSERTION LOSS : Highpass [LAN]**

5-400 MHz	401-600 MHz	601-864 MHz	975-1025 MHz	1125 MHz	1150-1500 MHz	1525 MHz	2300 MHz	2500 MHz	3000 MHz
50 dB Min	40 dB Min	35 dB Min	27 dB Min	3.5 dB Max	2.5 dB Max	3.5 dB Max	37 dB Min	35 dB Min	30 dB Min

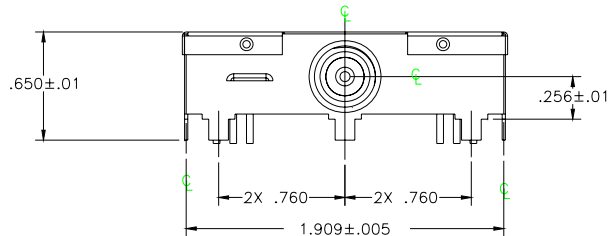
**RETURN LOSS : COMMON PORT**

975-1025 MHz	1125-1525 MHz								
8 dB Min	8 dB Min								

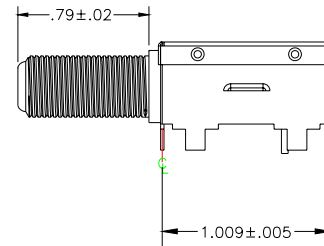
## Mechanical Specifications



TOP VIEW

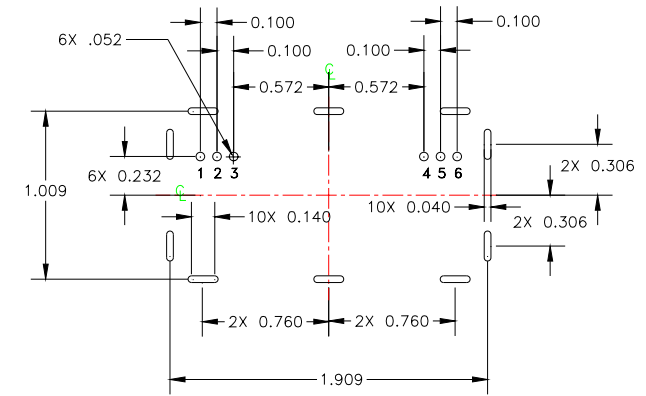


FRONT VIEW



SIDE VIEW

DESIGNATIONS	
COMMON PORT (COM)	FC1
LAN PORT (LAN)	PIN 2
WAN PORT (WAN)	PIN 5
GROUND (GND)	PINS 1 & 3
GROUND (GND)	PINS 4 & 6



SUGGESTED PAD LAYOUT  
TOP VIEW

HOUSING SPECIFICATIONS:  
 BODY – SPT  
 CONNECTOR – F TYPE, FEMALE

DIMENSIONS	INCH
TOLERANCES	.XX +/- .01
	.XXX +/- .005

**PRELIMINARY**