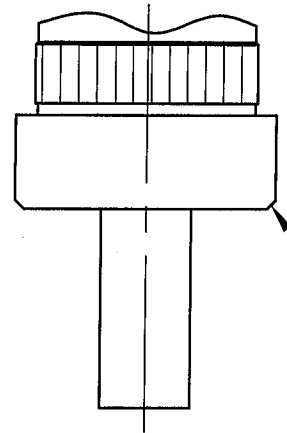
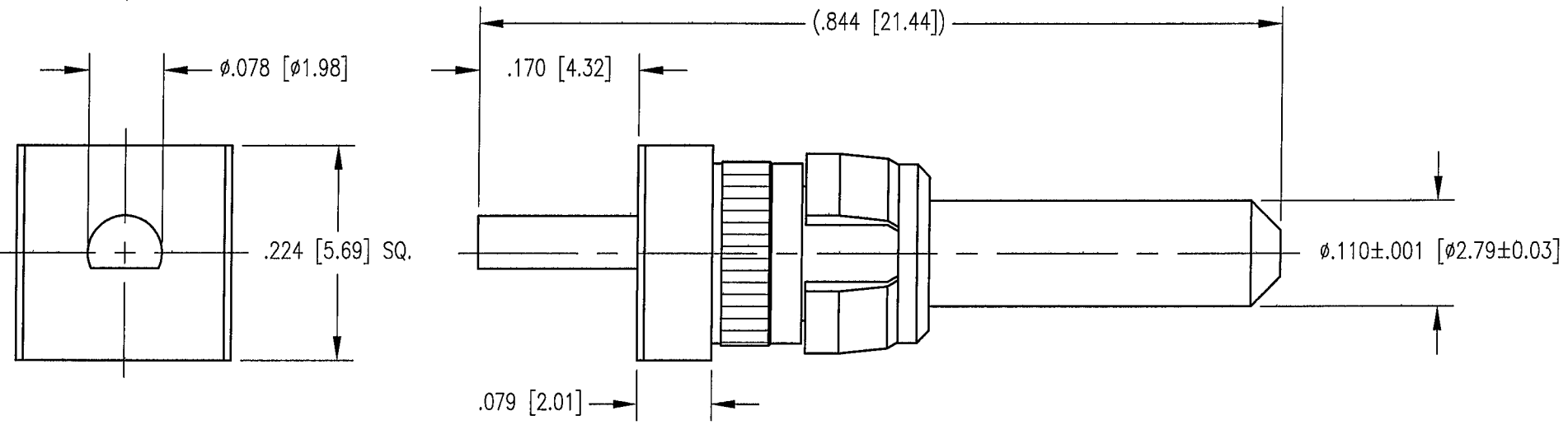


| | | | |
|--------------------------|----------------------|-----------------|------|
| DWG. NO. SD220-010-0048G | | | |
| REV | DESCRIPTION | BY DATE | APPD |
| A | RELEASE PER ECR 7760 | SD/23/03 JEM | |



.005/.010 [0.13/0.25]
X 45° TYP.



NOTES:

- MATERIALS:
 BODY: BRASS PER ASTM B16
 CLIP RING: BERYLLIUM COPPER PER ASTM B194
- FINISH:
 BODY: .000030 MIN. GOLD PER MIL-G-45204 OVER
 .000050 MIN. NICKEL PER ASTM QQ-N-290
 CLIP RING: .000100 MIN. NICKEL PER QQ-N-290 OVER
 COPPER FLASH

| | | | | | | | |
|--|----------|----------|----------|---|----|-----------------|--|
| PER ASME Y14.5M-1994 UNLESS OTHERWISE SPECIFIED: DIMENSIONS ARE IN INCHES (MM) | | | | NORTHROP GRUMMAN | | | |
| TOLERANCES: DECIMALS .XX ± .01 [0.254] .XXX ± .005 [0.127] ANGLES ± 2° | | | | Winchester Electronics 62 Barnes Industrial Road North Wallingford, CT 06492 | | | |
| SCALE: 6:1 | | | | TITLE FIRST MATE EDGE MOUNT PLUG | | | |
| CUSTOMER DRAWING | | | | A | | SD220-010-0048G | |
| DRAWN | DATE | CHECKED | DATE | SHT. | OF | REV. | |
| JEM | 01/20/03 | SD | 01/23/03 | 1 | 1 | A | |
| APPROVED | DATE | APPROVED | DATE | | | | |
| KJT | 01/22/03 | JED | 01/23/03 | | | | |