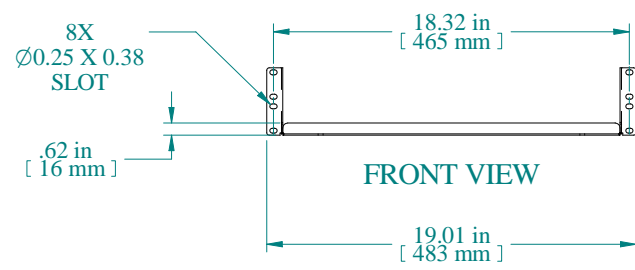
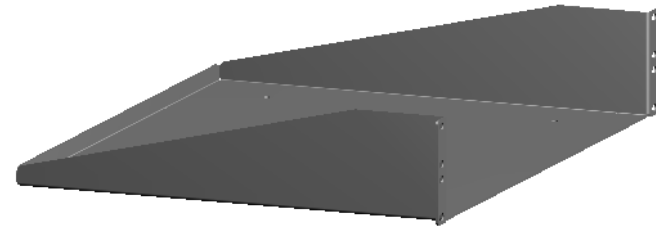
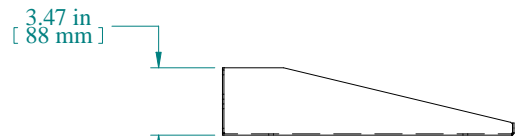


TOP VIEW



FRONT VIEW



SIDE VIEW

PART NUMBERS	
RASU190315BK1	PAINTED BLACK TEXTURED

NOTES
Maximum Weight 100 lb Mounting Hardware not Supplied with Shelf

Data subject to change without notice. Isometric drawing not to scale.



**HAMMOND  
MANUFACTURING™**  
www.hammondmfg.com  
PART NO. RASU190315