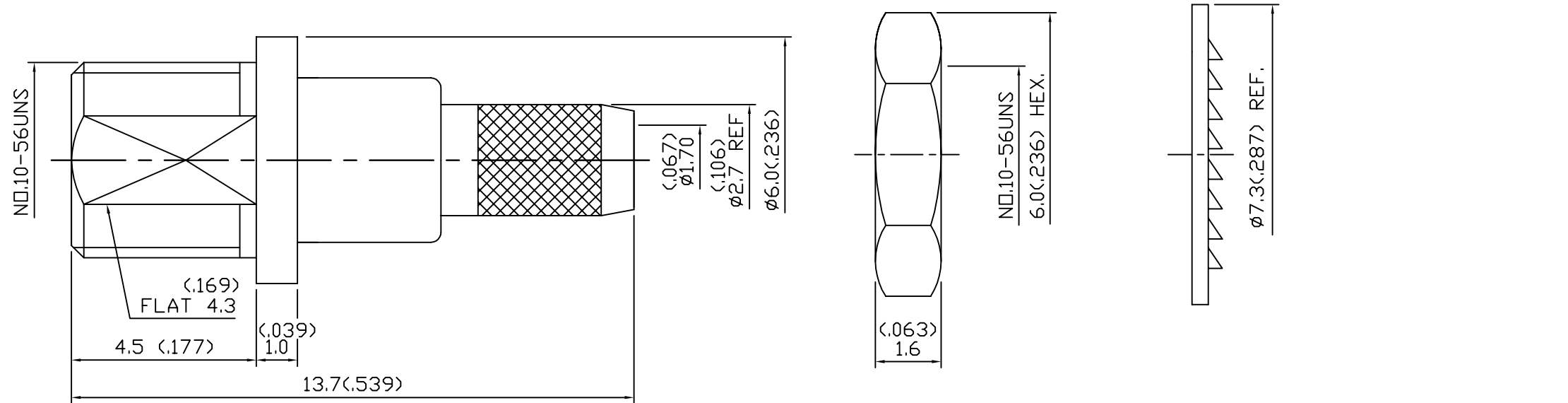


DRAWING REVISIONS			
REV	DOCUMENT	APP	DATE
2	PRELIM.		



NOTES:
 1. SPECIFICATIONS:
 MATERIALS:
 BODY, WASHER, NUT, CHASSIS & FERRULE: BRASS
 PLATING: GOLD 3 MICRO INCHES MIN.
 CENTER CONTACT: Be Cu
 PLATING: GOLD 30 MICRO INCHES MIN.
 INSULATOR: TEFLON

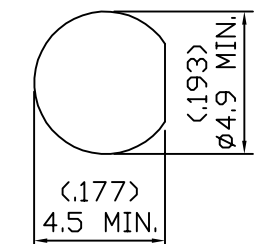
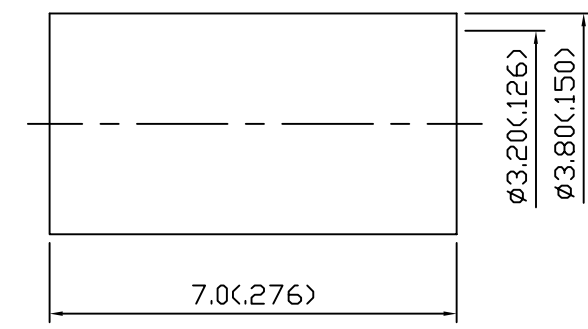
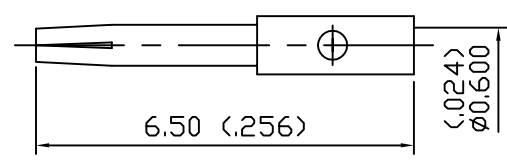
ELECTRICAL

IMPEDANCE: 50 Ohms
 FREQUENCY RANGE: 0 TO 6 GHz
 WORKING VOLTAGE: <= 500 V RMS MAX @SEA LEVEL
 INSULATION RESISTANCE: >= 1000 MOhms
 CONTACT RESISTANCE:
 CENTER CONTACT: 5 MILLI Ohms MAX.
 OUTER CONTACT: 2.5 MILLI Ohms MAX.

MECHANICAL:

DURABILITY: 500 MATING CYCLES.
 OPERATING TEMPERATURE: -65°C TO 125°C.
 CONNECTOR INTERFACE PER CECC 22000

2. ALL DIMENSIONS ARE IN MM AND DIMENSIONS IN () ARE IN INCHES.



SCALE 4:1
 MOUNTING HOLE

CINCH PART NO.	CINCH CATALOG NO.
299 98 04 008	MMCX50-8201

UNITS	METRIC	AUTOCAD	Cinch		1700 FINLEY RD LOMBARD, IL. 60148
DO NOT SCALE DRAWING	UNLESS OTHERWISE SPECIFIED, DIMENSIONS ARE IN MILLIMETERS	DRAWN BY A.BALI	DATE 05/05/03	TITLE MMCX SOCKET/JACK/STRA CABLE(RG-174U) MOUNT, 50 Ohms.	
FILLET/RADIUS 0.50 MAX.	TOLERANCES X ±2.5 XX ±0.25 XXX ±0.127 ANGULAR ±30°	DESIGN ENGINEER A.BALI	05/05/03	MATERIAL SEE NOTE	CONTROL SPEC NUMBER
TOLERANCES AND LIMITS APPLY OVER ADDITIVE FINISH		DESIGN ENGINEERING MGR.		MATERIAL SPEC NUMBER	FINISH
		MFG. ENGINEERING		CAD FILE NUMBER MMCX50-8201	DRAWING NUMBER MMCX50-8201
		QUALITY ASSURANCE		CAGE IDENT NO. 71785	SIZE B
THIS DOCUMENT IS THE PROPERTY OF CINCH. NEITHER THIS DOCUMENT NOR ANY OF THE INFORMATION CONTAINED IN IT MAY BE DUPLICATED OR DISCLOSED WITHOUT PRIOR WRITTEN CONSENT OF CINCH.			SCALE NTS	PROJECT NUMBER C14526	
				SHEET 1 OF 1	