

Customer Information Sheet

DRAWING No.: M95-2230942

SHEET 2 OF 2

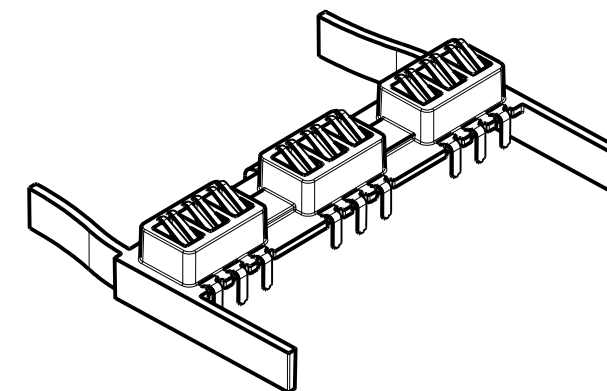
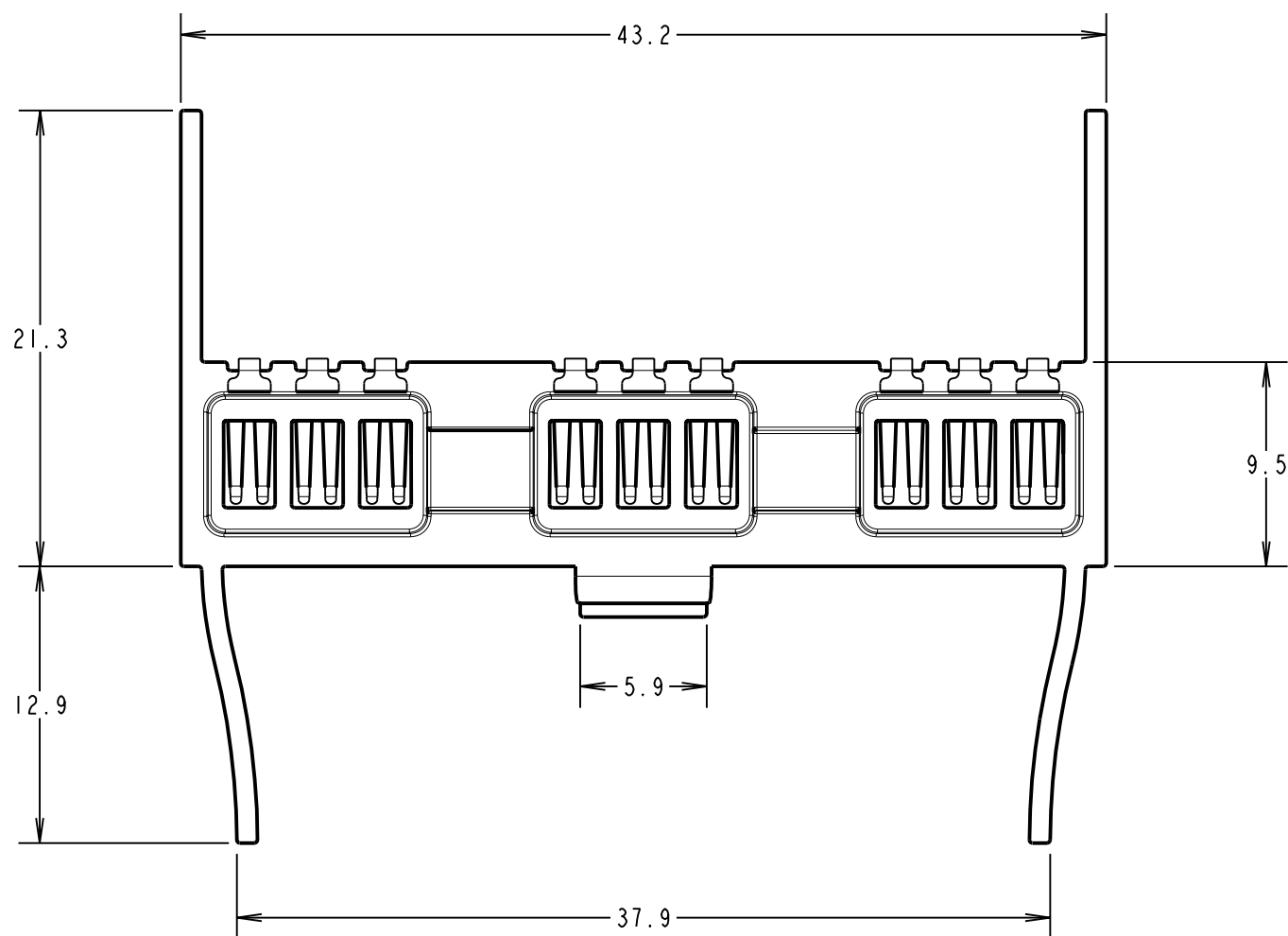
IF IN DOUBT - ASK

©

NOT TO SCALE

THIRD ANGLE PROJECTION

ALL DIMENSIONS IN mm

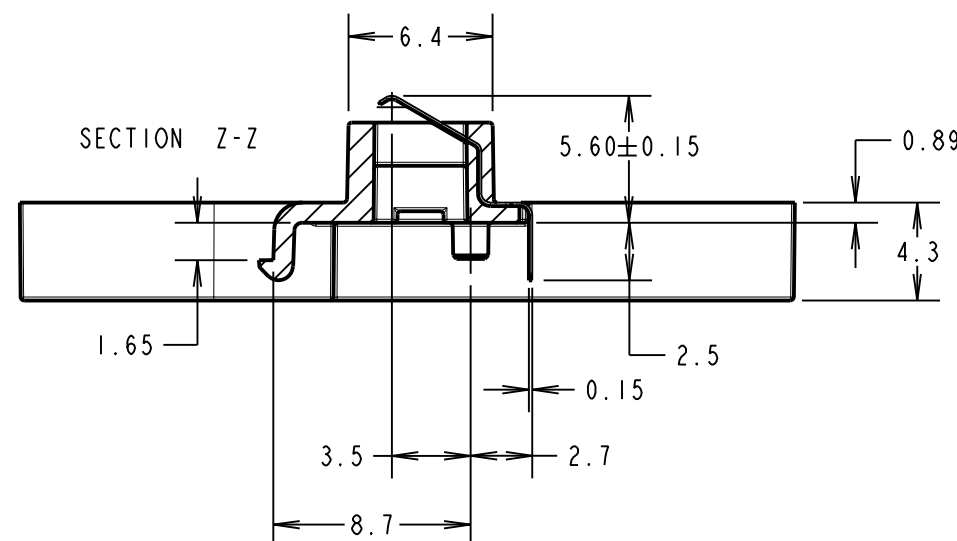
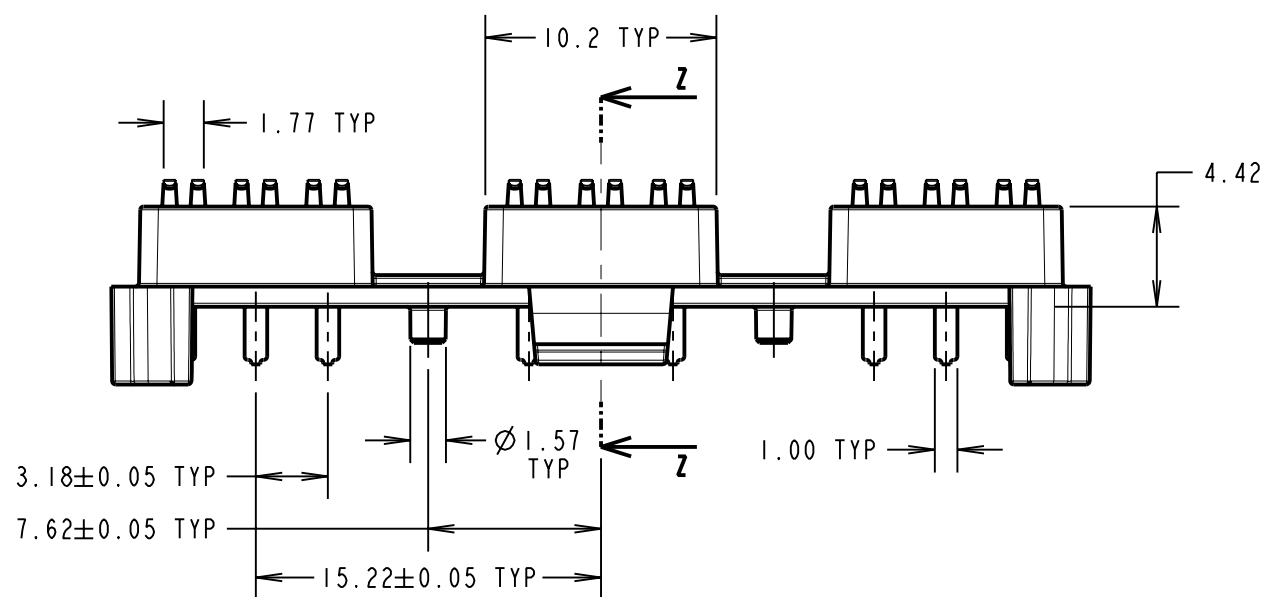


COMPONENT SPECIFICATION:

MATERIAL:
 INSULATOR = 30% GF POLYAMIDE 46, UL94V-0 BLACK;
 CONTACTS = BERYLLIUM COPPER

FINISH:
 CONTACTS = 0.75µ MIN GOLD IN MATING AREA AND
 3.75µ MIN 100% TIN ON SOLDER TAILS,
 BOTH OVER NICKEL.

COMPLIANCE:
 THE CONNECTOR ASSEMBLY IS RoHS COMPLIANT.



MGP	A	12.10.09	----
NAME	ISS.	DATE	C/NOTE
APPROVED: MGP			
CHECKED: RA			
DRAWN: MARK G PLESTED			
CUSTOMER REF.:			
ASSEMBLY DRG:			

HARWIN

HARWIN USA TEL: 603 893 5376 FAX: 603 893 5396 mis@harwin.com	HARWIN Europe (UK) TEL: 023 9231 4545 FAX: 023 9231 4590 mis@harwin.co.uk	HARWIN Asia TEL: +65 6 779 4909 FAX: +65 6 779 3868 mis@harwin.com.sg
--	--	--

THIS DRAWING AND ANY INFORMATION OR DESCRIPTIVE MATTER SET OUT HEREON ARE CONFIDENTIAL AND COPYRIGHT PROPERTY OF THE HARWIN GROUP AND MUST NOT BE DISCLOSED, LOANED, COPIED OR USED FOR MANUFACTURING, TENDERING OR FOR ANY OTHER PURPOSE WITHOUT THEIR WRITTEN PERMISSION.

TOLERANCES
 X. = ±1mm
 X.X = ±0.25mm
 X.XX = ±0.10mm
 X.XXX = ±0.01mm
 ANGLES = ±5°
 UNLESS STATED

MATERIAL:
 SEE ABOVE

FINISH:
 SEE ABOVE

S/AREA:
 mm²

TITLE:
 BATTERY CONNECTOR
 3 + 3 + 3 PC TAIL CONTACTS

DRAWING NUMBER:
 M95-2230942

SHT
 2 OF 2