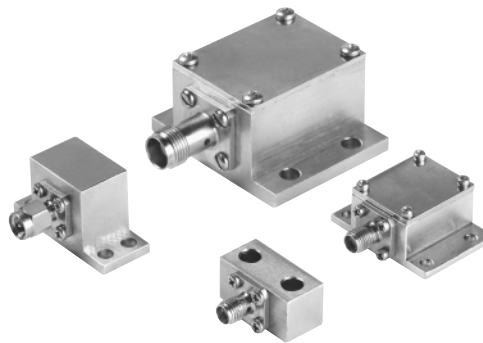


HIGH POWER COAXIAL TYPE N, SMA, TNC TERMINATIONS DC-18 GHz CONDUCTION (HEAT SINK) COOLED

SERIES PCX

GENERAL INFORMATION

The PCX Series High Power Terminations are designed to dissipate RF power when mounted to a heat sink or chill plate. Power levels from 15 to 500 watts in 50 ohm impedance are available in units with type SMA, TNC or Type N, male or female connectors. Improved VSWR models over narrow bandwidths are available from D.C. to 18 GHz. High stability thin film resistive elements on beryllium oxide substrates are used to insure stable VSWR performance over temperature and environmental conditions.



PERFORMANCE SPECIFICATIONS

Part Number	Input Power(Watts) (Note 1)	Frequency Range (Note 2)	Connector Type	VSWR (Maximum)	Outline	
PCX-050-F-15	15	DC-12.4 GHz	SMA FEMALE	DC-4 GHz—1.15:1	A	
PCX-050-M-15			SMA MALE	4.8 GHz—1.20:1		
PCX-050-F-30	30	DC-8 GHz	SMA FEMALE	DC-4 GHz—1.25:1	B	
PCX-050-M-30			SMA MALE	4-8 GHz—1.35:1		
PCX-075-F-30			TNC FEMALE	8-18 GHz—1.40:1		
PCX-075-M-30			TNC MALE			
PCX-050-F-50	50	DC-6 GHz	SMA FEMALE	DC-3 GHz—1.25:1	C	
PCX-050-M-50			SMA MALE	3-6 GHz—1.35:1		
PCX-050-F-100	100	DC-3 GHz	SMA FEMALE	DC-3 GHz—1.25:1	C	
PCX-050-M-100			SMA MALE			
PCX-075-F-100			TNC FEMALE			
PCX-050-F-100-(XX)			SMA FEMALE			1.4—8%B.W. 1.15—1%B.W.
PCX-050-F-150	150	DC-2 GHz	SMA FEMALE	DC-1 GHz—1.15:1	D	
PCX-050-M-150			SMA MALE			
PCX-100-F-150			N FEMALE			1-2 GHz—1.40:1
PCX-100-M-150			N MALE			
PCX-050-F-250	250	DC-800 MHz	SMA FEMALE	DC-200 MHz—1.15:1	D	
PCX-050-M-250			SMA MALE	200-400 MHz—1.25:1		
PCX-100-F-250			N FEMALE	400-800 MHz—1.30:1		
PCX-100-M-250			N MALE			
PCX-100-F-500	500	DC-200 MHz	N FEMALE	DC-200 MHz—1.30:1	D	
PCX-100-M-500			N MALE			

Notes:

1. Operating Temperature: 15 watt models 100°C maximum case temperature. All other models 85°C maximum case temperature.
2. Narrowband (8%) performance up to 18 GHz available in special units.
3. Specify center frequency in GHz.

KEY: Inches[Millimeters] .XX ±.03 .XXX ±.010 [.X ±0.8 .XX ±0.25]

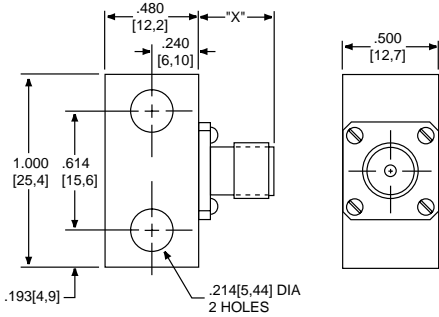


KDI-RESISTOR PRODUCTS

60 South Jefferson Road, Whippany, NJ 07981 • Tel: 973-887-8100 • Fax: 973-884-0445
E-Mail: sales@mckedi-resistor.com • See us on the web @ www.mckedi-resistor.com

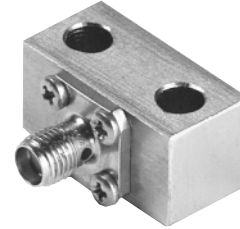
HIGH POWER COAXIAL TYPE N, SMA, TNC
TERMINATIONS
DC-18 GHz CONDUCTION (HEAT SINK) COOLED

SERIES PCX

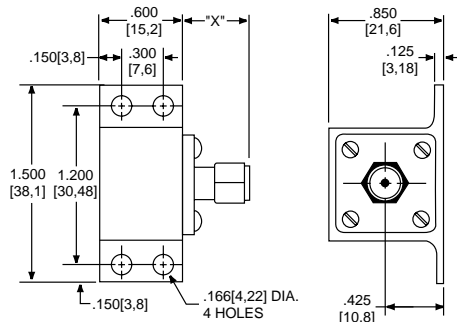


OUTLINE A

MODEL	"X"
PCX-050-F-15	.375 [9,53]
PCX-050-M-15	.507 [12,88]

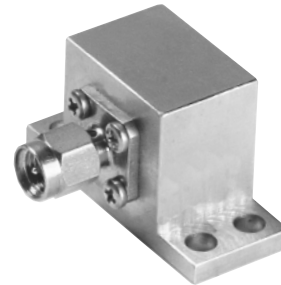


SMA CONNECTORS 15 WATTS

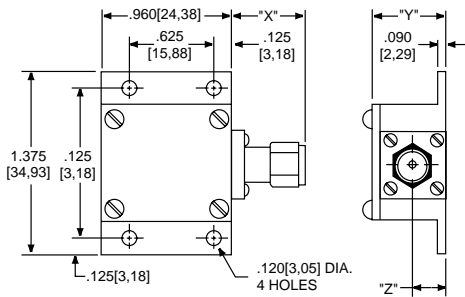


OUTLINE B (Shown with SMA)

MODEL	"X"
PCX050-F-30	.375 [9,53]
PCX050-M-30	.507 [12,88]
PCX075-F-30	.750 [19,1]
PCX075-M-30	.844 [21,44]

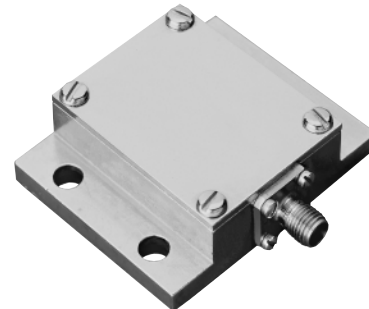


SMA OR TNC CONNECTORS 30 WATTS

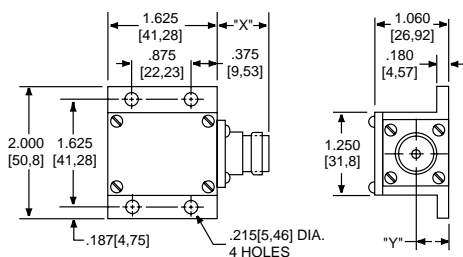


OUTLINE C (Shown with SMA)

MODEL	"X"	"Y"	"Z"
PCX050-F-50	.375 [9,53]	.560 [14,22]	.260 [6,60]
PCX050-M-50	.507 [12,88]	.560 [14,22]	.260 [6,60]
PCX050-F-100	.375 [9,53]	.560 [14,22]	.260 [6,60]
PCX050-M-100	.507 [12,88]	.560 [14,22]	.260 [6,60]
PCX075-F-100	.736 [18,69]	.970 [24,64]	.480 [12,2]



SMA OR TNC 50 & 100 WATTS



OUTLINE D (Shown with TYPE N)

MODEL	"X"	"Y"
PCX050-F-150, 250	.375 [9,53]	.515 [13,08]
PCX050-M-150, 250	.375 [9,53]	.515 [13,08]
PCX100-F-150, 250, 500	.736 [18,69]	.508 [12,9]
PCX100-M-150, 250, 500	.819 [20,8]	.508 [12,9]



**SMA OR N CONNECTORS
150/250 & 500 WATTS**

MATERIALS

Connectors: SMA and TNC - Stainless Steel Passivated per MIL-C-39012; TYPE N - Nickel Plated Brass per MIL-C-39012 Housing: Copper, Nickel Plated per QQ-N-290.

KEY: Inches[Millimeters] .XX ±.03 .XXX ±.010 [.X ±0.8 .XX ±0.25]



KDI-RESISTOR PRODUCTS

60 South Jefferson Road, Whippany, NJ 07981 • Tel: 973-887-8100 • Fax: 973-884-0445
 E-Mail: sales@mcekd-resistor.com • See us on the web @ www.mcekd-resistor.com