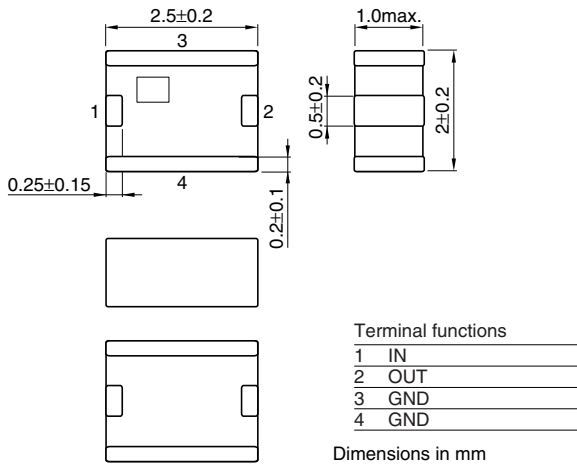


Multilayer Chip Band Pass Filters For 5.0GHz W-LAN

Conformity to RoHS Directive

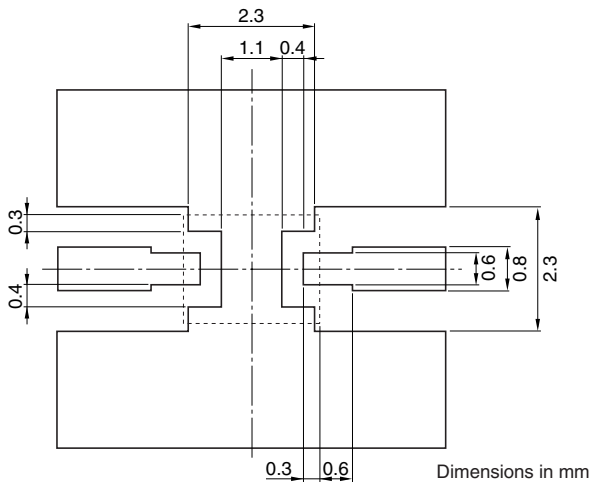
DEA Series DEA255375BT-2076A1

SHAPES AND DIMENSIONS



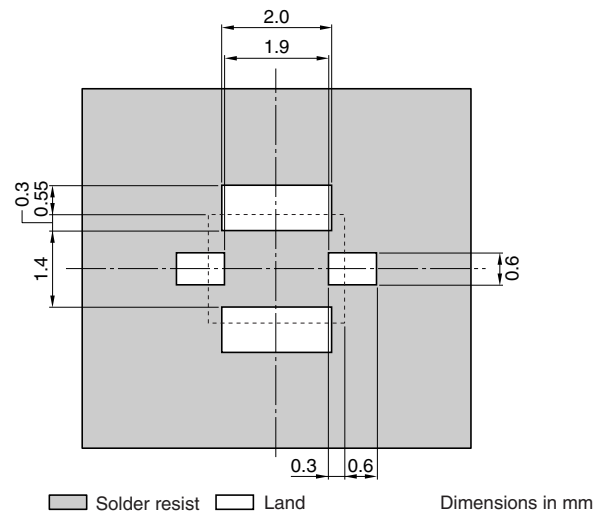
RECOMMENDED PC BOARD PATTERNS

LAND



Line width be designed to match 50Ω characteristic impedance depending on PCB material and thickness.

SOLDER RESIST



ELECTRICAL CHARACTERISTICS

Item				Minimum value	Typical value	Maximum value
Center frequency		[5375MHz]		—	—	—
Insertion loss	[25°C]	[4900 to 5850MHz]	(dB)	—	—	1.2
	[-40 to +85°C]	[4900 to 5850MHz]	(dB)	—	—	1.5
VSWR		[4900 to 5850MHz]		—	—	2.0
Ripple in Pass Band		[4900 to 5850MHz]	(dB)	—	—	1.0
Attenuation	[25°C]	[824 to 1910MHz]	(dB)	50	—	—
	[-40 to +85°C]	[9880 to 11700MHz]	(dB)	15	—	—
Temperature range	Operating		(°C)	-40	—	+85
	Storage		(°C)	-40	—	+85

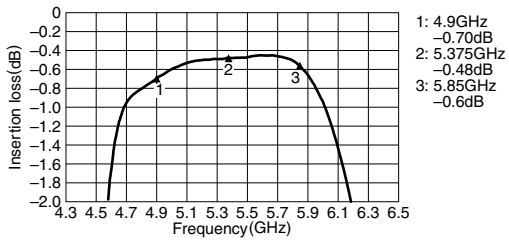
• Ta: +25°C

• Conformity to RoHS Directive: This means that, in conformity with EU Directive 2002/95/EC, lead, cadmium, mercury, hexavalent chromium, and specific bromine-based flame retardants, PBB and PBDE, have not been used, except for exempted applications.

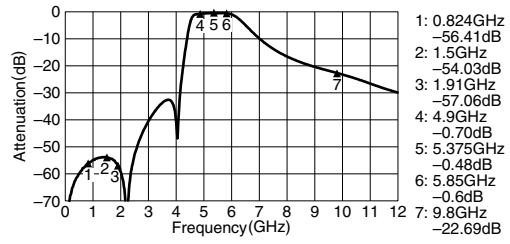
• All specifications are subject to change without notice.

FREQUENCY CHARACTERISTICS

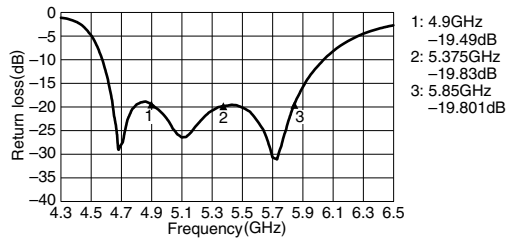
INSERTION LOSS



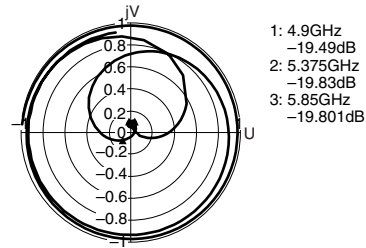
ATTENUATION



RETURN LOSS



VSWR



• All specifications are subject to change without notice.