

REFERENCE SPECIFICATIONS

•MFC 93425 (in compliance with ME 507)

PHYSICAL CHARACTERISTICS

- INSULATOR MATERIAL: THERMOPLASTIC UL94V0
- CONTACT MATERIAL: PHOSPHOR BRONZE(SIGNAL CONTACT)
BRASS (POWERS CONTACT)
- ACCESSORIES: BRASS
- SHELLS: STEEL

ELECTRICAL CHARACTERISTICS

- NOMINAL CURRENT: 7.5A (SIGNAL CONTACT)
30A or 40A (POWER CONTACT)
- CONTACT RESISTANCE: <:7.3 m Ohms(SIGNAL and POWER)
- CONTACT/VOLTAGE : >:1000 V
- CONTACT/GROUND : >:1200 V
- INSULATION RESISTANCE: >:5000 MOhms
- CLIMATIC CATEGORY: 55/125/21
TEMPERATURE RANGE -55°C TO +125°C
DAMP HEAT STEADY STATE 21 DAYS
SALT SPRAY 48 HOURS
- RETENTION AGAINST TORQUE: • Threaded insert: 0.7 N.m minimum
• Female screw : 0.5 N.m minimum

NOTE RoHS INFORMATION

- The "LF" products meet european union Directives and other country regulations as described in GS-22-008.
- The housing will withstand exposure to 260°C peak temperature for 3.5 seconds in a wave solder application with a 1.6mm minimum thick circuit board. See application notes/procedures if they are available.
- Termination plating spec:
 - Signal contacts: Ni + Gold
 - Power contacts: Ni 1.27µm+Sn 2.5 to 7.5µm,pure bright
- Active area plating spec:
 - Signal and power contacts: Ni + Gold
- Shell plating : 2 to 4µm Cu + 3 to 10µm Sn,pure bright
- Accessories: Sn pure bright
- Packaging spec: See GS-14-920

DBL13W3S300G30LF

Series

Shell size: E A B C D
see sheet 3

Front accessory definition
see sheet 2

- L : threaded insert M3
- O : threaded insert UNC 4-40
- V : female screw UNC 4-40

Layout of contacts (see sheet 3)

Contacts

- S : Socket

Termination type

- 3 Straight version

Plating

- 00 200 matings/unmatings
- 43 500 matings/unmatings

PCB accessories definition
see sheet 2

- H :Metal brackets+harpoons for PCB 2.40mm
- G :Metal brackets+harpoons for PCB 1.60mm

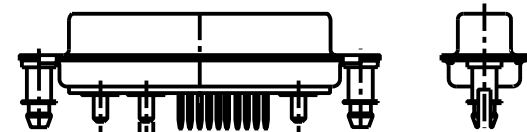
Power contacts

- 30 :Filled with power contacts 30 Amp.
- 40 :Filled with power contacts 40 Amp.

See note RoHS

TABLE 1:PCB HOLE DIAMETERS

	POWER CONTACTS		ACCESSORIES	SIGNAL CONTACTS
	30 A	40 A	Ø3.10	Ø0.90 min
Max current	2.00	2.80	PCB HOLE ±0.1	PCB HOLE ±0.1
power	ØA ±0.1	PCB HOLE ±0.1	PCB HOLE ±0.1	PCB HOLE ±0.1

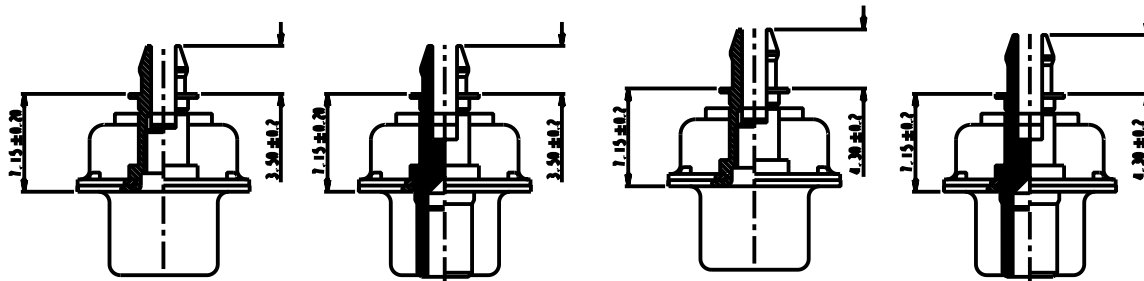


13W3 FOR EXAMPLE

www.fciconnect.com		surface	tolerance std	projection	mm
		ISO 1302	ISO 406 ISO 1101	⊕	mm
		TOLERANCES UNLESS OTHERWISE SPECIFIED			
Dr	M PESSON	2005-10-11	ANGULAR	0.X ±0.3	size A2 Scale 2:1
Eng	P LEGARE	2005-10-11	LINEAR	0.XX ±0.1	ECN LS07-0113
Chr			0° ±2°	0.XXX ±0.05	Spec ref
Appr			Product family		
FCI		SUB FEMALE DW		ang no	C01-8639-2302
		mixed power straight solder		Rev.	C
catalog no		CUSTOMER		sheet 1 of 7	

rev	acc no	dr	date
A	LS05-0101	MPE	2005-10-11
B	LS06-0208	LGO	2006-12-12
C	LS07-0133	MPE	2007-04-20
-	-	-	-
-	-	-	-
-	-	-	-

Copyright FCI



FRONT ACCESSORY	L insert M3 O insert UNC 4.40	V insert UNC 4.40	L insert M3 O insert UNC 4.40	V insert UNC 4.40
PCB ACCESSORIES	G Harpoon for PCB 1.60mm	G Harpoon for PCB 1.60mm	H Harpoon for PCB 2.40mm	H Harpoon for PCB 2.40mm

PART NUMBER	AMPS	RATINGS/ UMMATINGS	FRONT ACCESSORY	PCB ACCESSORIES
D=LxW=S300G30LF	30	200	insert M3	harpoon PCB 1.60mm
D=OxW=S300G30LF	30	200	insert UNC 4.40	harpoon PCB 1.60mm
D=VxW=S300G30LF	30	200	female screw UNC 4.40	harpoon PCB 1.60mm
D=LxW=S300H30LF	30	200	insert M3	harpoon PCB 2.40mm
D=OxW=S300H30LF	30	200	insert UNC 4.40	harpoon PCB 2.40mm
D=VxW=S300H30LF	30	200	female screw UNC 4.40	harpoon PCB 2.40mm
D=LxW=S300G40LF	40	200	insert M3	harpoon PCB 1.60mm
D=OxW=S300G40LF	40	200	insert UNC 4.40	harpoon PCB 1.60mm
D=VxW=S300G40LF	40	200	female screw UNC 4.40	harpoon PCB 1.60mm
D=LxW=S300H40LF	40	200	insert M3	harpoon PCB 2.40mm
D=OxW=S300H40LF	40	200	insert UNC 4.40	harpoon PCB 2.40mm
D=VxW=S300H40LF	40	200	female screw UNC 4.40	harpoon PCB 2.40mm

shell size LAYOUTS

- e xWx
- E 5W1
- A 11W1
- A 7W2
- B 21W1
- B 17W2
- B 13W3
- B 9W4
- C 25W3
- C 21WA4
- C 27W2
- D 47W1
- D 24W7
- D 36W4

PART NUMBER	AMPS	RATINGS/ UMMATINGS	FRONT ACCESSORY	PCB ACCESSORIES
D=LxW=S343G30LF	30	500	insert M3	harpoon PCB 1.60mm
D=OxW=S343G30LF	30	500	insert UNC 4.40	harpoon PCB 1.60mm
D=VxW=S343G30LF	30	500	female screw UNC 4.40	harpoon PCB 1.60mm
D=LxW=S343H30LF	30	500	insert M3	harpoon PCB 2.40mm
D=OxW=S343H30LF	30	500	insert UNC 4.40	harpoon PCB 2.40mm
D=VxW=S343H30LF	30	500	female screw UNC 4.40	harpoon PCB 2.40mm
D=LxW=S343G40LF	40	500	insert M3	harpoon PCB 1.60mm
D=OxW=S343G40LF	40	500	insert UNC 4.40	harpoon PCB 1.60mm
D=VxW=S343G40LF	40	500	female screw UNC 4.40	harpoon PCB 1.60mm
D=LxW=S343H40LF	40	500	insert M3	harpoon PCB 2.40mm
D=OxW=S343H40LF	40	500	insert UNC 4.40	harpoon PCB 2.40mm
D=VxW=S343H40LF	40	500	female screw UNC 4.40	harpoon PCB 2.40mm

SCALE: 4

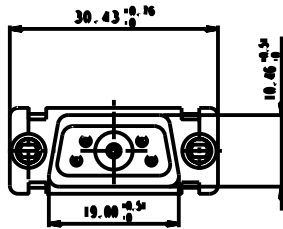
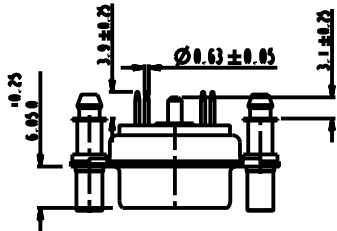
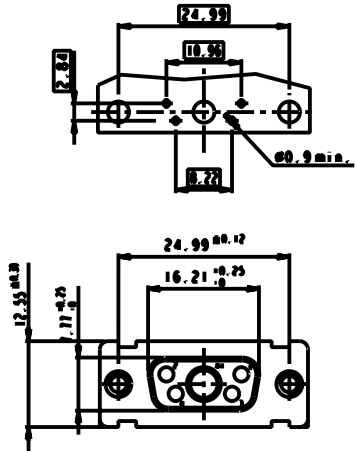
Copyright FCi.

www.fciconnect.com		surface - ISO 1302	tolerance std ISO 406 ISO 1101	projection mm
		TOLERANCES UNLESS OTHERWISE SPECIFIED		
Dr M PESSON	2005-10-11	ANGULAR	0.X ±0.3	size A2 Scale 2:1
Eng P LEGARE	2005-10-11	LINEAR	0.XX ±0.1	ECN LS07-0113
Chr		0° ±2°	0.XXX ±0.05	Spec ref
Appr		Product family		
FCi		SUB FEMALE DW		Rev. C
		mixed power straight solder		ang no C01-8639-2302
		catalog no		CUSTOMER sheet 2 of 7

5W1

LAYOUT AND CONNECTOR DIMENSIONS

For PCB hole diameters see table 1 sheet 1

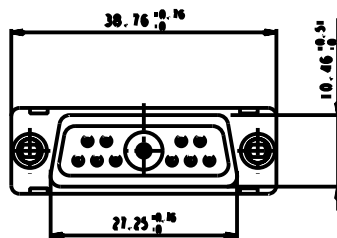
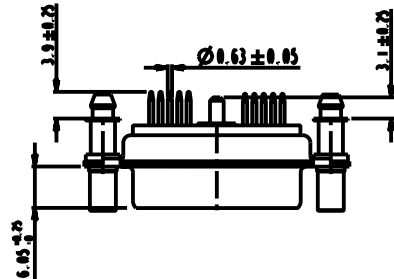
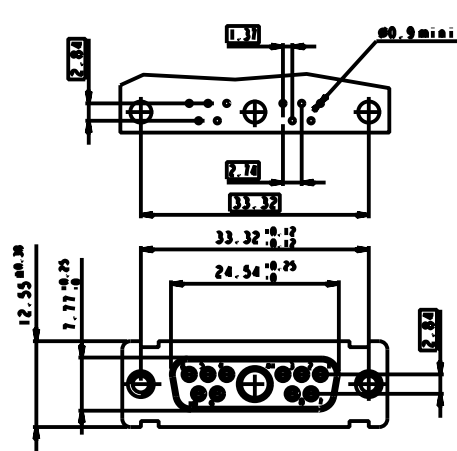


floating signal contacts

11W1

LAYOUT AND CONNECTOR DIMENSIONS

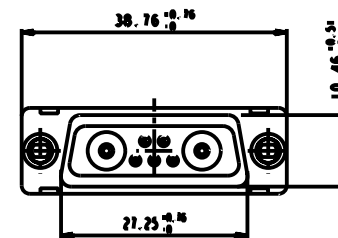
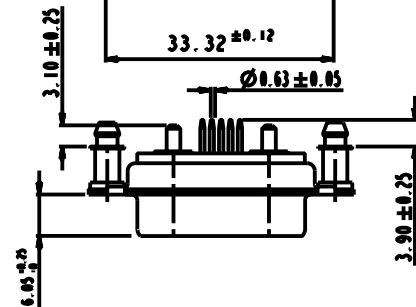
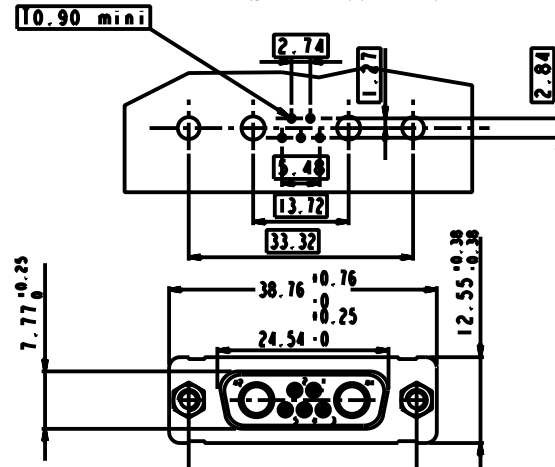
For PCB hole diameters see table 1 sheet 1



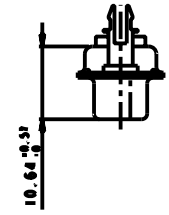
7W2

LAYOUT AND CONNECTOR DIMENSIONS

For PCB hole diameters see table 1 sheet 1



SIDE VIEW FOR LAYOUTS: E A B C



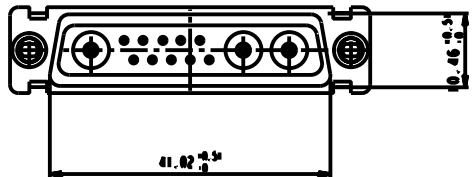
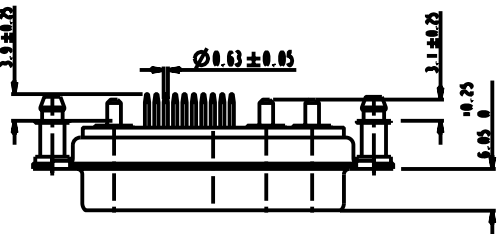
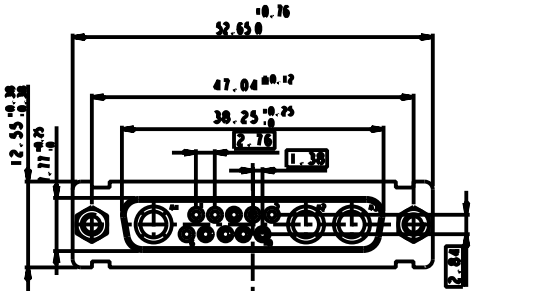
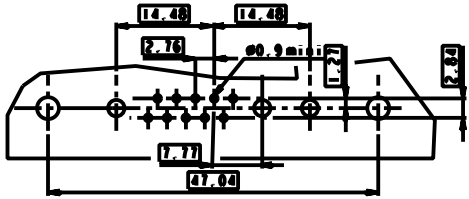
Copyright FCI

www.fciconnect.com		surface ISO 1302	tolerance std ISO 406 ISO 1101	projection mm
Dr M PESSON 2005-10-11		TOLERANCES UNLESS OTHERWISE SPECIFIED		size A2 Scale 2:1
Eng P LEGARE 2005-10-11	ANGULAR	0.X	±0.3	ECN LS07-0113
Chr	LINEAR	0.XX	±0.1	Spec ref
Appr	0° ±2°	0.XXX	±0.05	
Product family		SUB FEMALE DW		
Title		mixed power straight solder		Rev. C
catalog no		C01-8639-2302		sheet 3 of 7
		CUSTOMER		

13W3

LAYOUT AND CONNECTOR DIMENSIONS

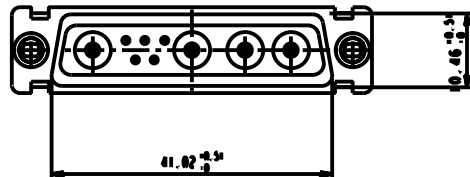
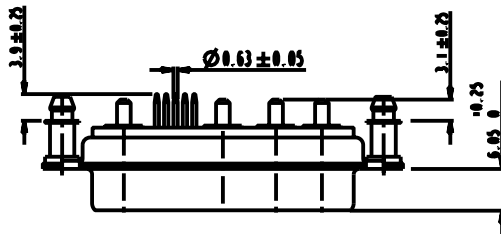
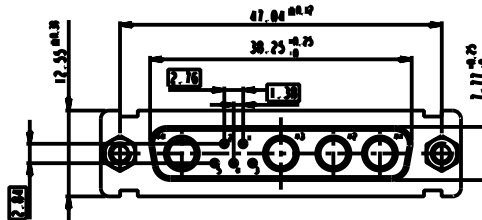
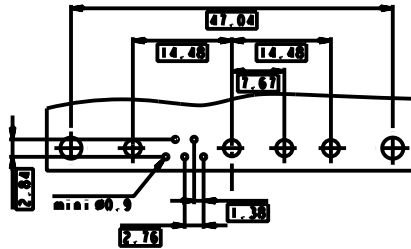
For PCB hole diameters see table 1 sheet 1



9W4

LAYOUT AND CONNECTOR DIMENSIONS

For PCB hole diameters see table 1 sheet 1

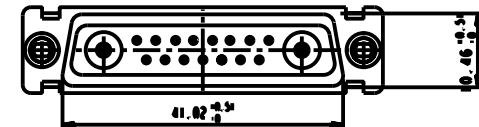
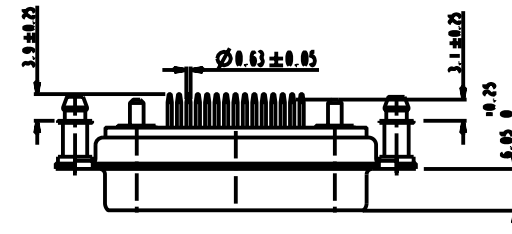
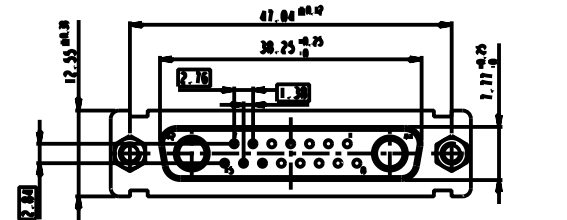
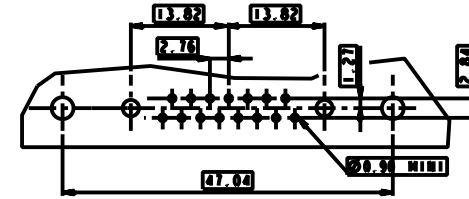


floating signal contacts

17W2

LAYOUT AND CONNECTOR DIMENSIONS

For PCB hole diameters see table 1 sheet 1



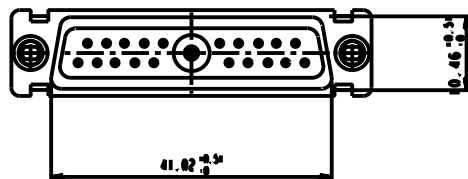
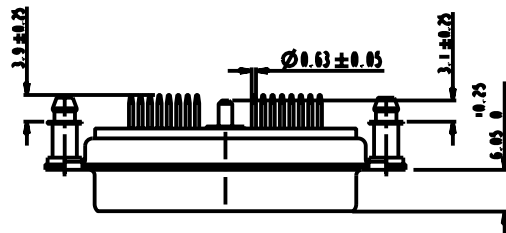
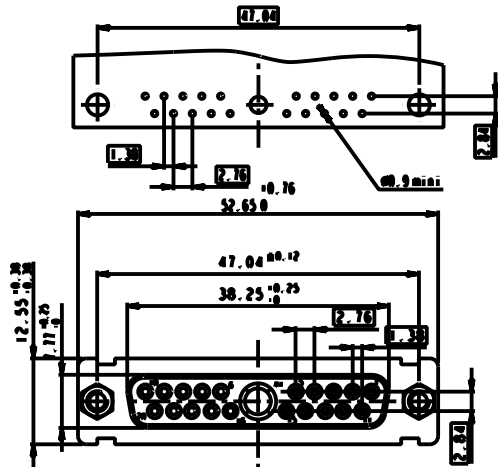
www.fciconnect.com		surface ISO 1302	tolerance std ISO 406 ISO 1101	projection mm
		TOLERANCES UNLESS OTHERWISE SPECIFIED		
Dr M PESSON	2005-10-11	ANGULAR	0.X ±0.3	size A2
Eng P LEGARE	2005-10-11	LINEAR	0.XX ±0.1	Scale 2:1
Chr		0° ±2'	0.XXX ±0.05	ECN LS07-0113
Appr		Product family	-	Spec ref
SUB FEMALE DW mixed power straight solder catalog no		title C01-8639-2302 Rev. C	CUSTOMER sheet 4 of 7	

Copyright FCI

21W1

LAYOUT AND CONNECTOR DIMENSIONS

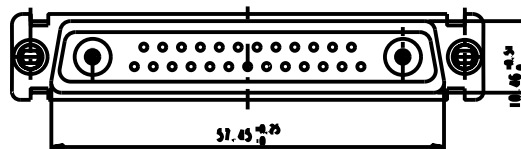
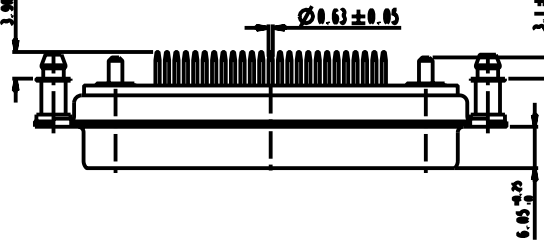
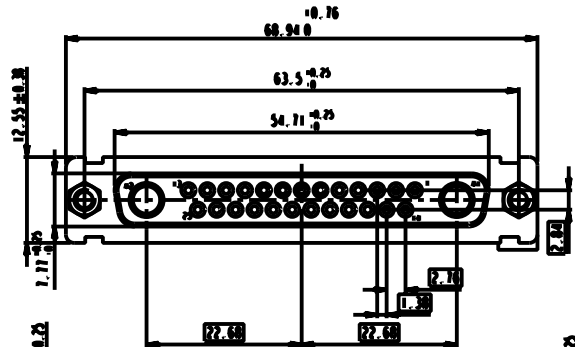
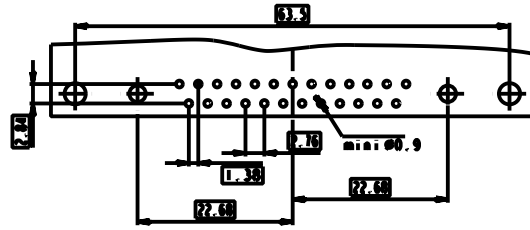
For PCB hole diameters see table 1 sheet 1



27W2

LAYOUT AND CONNECTOR DIMENSIONS

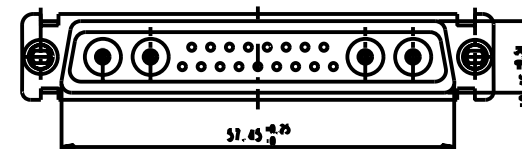
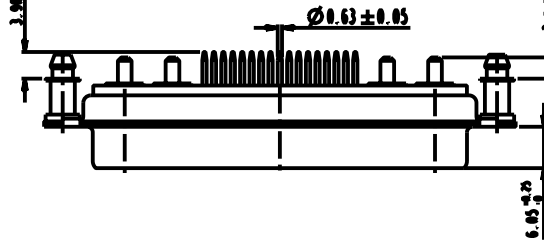
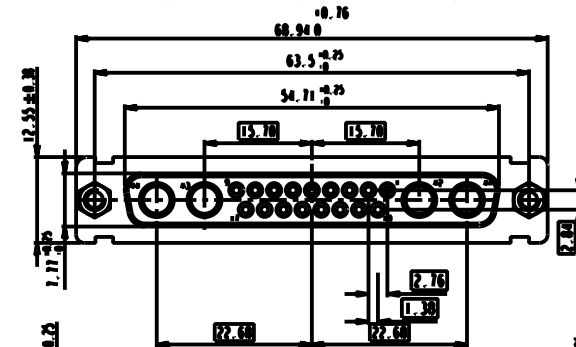
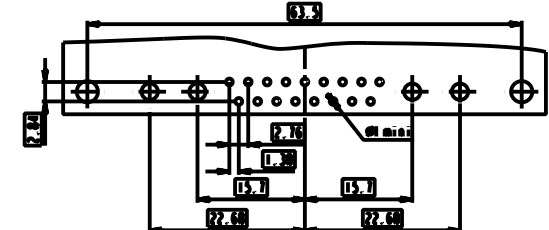
For PCB hole diameters see table 1 sheet 1



21WA4

LAYOUT AND CONNECTOR DIMENSIONS

For PCB hole diameters see table 1 sheet 1

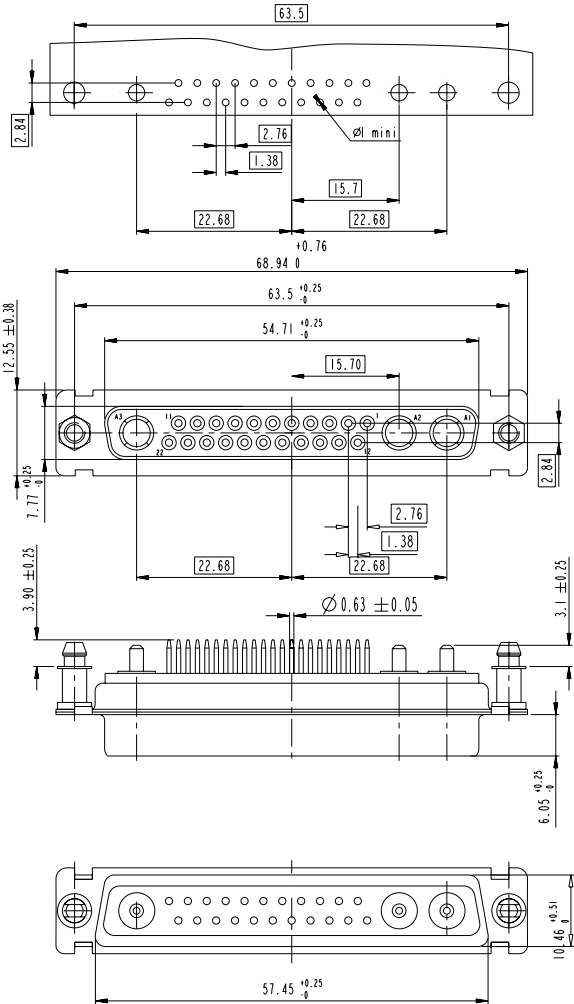


Copyright FCI

www.fciconnect.com		surface - ISO 1302	tolerance std ISO 406 ISO 1101	projection TOLERANCES UNLESS OTHERWISE SPECIFIED	mm
Dr M PESSON	2005-10-11	ANGULAR	0.X ±0.3	size	Scale
Eng P LEGARE	2005-10-11	LINEAR	0.XX ±0.1	A2	2:1
Chr		0° ±2°	0.XXX ±0.05	ECN	LS07-0113
Appr		Product family		Spec ref	
FCI		SUB FEMALE DW		arg no	Rev.
		mixed power straight solder		C01-8639-2302	C
		catalog no		CUSTOMER	sheet 5 of 7

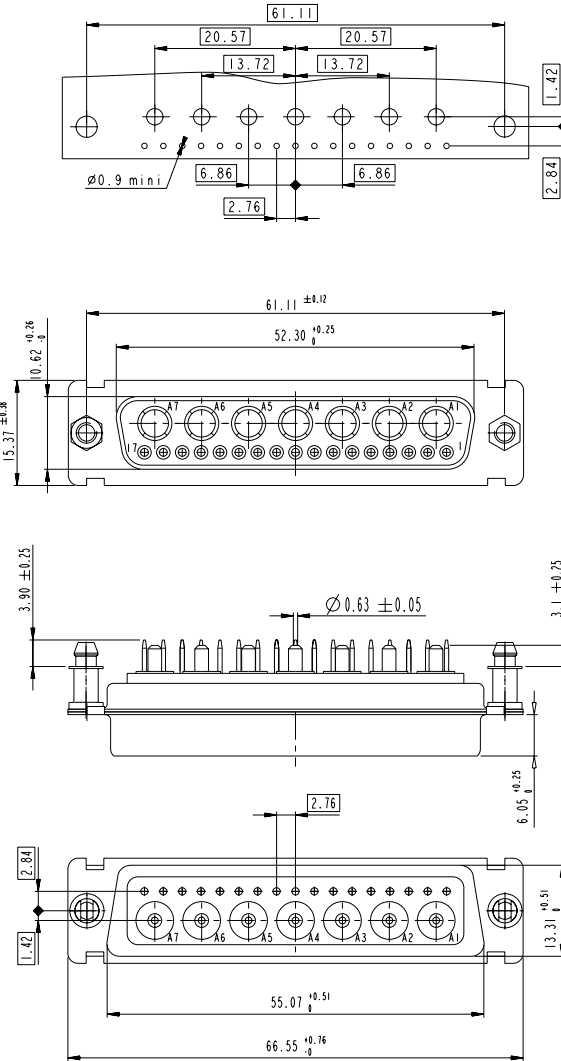
25W3

LAYOUT AND CONNECTOR DIMENSIONS
For PCB hole diameters see table I sheet I

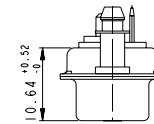


24W7

LAYOUT AND CONNECTOR DIMENSIONS
For PCB hole diameters see table I sheet I



SIDE VIEW FOR
LAYOUTS: D



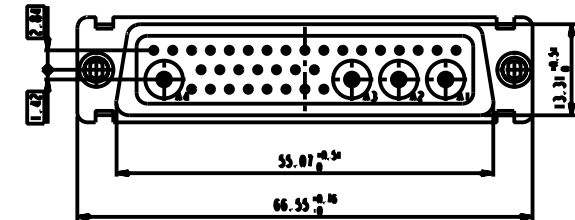
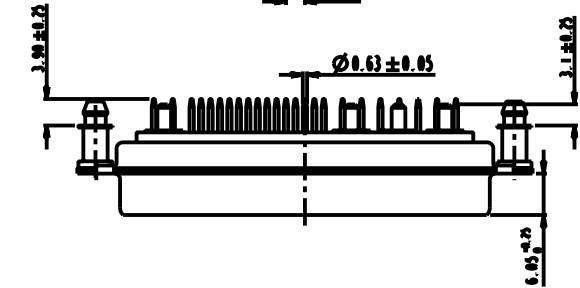
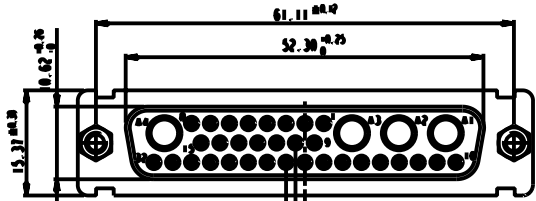
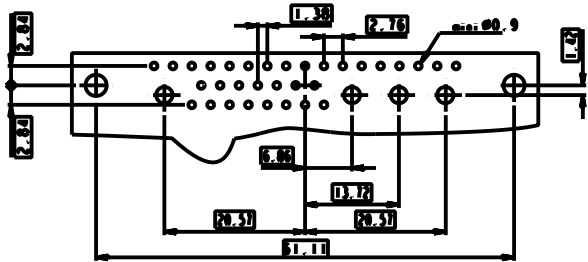
Copyright fci.

www.fciconnect.com		surface ISO 1302	tolerance std ISO 406 ISO 1101	projection mm
		TOLERANCES UNLESS OTHERWISE SPECIFIED		
Dr M PESSON	2005-10-11	ANGULAR	0.xx ±0.3	size A2 Scale 2:1
Eng P LEGARE	2005-10-11	LINEAR	0.xx ±0.1	ECN LS07-0113
Chr		° ±2'	0.xxx ±0.05	Spec ref
Appr		Product family		
SUB FEMALE DW mixed power straight solder catalog no		ang no C01-8639-2302	Rev. C	CUSTOMER sheet 6 of 7

36W4

LAYOUT AND CONNECTOR DIMENSIONS

For PCB hole diameters see table 1 sheet 1

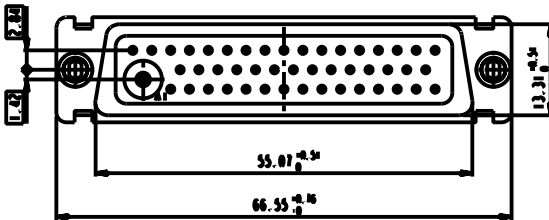
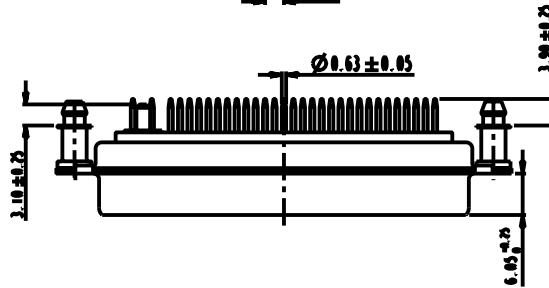
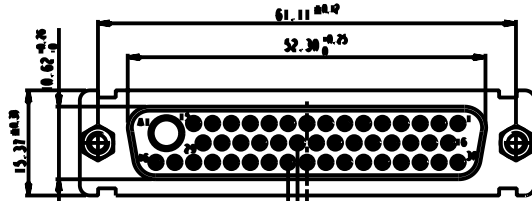
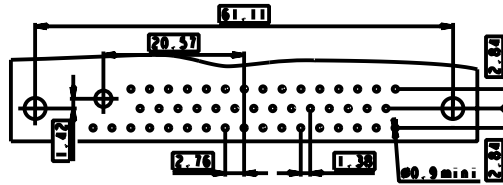


floating signal contacts

47W1

LAYOUT AND CONNECTOR DIMENSIONS

For PCB hole diameters see table 1 sheet 1



Copyright FCI

www.fciconnect.com		surface ISO 1302	tolerance std ISO 406 ISO 1101	projection mm
		TOLERANCES UNLESS OTHERWISE SPECIFIED		
Dr M PESSON	2005-10-11	ANGULAR	0.X ±0.3	size A2 Scale 2:1
Eng P LEGARE	2005-10-11	LINEAR	0.XX ±0.1	ECN LS07-0113
Chr		° ±2'	0.XXX ±0.05	Spec ref
Appr		Product family		
SUB FEMALE DW mixed power straight solder catalog no		ang no C01-8639-2302	Rev. C	CUSTOMER sheet 7 of 7