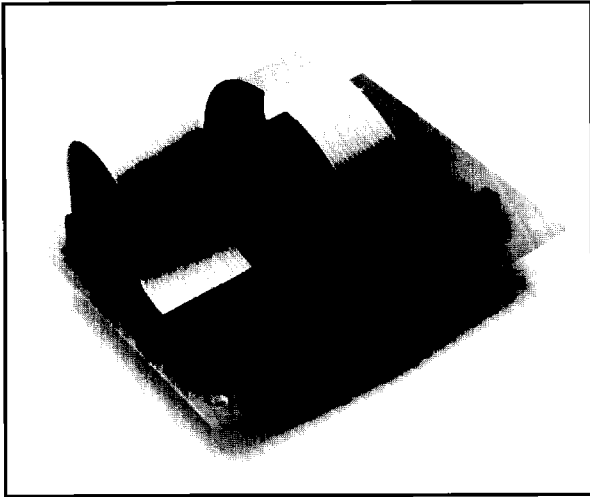


IL-FPC SERIES N-TYPE CONNECTORS

1.25mm (.049") Pitch, Connectors for FPC/FFC

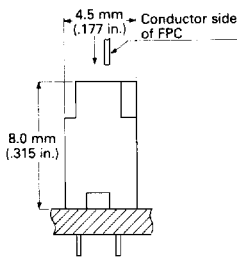


FEATURES

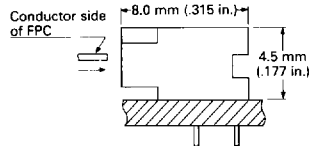
- Straight and right angle types
- Easy board mounting
- "Jogged" contact design prevents floating of the connector during the soldering operation
- Low profile design
- Designed to prevent mismatching
- Easy insertion of FPC/FFC

CONNECTOR TYPE

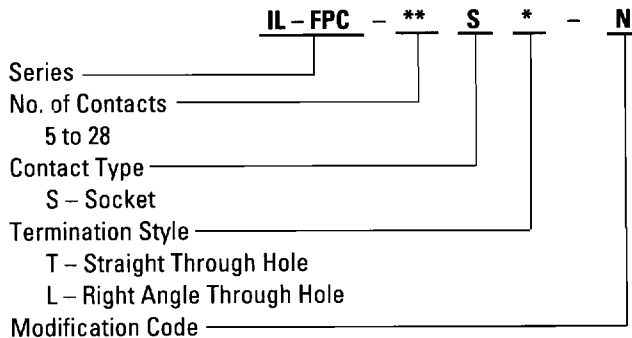
STRAIGHT TYPE



RIGHT ANGLE TYPE



ORDERING INFORMATION



IL-FPC Series N-type connectors are available in straight and right angle configurations for FPC and FFC applications.

The connectors have 1.25mm (.049") centers on the board mounting side. The "jogged" contacts are on staggered dual rows with 2.5mm (.098") spacing between rows.

The single side contact design prevents mismatching and the housing is bevelled to indicate the correct FPC/FFC direction. There is enough distance between the insertion opening and the contacts for easy mating, even for multi-conductor applications.

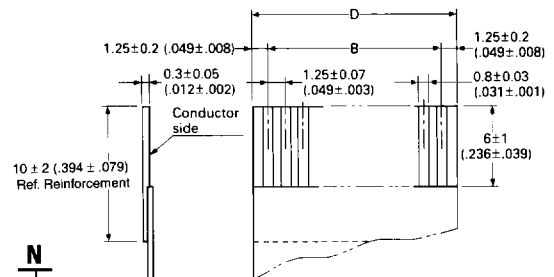
GENERAL SPECIFICATIONS

Number of Contacts	5 to 28
Contact Spacing	1.25mm (.049"), single row
Current Rating	1 Amp
Dielectric Withstanding Voltage	500 VAC r.m.s. (for one minute)
Insulation Resistance	100 megohms min.
Contact Resistance	20 milliohms max.
Operating Temperature	-40°C to +85°C
Applicable FPC	1.25mm (.049") Center 0.3 ± 0.05mm (.012" ± .002") Thick with reinforcement
Applicable PCB Thickness	0.8 to 1.6mm (.031 to .063")

MATERIALS AND FINISHES

Description	Materials/Finishes
Insulator	Glass-filled PBT (UL94V-0, Light Brown)
Socket Contact	Phosphor Bronze/Tin Plated

Applicable FPC (Ref.) 1.25mm (.049") Center
0.3mm (.012") thickness with reinforcement



Note: See next page for dimensions.

Dimensions and specifications subject to change without notice.

Hong Kong
Tel: 2723-7782
Fax: 2723-9028

Japan
03-3780-2715
03-3780-2883

Korea
2-551-8959
2-551-8958

Philippines
46-433-0276
46-433-0287

Singapore
748-1332
748-2920

Taiwan
02-555-9711
02-556-5424

Europe
1276-21717
1276-66165

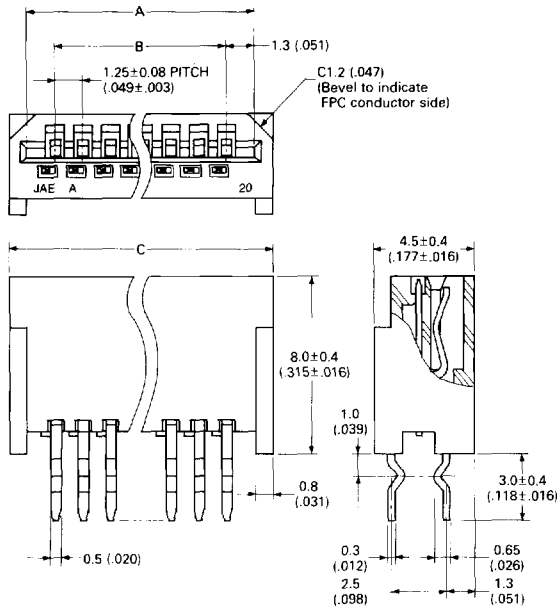
United States
949-753-2600
949-753-2699



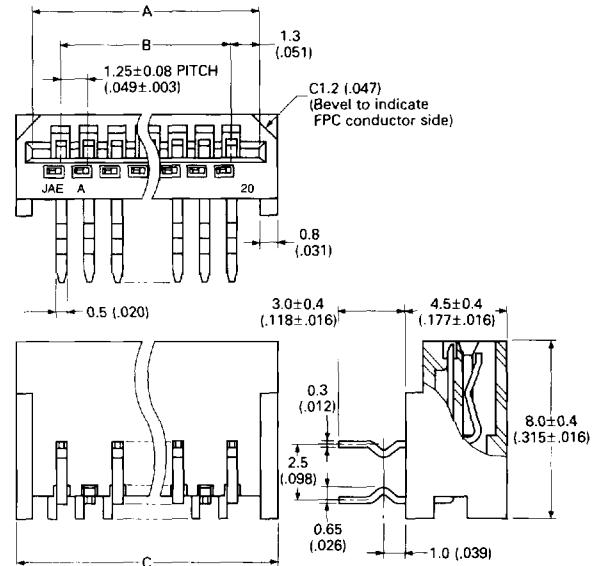
IL-FPC SERIES N-TYPE CONNECTORS

1.25mm (.049") Pitch, Connectors for FPC/FFC

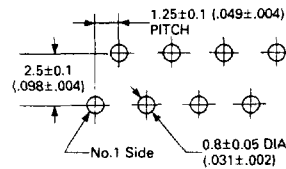
STRAIGHT TYPE



RIGHT ANGLE TYPE



PCB Hole Pattern



No. of Contacts	Part Number		A ± 0.1 (± .004)	B ± 0.15 (± .006)	C ± 0.3 (± .012)	D ± 0.15 (± .006)
	Straight Type	Right Angle Type				
5	IL-FPC- 5ST-N	IL-FPC- 5SL-N	7.6 (.299)	5 (.197)	9.2 (.362)	7.5 (.295)
6	IL-FPC- 6ST-N	IL-FPC- 6SL-N	8.85 (.348)	6.25 (.246)	10.45 (.411)	8.75 (.344)
7	IL-FPC- 7ST-N	IL-FPC- 7SL-N	10.1 (.398)	7.5 (.295)	11.7 (.461)	10.0 (.394)
8	IL-FPC- 8ST-N	IL-FPC- 8SL-N	11.35 (.447)	8.75 (.344)	12.95 (.510)	11.25 (.443)
9	IL-FPC- 9ST-N	IL-FPC- 9SL-N	12.6 (.496)	10 (.394)	14.2 (.559)	12.5 (.492)
10	IL-FPC-10ST-N	IL-FPC-10SL-N	13.85 (.545)	11.25 (.443)	15.45 (.608)	13.75 (.541)
11	IL-FPC-11ST-N	IL-FPC-11SL-N	15.1 (.594)	12.5 (.492)	16.7 (.657)	15.0 (.591)
12	IL-FPC-12ST-N	IL-FPC-12SL-N	16.35 (.644)	13.75 (.541)	17.95 (.707)	16.25 (.640)
13	IL-FPC-13ST-N	IL-FPC-13SL-N	17.6 (.693)	15 (.590)	19.2 (.756)	17.5 (.689)
14	IL-FPC-14ST-N	IL-FPC-14SL-N	18.85 (.742)	16.25 (.640)	20.45 (.805)	18.75 (.738)
15	IL-FPC-15ST-N	IL-FPC-15SL-N	20.1 (.791)	17.5 (.689)	21.7 (.854)	20.0 (.787)
16	IL-FPC-16ST-N	IL-FPC-16SL-N	21.35 (.840)	18.75 (.738)	22.95 (.904)	21.25 (.837)
17	IL-FPC-17ST-N	IL-FPC-17SL-N	22.6 (.890)	20 (.787)	24.2 (.953)	22.5 (.886)
18	IL-FPC-18ST-N	IL-FPC-18SL-N	23.85 (.939)	21.25 (.837)	25.45 (1.002)	23.75 (.935)
19	IL-FPC-19ST-N	IL-FPC-19SL-N	25.1 (.988)	22.5 (.886)	26.7 (1.051)	25.0 (.984)
20	IL-FPC-20ST-N	IL-FPC-20SL-N	26.35 (1.037)	23.75 (.935)	27.95 (1.100)	26.25 (1.033)
21	IL-FPC-21ST-N	IL-FPC-21SL-N	27.6 (1.087)	25 (.984)	29.2 (1.150)	27.5 (1.083)
22	IL-FPC-22ST-N	IL-FPC-22SL-N	28.85 (1.136)	26.25 (1.033)	30.45 (1.199)	28.75 (1.132)
23	IL-FPC-23ST-N	IL-FPC-23SL-N	30.1 (1.185)	27.5 (1.083)	31.7 (1.248)	30.0 (1.181)
24	IL-FPC-24ST-N	IL-FPC-24SL-N	31.35 (1.234)	28.75 (1.132)	32.95 (1.297)	31.25 (1.230)
25	IL-FPC-25ST-N	IL-FPC-25SL-N	32.6 (1.283)	30 (1.181)	34.2 (1.346)	32.5 (1.280)
26	IL-FPC-26ST-N	IL-FPC-26SL-N	33.85 (1.333)	31.25 (1.230)	35.45 (1.396)	33.75 (1.329)
27	IL-FPC-27ST-N	IL-FPC-27SL-N	35.1 (1.382)	32.5 (1.280)	36.7 (1.445)	35.0 (1.378)
28	IL-FPC-28ST-N	IL-FPC-28SL-N	36.35 (1.431)	33.75 (1.329)	37.95 (1.494)	36.25 (1.427)

Dimensions in mm (inches).

