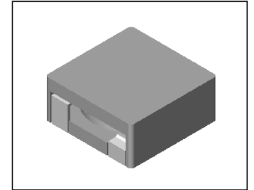


SMT Power Inductor

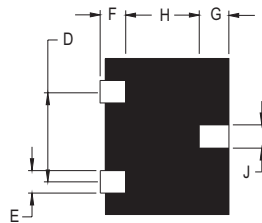
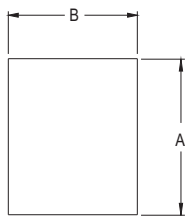
HMP1355 Type

Features

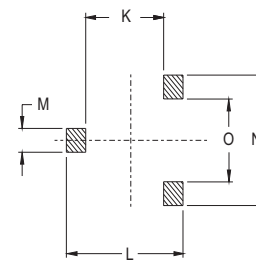
- RoHS compliant.
- Low profile, SMD type.
- High current.
- Magnetic shielded.
- High energy storage and low DCR.
- Provided with embossed carrier tape packing.
- Ideal for power source circuits, DC-DC converter, DC-AC inverters inductor applications.
- In addition to the standard versions shown here, customized inductors are available to meet your exact requirements.



Mechanical Dimension :



RECOMMENDED PAD PATTERNS



UNIT : mm/inch
 D = 7.80 / 0.307
 F = 2.50 / 0.098
 G = 2.50 / 0.098
 H = 8.00 / 0.315
 J = 3.20 / 0.126
 K = 7.00 / 0.276
 L = 14.00 / 0.551
 M = 3.70 / 0.146

UNIT : mm/inch

| PART NO. | A | B | C (MAX) | E | N | O |
|----------|---------------------------|----------------------------|--------------|--------------|---------------|--------------|
| HMP1355 | 12.70 ± 0.5 / 0.50 ± 0.02 | 13.00 ± 0.5 / 0.512 ± 0.02 | 5.50 / 0.217 | 2.40 / 0.094 | 11.20 / 0.441 | 4.40 / 0.173 |
| HMP1355S | 12.70 ± 0.5 / 0.50 ± 0.02 | 13.00 ± 0.5 / 0.512 ± 0.02 | 5.50 / 0.217 | 1.80 / 0.071 | 10.60 / 0.417 | 5.00 / 0.197 |

Electrical Characteristics : At 25°C: 100KHz, 1V

| PART NO. | L ¹ (uH) | Li (uH) MIN | DCR (mΩ) MAX | I _{sat} ² (Adc) | I _{rms} ³ (Adc) |
|---------------|------------------------|----------------|-----------------|--|--|
| HMP1355-0R4 | 0.4 | 0.32 | 0.8 | 47.0 | 45.0 |
| HMP1355-0R5 | 0.5 | 0.40 | 0.8 | 40.0 | 45.0 |
| HMP1355M-0R6 | 0.6 | 0.48 | 0.9 | 35.0 | 39.0 |
| HMP1355-1R0 | 1.0 | 0.80 | 1.6 | 30.0 | 30.0 |
| HMP1355-1R3 | 1.3 | 1.05 | 1.6 | 20.0 | 30.0 |
| HMP1355-1R5 | 1.5 | 1.20 | 1.6 | 20.0 | 30.0 |
| HMP1355-3R3 | 3.3 | 2.30 | 4.3 | 14.0 | 15.0 |
| HMP1355M-4R7 | 4.7 | 3.76 | 7.5 | 13.5 | 13.0 |
| HMP1355-4R7HS | 4.7 | 3.50 | 9.5 | 14.0 | 12.0 |
| HMP1355S-1R5 | 1.5 | 1.20 | 2.1 | 20.0 | 30.0 |
| HMP1355SM-4R7 | 4.7 | 3.76 | 9.0 | 13.5 | 11.8 |

1. Tolerance of inductance is ± 20%.
2. Isat is the DC current which cause the inductance drop to Li.
3. Irms is the DC current which cause the surface temperature of the part increase less than 45°C.
4. Operating temperature : -20°C to 105°C (including self-temperature rise).



DELTA ELECTRONICS, INC.

(TAOYUAN PLANT CPBG) 252, SAN YING ROAD, KUEISAN INDUSTRIAL ZONE, TAOYUAN SHIEN, 333, TAIWAN, R.O.C.
 TEL: 886-3-3591968; FAX: 886-3-3591991
<http://www.deltaww.com>