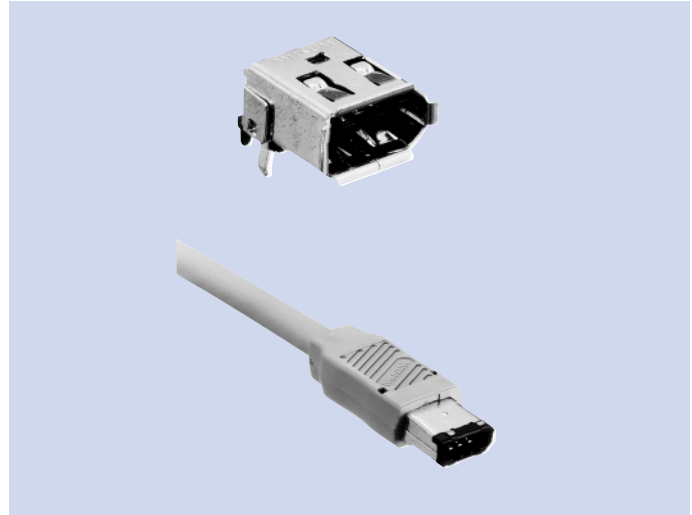


Next-Generation High-Speed Serial Interface CAM-C19, IAM-C95

FEATURES

1. These are six pin connectors conforming to the IEEE1394 standard for high-speed serial interfaces. The CAM-C19 is a board connector, and the IAM-C95 is an opposing plug connector (cable assembly).
2. Sequential construction shifts the timing of connection of power supply and signals.
3. High-reliability gold plating of contact area.
4. Withstands 1500 insert/retract cycles.



HOW TO ORDER

1. CAM-C19

C19-006-2088A

1 2 3

- 1 Series No.
- 2 No. of contacts (006 : 6pins)
- 3 Running No. assigned by us

2. IAM-C95

C95-006-2089

1 2 3 4

- 1 Series No.
- 2 No. of contacts (006 : 6pins)
- 3 Running No. assigned by us
- 4 Cable Length
(A : 500mm, B : 1,000mm, C : 1,500mm, D : 2,000mm, E : 3,000mm, F : 4,500mm)

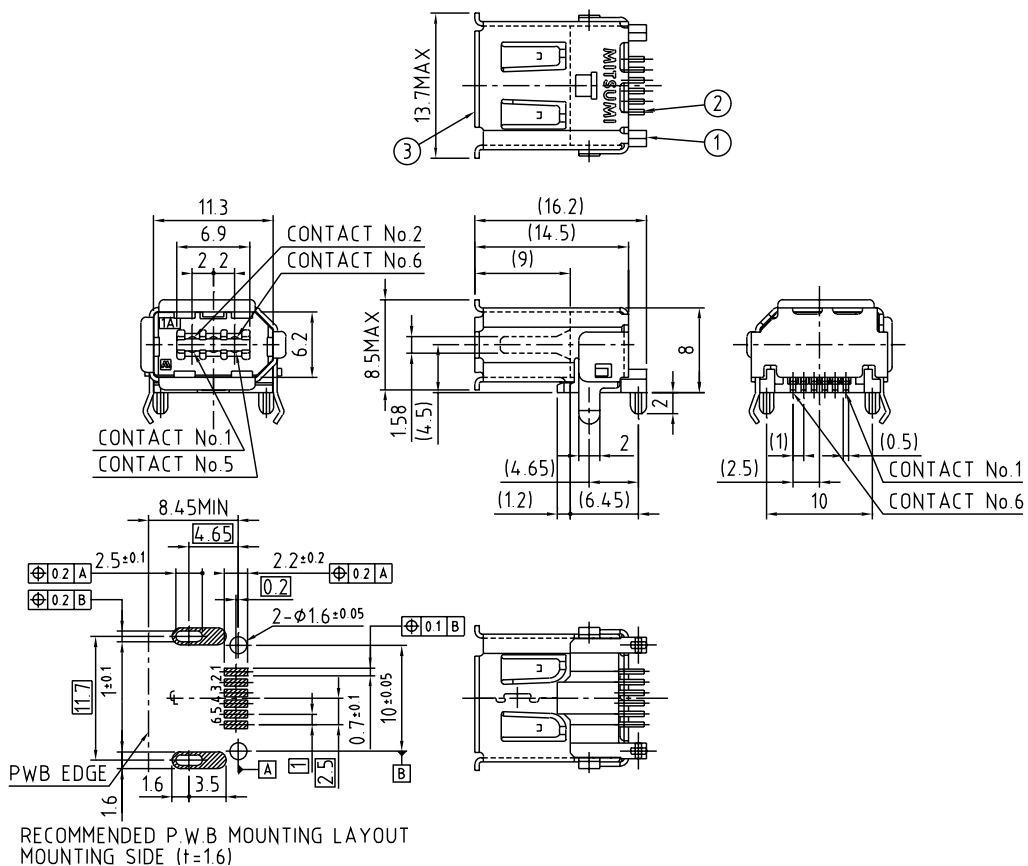
SPECIFICATIONS

ELECTRICAL CHARACTERISTICS & MECHANICAL CHARACTERISTICS

Rated Voltage	30V AC (rms)
Rated Current	1A
Withstanding Voltage	500V AC 1minute
Insulation Resistance	1,000MΩ min. (at 500V DC)
Contact Resistance	30mΩ max.
Life (Mating Cycle)	1,500

DIMENSIONS

CAM-C19



IAM-C95

