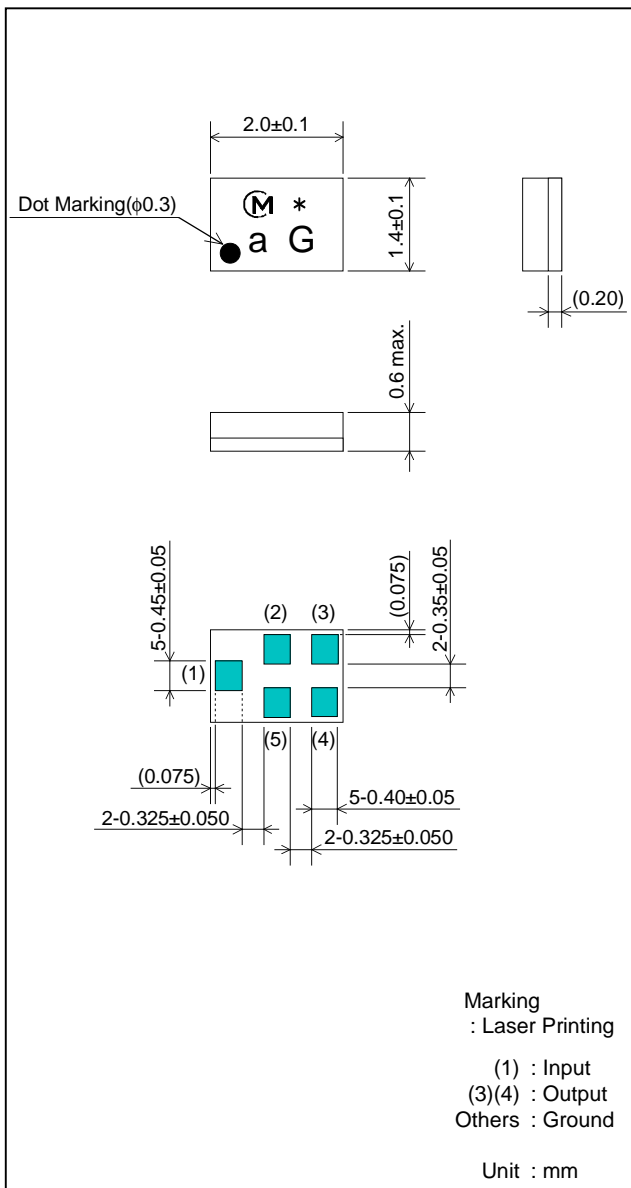


SAW FILTER FOR SCDMA1800 Rx

Murata part number : SAFED1G79FL0F00

Package Dimensions



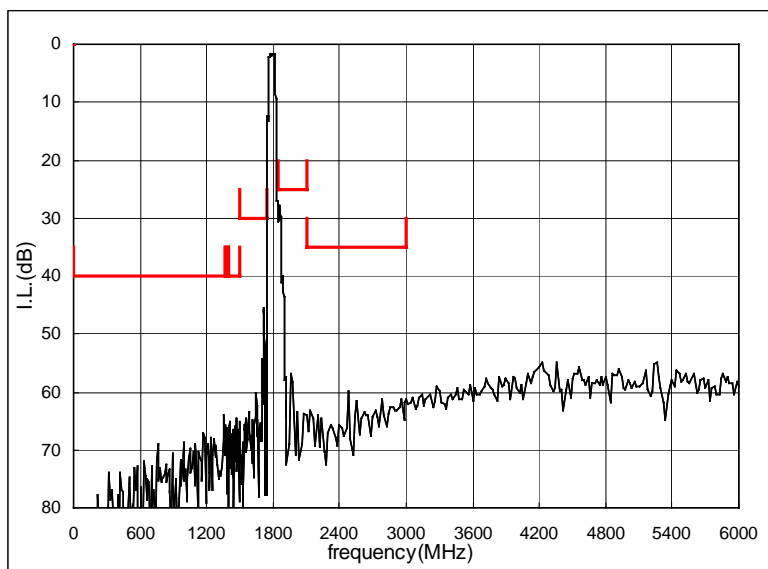
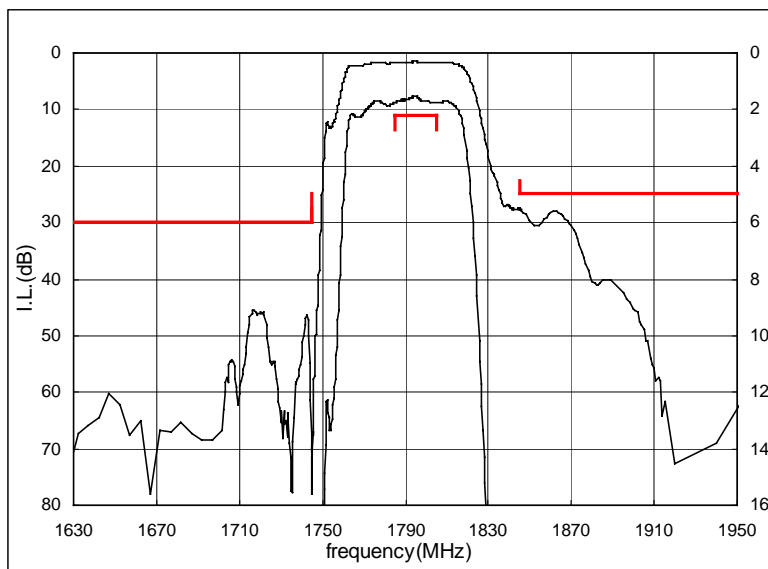
Specification

| Item | Specification | |
|---|-----------------------------|------------------|
| | -30 to +70°C | typ. |
| Nominal Center Frequency(f_c) | 1795 MHz | |
| Insertion Loss (1785 to 1805 MHz) | 2.2 dB max. | 1.8 dB |
| Absolute Attenuation | | |
| 1) 0.3 to 1377 MHz | 40 dB min. | 62 dB |
| 2) 1377 to 1397 MHz | 40 dB min. | 62 dB |
| 3) 1397 to 1500 MHz | 40 dB min. | 60 dB |
| 4) 1500 to 1745 MHz | 30 dB min. | 45 dB |
| 5) 1845 to 2100 MHz | 25 dB min. | 28 dB |
| 6) 2100 to 3000 MHz | 35 dB min. | 55 dB |
| Ripple Deviation (1785 to 1805 MHz) | 0.5 dB max. | 0.3 dB |
| VSWR (1785 to 1805 MHz) | 1.9 max. | 1.4 |
| Amplitude Balance (1785 to 1805 MHz) | ± 1.7 dB max. | ± 0.3 dB |
| Phase Balance (1785 to 1805 MHz) | 180 \pm 15 deg. | 180 \pm 3 deg. |
| Input Impedance (nominal) | 50 Ω | |
| Output Impedance (nominal) | 200 Ω //56nH | |
| Input Signal Level | 31.6mW (+15dBm), 2000 hours | |

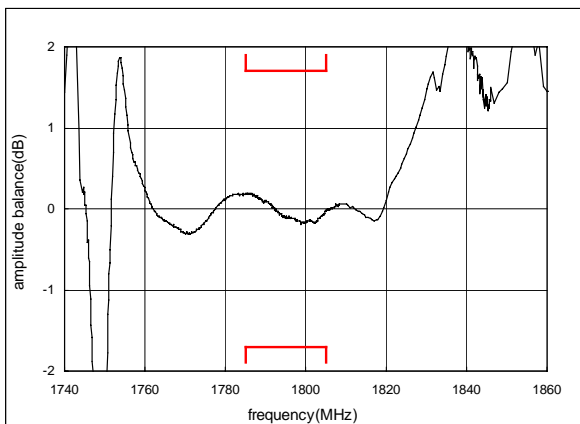
SAW FILTER FOR SCDMA1800 Rx

Murata part number : SAFED1G79FL0F00

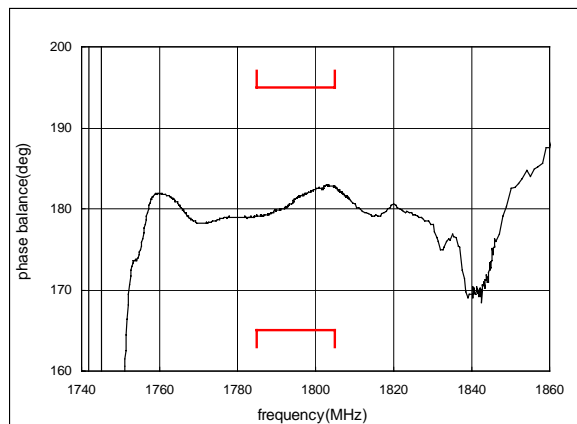
■ Frequency Performance



Amplitude balance



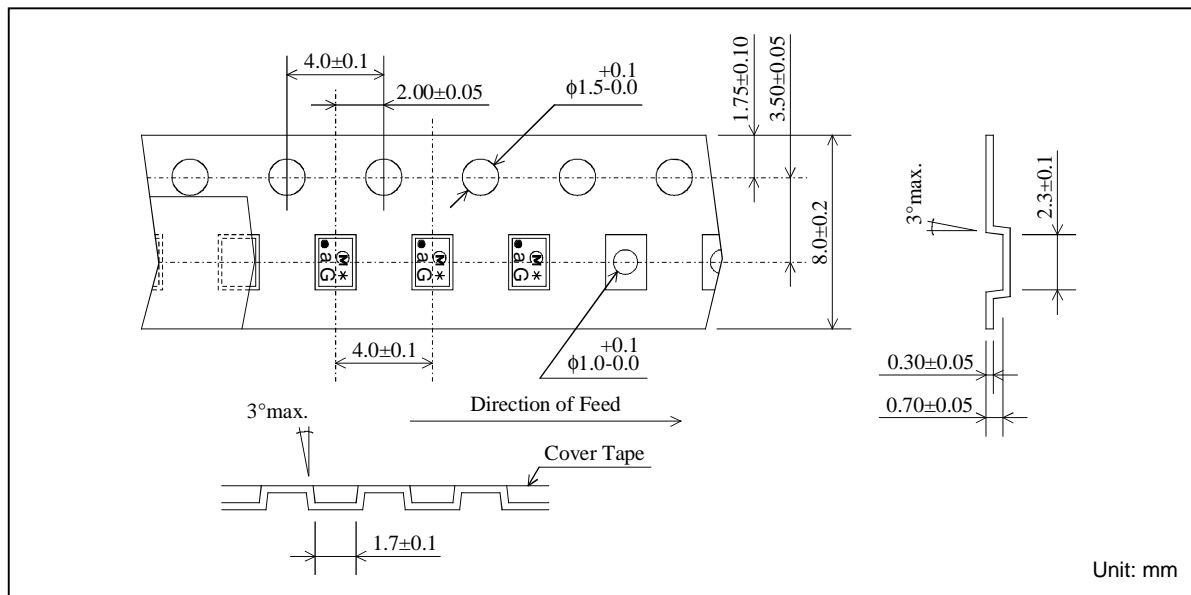
Phase balance



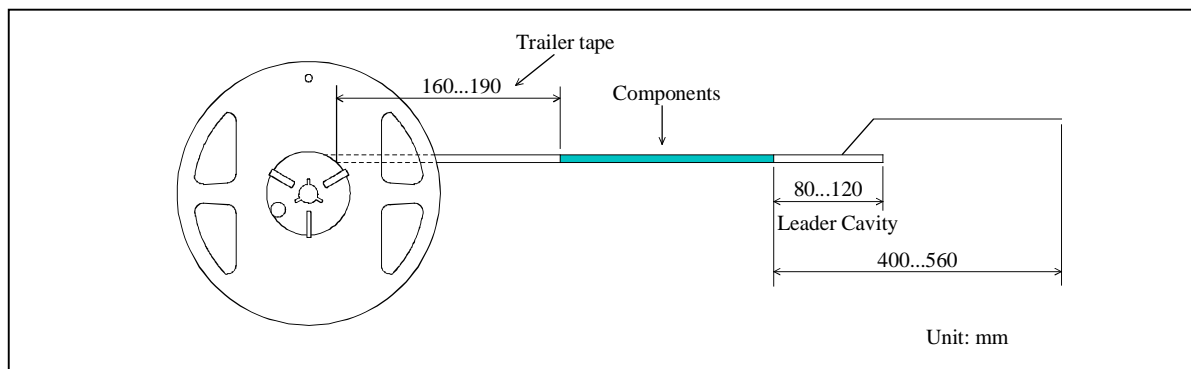
SAW FILTER FOR SCDMA1800 Rx

Murata part number : SAFED1G79FL0F00

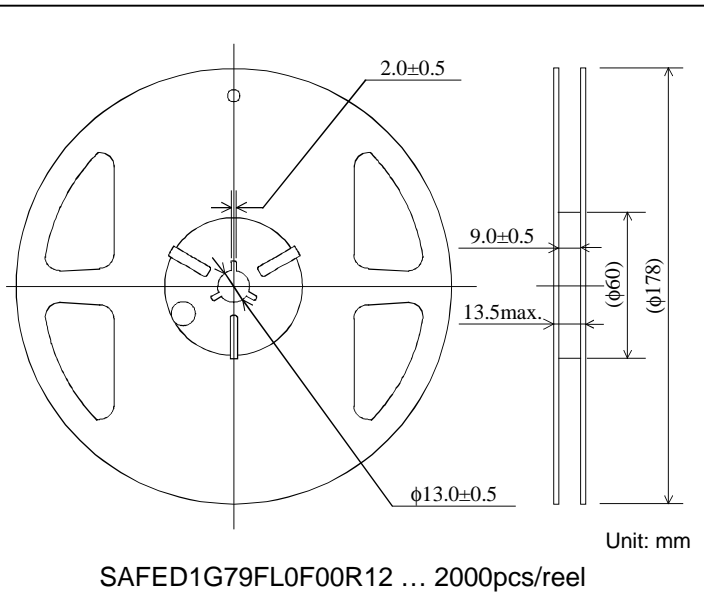
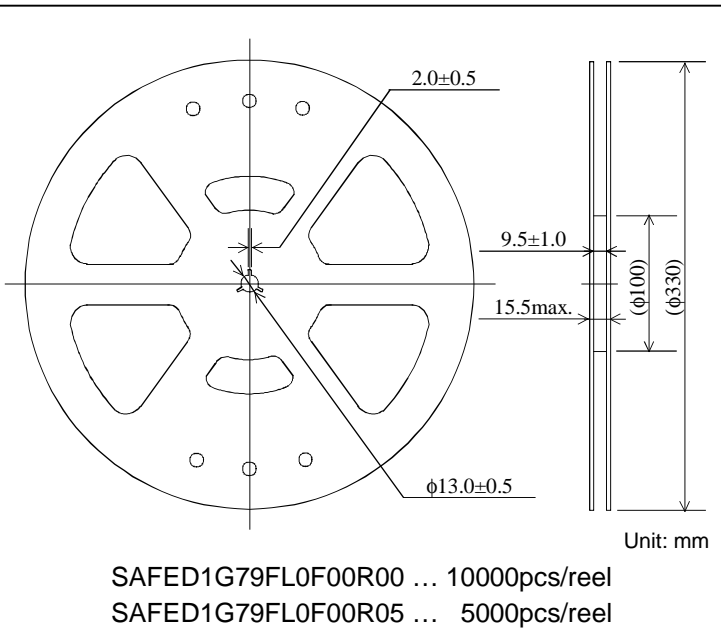
Dimensions of Carrier Tape



Dimensions of Tape



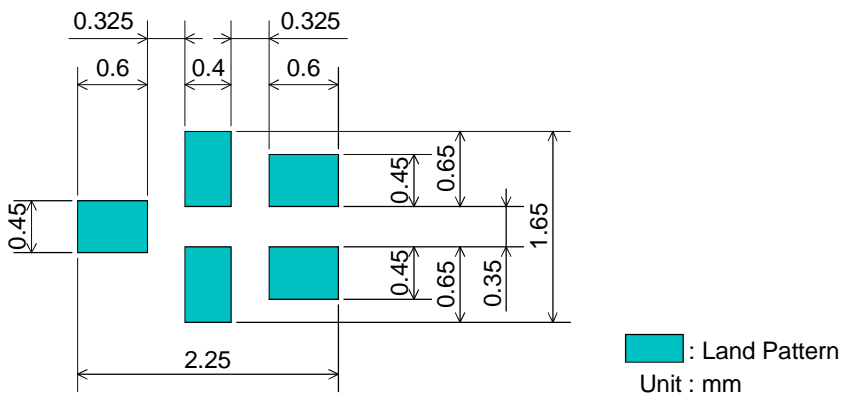
Dimensions of Reel



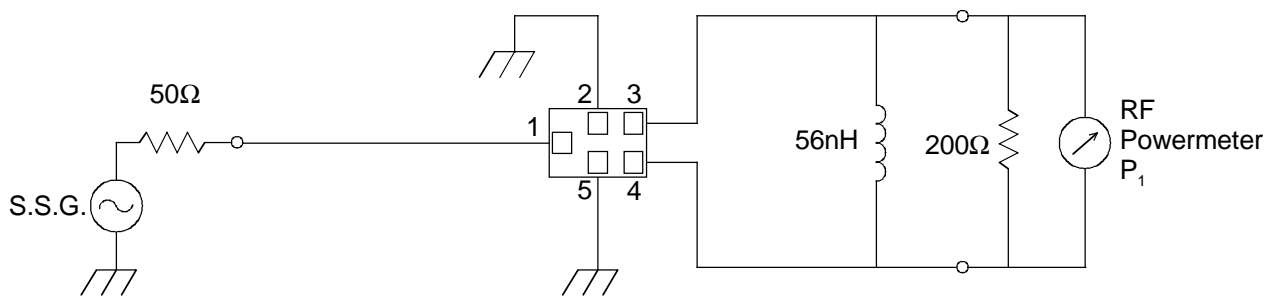
SAW FILTER FOR SCDMA1800 Rx

Murata part number : SAFED1G79FL0F00

Recommended Land Pattern



Test Circuit



- This PDF Datasheet is downloaded from the website of Murata Manufacturing Co., Ltd. Therefore, it's specifications are subject to change or our products in it may be discontinued without advance notice. Please check with our sales representatives or product engineers before ordering.
- This PDF Datasheet has only typical specifications because there is no space for detailed specifications. Therefore, please approve our product specifications or transact the approval sheet for product specifications before ordering.