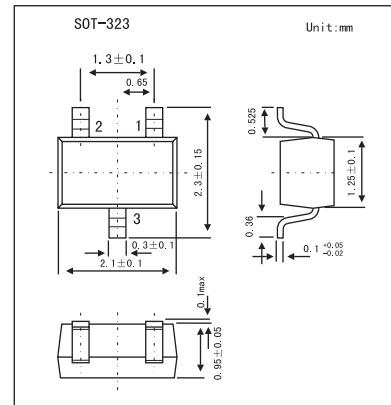


RB461F

■ Features

- Small surface mounting type. (UMD3)
- Ultra low V_F . ($V_F=0.45V$ Typ. at 0.7A)
- $I_F=0.7A$ guaranteed despite the size.



■ Absolute Maximum Ratings $T_a = 25^\circ C$

Parameter	Symbol	Limits	Unit
Peak reverse voltage	V_{RM}	25	V
DC reverse voltage	V_R	20	V
DC forward current	I_F	0.7	A
Peak forward surge current *	I_{FSM}	3	A
Junction temperature	T_j	125	$^\circ C$
Storage temperature	T_{stg}	-40 to +125	$^\circ C$

* 60Hz for 1 ∞

■ Electrical Characteristics $T_a = 25^\circ C$

Parameter	Symbol	Conditions	Min	Typ	Max	Unit
Forward voltage	V_F	$I_F = 700\text{ mA}$			0.49	V
Reverse current	I_R	$V_R=20\text{ V}$			200	μA

■ Marking

Marking	3B
---------	----