

SPECIFICATIONS

D-SUB Connector

Mechanical

Contact Engagement Force : 0.34 Kgf/ Pin max.
Contact Separation Force : 0.021 Kgf/ Pin min.
Durability : 500 Cycles

Electrical

Voltage Rating: 240V
Current Rating: 1A
Contact Resistance: 30 mΩ max.
Dielectric Withstanding Voltage: 500V AC/1 min.
Insulation Resistance: 5000MΩ

Physical

Housing: Thermoplastic, UL 94V-0 rated in PC99 Color
Contact: Copper alloyZ
Plating: See "ORDERING INFORMATION"
Solder Pad: Copper alloy
Operating Temperature: -55 to +105

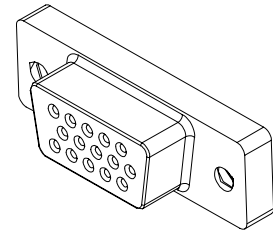
DS Series

Right Angle, SMT, Female Type

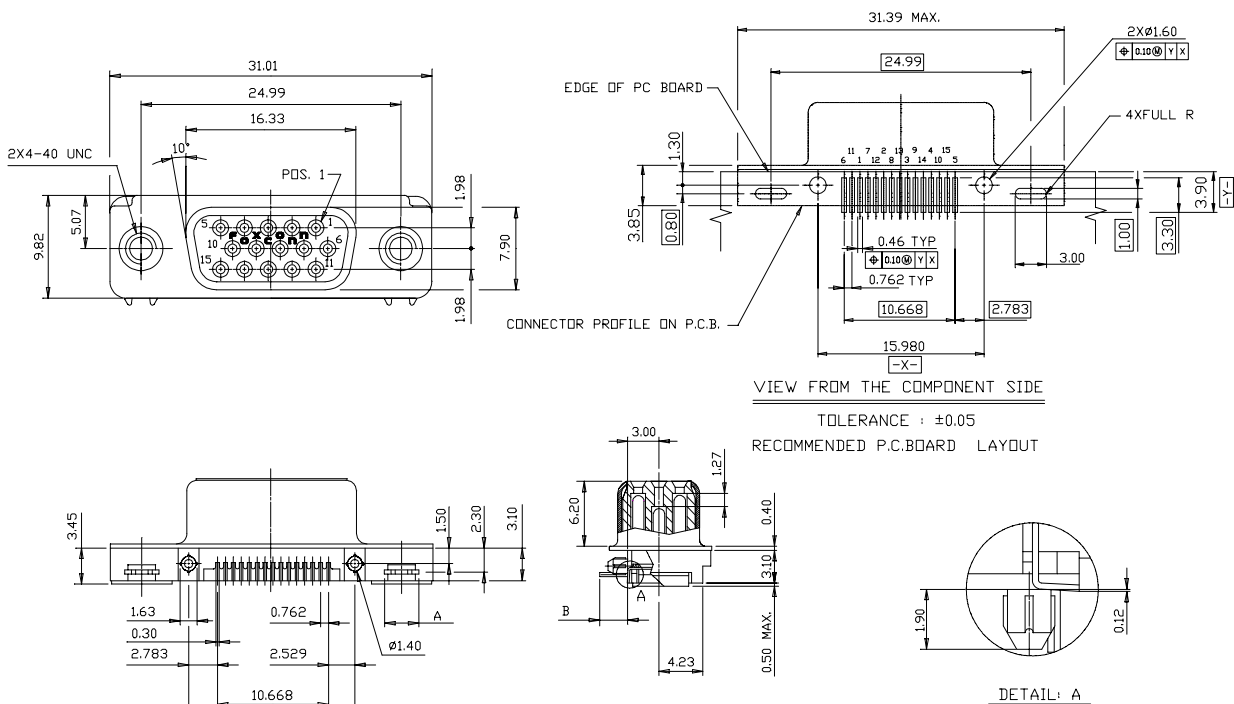
15 Pos.

Center Height 3.00 mm

Recommended PCB's Thickness 1.60mm



DRAWING



ORDERING INFORMATION

PRODUCT NO.: DS 0 1 A 9 * - * * * * - * F

D-SUB SMT SERIES

TERMINATOR TYPE

0 = STRAIGHT ANGLE

CONTACT DESIGN TYPE

1 = FEMALE

NO. OF CONTACT POSITION

A = 15 POS. HIGH DENSITY

BODY LENGTH

9 = SPECIAL TYPE

EXTENSION CODE

CONTACT PLATING

1 = GOLD FLASH

2 = 20u" GOLD PLATING

3 = 30u" GOLD PLATING

6 = 10u" GOLD PLATING

7 = 15u" GOLD PLATING

LEAD FREE CODE

F = Lead free

PACKING CODE

0 = NONE

1 = HARD TRAY

2 = HARD TRAY W/PI FILM

3 = HARD TRAY CAP

4 = SOFT TRAY

5 = SOFT TRAY PIFILM

6 = SOFT TRAY CAP

7 = TAPE&REEL

8 = TAPE&REEL PI FILM

9 = TAPE&REEL CAP

A = TUBE

B = TUBE PI FILM

C = TUBE CAP

D = BOX

E = BAG

DS01A9*-MD221-#F	3.15	2.00	DARK BLUE(G661C)
DS01A9*-MD631-#F	3.30	2.70	
PART NO.	DIM A	DIM B	PLASTICS COLOR