

Overlap Type Splices

Wires are laid side by side in the connector, and the connection is made in one crimp. These splices offer advan-

tages in simplicity of installation, and small size. One crimp completes the splice.



Nylon Insulated Splices – Overlap Type (Parallel)

Cat. No.	Pkg. Qty.	Wire Range	Wt./Lbs. Per 1000	Dimensions	
				A	B
2A20	100	22-20	2	.84	.20
RAA24	1000	22-20	2	.84	.20
2B-16	100	18-16	2	.84	.23
RBB25	1000	18-16	2	.84	.23
2C-12	50	14-12	4	.90	.28
RCC26	500	14-12	4	.90	.28

U.L. Listed E9809
Installing tools: WT2000, WT112M

High-Tech Splice-Overlap Type (Parallel)

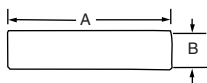
Cat. No.	Pkg. Qty.	Wire Range	Wt./Lbs. Per 1000	Dimensions	
				A	B
675-1425	1000	18-16	3	.31	.16



Non-Insulated Splices – Overlap Type

Cat. No.	Pkg. Qty.	Wire Range	Wt./Lbs. Per 1000	Dimensions	
				A	B
2A22-20	100	22-20	2	.31	.12
A1A	1000	22-20	2	.31	.12
2B18-16	100	18-16	3	.31	.16
B1B	1000	18-16	3	.31	.16
2C14-12	50	14-12	4	.37	.22
C1C	500	14-12	4	.37	.22
2D10-9	20	10-9	5	.50	.31
D1D	200	10-9	5	.50	.31
2E8-7	20	8-7	7	.50	.37
E1E	200	8-7	7	.50	.37
2F6-5 [†]	20	6-5	8	.50	.44
F1F	200	6-5	8	.50	.44
2G4-2 [†]	10	4-2	20	.69	.58
G1G	100	4-2	20	.69	.58

[†] Not U.L. Listed
U.L. Listed E9809
Installing tools – A, B, C: WT110M, WT2000, WT111M, WT112M
Installing tools – D, E, F, G: WT115A, TBM6/TBM6S



Tefzel® Insulated Butt Splice

Cat. No.	Pkg. Qty.	Wire Range	Wt./Lbs. Per 1000	Dimensions	Max. Ins Dia.
				A	
RAAT21	1000	22-18	3	1.22	.115
RBBT21	1000	16-14	3	1.22	.148
RCCT21	1000	12-10	7	1.22	.210

Installing tool – WT-145C
Tefzel® is a registered trademark of DuPont.