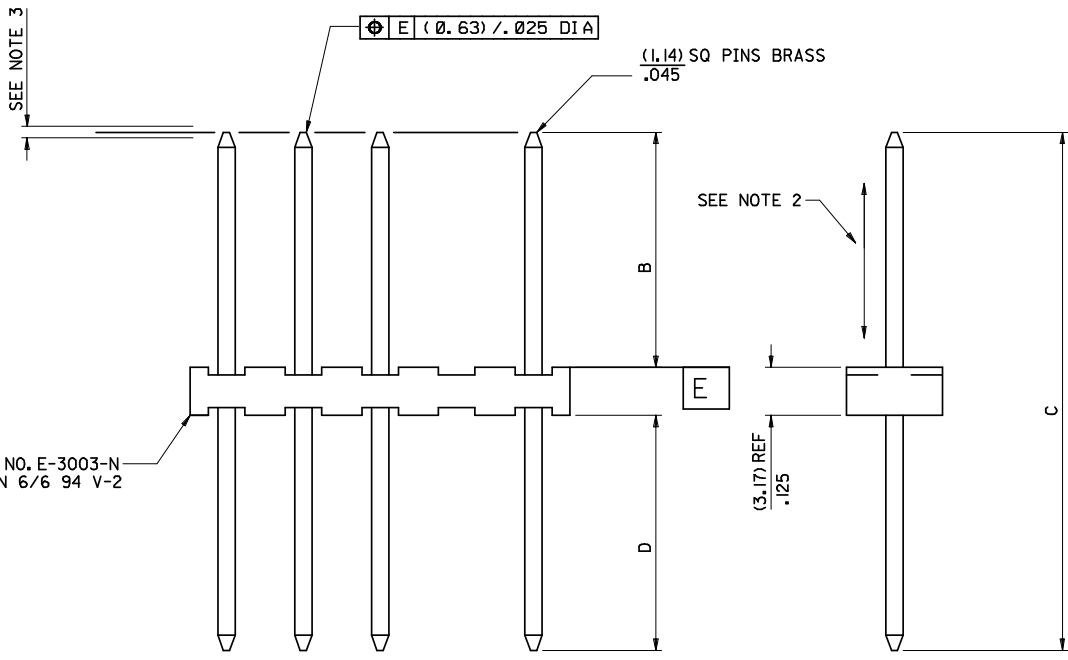
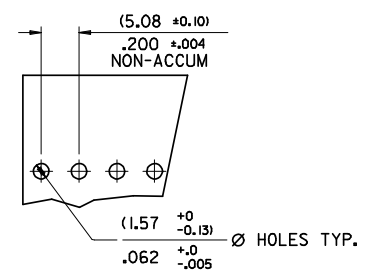


- NOTES:
1. DIMENSIONS SHOWN ARE (MM)/IN.
 2. PIN PUSH OUT FORCE 3lbs MIN
 3. RELATIVE HEIGHT OF PINS MUST NOT VARY MORE THAN .005 T.I.R
 4. PIN SOLDERABILITY PER MOLEX ENG STD NO. 152
 5. CODE LETTER PRECEDING PART NO. DESIGNATES MANUFACTURE LOCATION, i.e. I = IRELAND
 6. RECOMMENDED PCB THICKNESS 1.6MM
 7. PRODUCT SPECIFICATION: PS-99020-0087



WAFER NO. E-3003-N
MAT'L NYLON 6/6 94 V-2

3008-N *-*

BASE NO. _____

NO. OF CCTS _____

VOID LOCATION
1 - CCT NO. 1
2 - CCT NO. 2
5I- MULTIPLE VOIDS

VERSION
A - FIRST VERSION
B - SECOND VERSION
VERSION FOLLOWED BY G - GOLD

| | | | | | | | | | | | |
|--|-------------------------------|---|---------|--|---|---|---------------------------|------------------------|--------------------------------|--|--|
| DOC TYPE CHANGE EC NO: E2008-0684 DRAWN: BRUTILE 2008/06/24 CHKD: 2008/07/03 APPR: BMAGUIRE 2008/07/03 AC | QUALITY SYMBOLS ▽=0 ▽=0 | GENERAL TOLERANCES (UNLESS SPECIFIED) | | DIMENSION STYLE IN/MM | | SCALE 4:1 | DESIGN UNITS METRIC | THIRD ANGLE PROJECTION | | | |
| | | 4 PLACES ± --- ± --- 3 PLACES ± --- ± .010 2 PLACES ± 0.25 ± .016 1 PLACE ± 0.41 ± --- | mm INCH | DRAWN BY DATE DWASZKIEWICZ 2006/01/04 | TITLE WAFER FLAT, KK (5.08)/.2 CENTRES FOR (1.14)/.045 SQ PINS | | SHEET NO. 1 OF 4 | | MOLEX INCORPORATED | | |
| | | ANGULAR ±1/2° | | CHECKED BY DATE D MORIARTY 2006/01/12 | APPROVED BY DATE J DENNEHY 2006/01/12 | | MATERIAL NO. SEE CHART | | DOCUMENT NO. SDAE-3008-N*-* | | |
| | | DRAFT WHERE APPLICABLE MUST REMAIN WITHIN DIMENSIONS | | SIZE A2 | | THIS DRAWING CONTAINS INFORMATION THAT IS PROPRIETARY TO MOLEX INCORPORATED AND SHOULD NOT BE USED WITHOUT WRITTEN PERMISSION | | | | | |

| PIN PLATING : ELECTRO TIN PLATE .000300/.000200 OVER .000130/.000100 COPPER | | | | | PIN PLATING : | | | PIN PLATING : ELECTRO TIN PLATE .000300/.000200 OVER .000300/.000200 COPPER | | | | | PIN PLATING : GOLD PLATE .000030/.000020 OVER .000040/.000030 NICKEL | | | | | PIN PLATING : GOLD PLATE .000030/.000020 OVER .000040/.000030 NICKEL | | | | | PIN PLATING : GOLD PLATE .000030/.000020 OVER .000040/.000030 NICKEL | | | | |
|--|--|--------------|--|--|---------------|--|-----------|--|--|----------------------|--|--|---|--|----------------------|--|--|---|--|----------------------|--|--|---|--|----------------------|--|--|
| ASSY No. | | AE-3008-NH** | | | ASSY No. | | AE-3008-N | ASSY No. | | AE-3008-NAD** | | | ASSY No. | | AE-3008-NAG | | | ASSY No. | | AE-3008-NPG | | | ASSY No. | | AE-3008-NRG | | |
| PIN No. | | 2161-36 | | | PIN No. | | | PIN No. | | 2161-1 | | | PIN No. | | 2161-1G | | | PIN No. | | 2161-19G | | | PIN No. | | 2161-41G | | |
| PIN LENGTH C | | (30.5)/.120 | | | PIN LENGTH C | | | PIN LENGTH C | | (19.0)/.75 | | | PIN LENGTH C | | (19.0)/.75 | | | PIN LENGTH C | | (26.21)/.1032 | | | PIN LENGTH C | | (32.26)/.1270 | | |
| PRESS DIM. B | | (10.2)/.40 | | | PRESS DIM. B | | | PRESS DIM. B | | (11.30)/.445 REF | | | PRESS DIM. B | | (11.30)/.445 REF | | | PRESS DIM. B | | (18.47)/.727 REF | | | PRESS DIM. B | | (24.51)/.965 REF | | |
| DIM. D | | (17.3)/.68 | | | DIM. D | | | DIM. D | | (4.57±1.02)/.18±.040 | | | DIM. D | | (4.57±1.02)/.18±.040 | | | DIM. D | | (4.57±1.02)/.18±.040 | | | DIM. D | | (4.57±1.02)/.18±.040 | | |

| No. CCT | DIM. A | ENG. No. | PART No. | VOID LOC. | ENG. No. | PART No. | VOID LOC. | ENG. No. | PART No. | VOID LOC. | ENG. No. | PART No. | VOID LOC. | ENG. No. | PART No. | VOID LOC. | ENG. No. | PART No. | VOID LOC. | ENG. No. | PART No. | VOID LOC. | ENG. No. | PART No. | VOID LOC. | | | |
|---------|-------------------------------|-------------|------------|-----------|------------|------------|-----------|--------------|------------|-----------|--------------|------------|-----------|--------------|------------|-----------|--------------|------------|-----------|-------------|------------|-----------|-------------|------------|-----------|-------------|------------|------|
| 2 | (9.91±0.15) (.390±.006) | AE-3008-2H | NOT TOOLED | NONE | AE-3008-2 | NOT TOOLED | NONE | AE-3008-2AD | 10-74-1021 | NONE | AE-3008-2AG | 10-51-1021 | NONE | AE-3008-2PG | NOT TOOLED | NONE | AE-3008-2RG | NOT TOOLED | NONE | AE-3008-2H | NOT TOOLED | NONE | AE-3008-2H | NOT TOOLED | NONE | AE-3008-2H | NOT TOOLED | NONE |
| 3 | (14.99±0.15) (.590±.006) | -3H | | | -3 | | | -3AD | -1031 | | -3AG | -1031 | | -3PG | | | -3RG | | | -3H | | | -3H | | | -3H | | |
| 4 | (20.06±0.18) (.790±.007) | -4H | | | -4 | | | -4AD | -1041 | | -4AG | -1041 | | -4PG | | | -4RG | | | -4H | | | -4H | | | -4H | | |
| 5 | (25.15±0.20) (.990±.008) | -5H | | | -5 | | | -5AD | -1051 | | -5AG | -1051 | | -5PG | | | -5RG | | | -5H | | | -5H | | | -5H | | |
| 6 | (30.23±0.25) (1.190±.009) | -6H | | | -6 | | | -6AD | -1061 | | -6AG | -1061 | | -6PG | | | -6RG | | | -6H | | | -6H | | | -6H | | |
| 7 | (35.31±0.25) (1.390±.010) | -7H | | | -7 | | | -7AD | -1071 | | -7AG | -1071 | | -7PG | | | -7RG | | | -7H | | | -7H | | | -7H | | |
| 8 | (40.39±0.30) (1.590±.012) | -8H | | | -8 | | | -8AD | -1081 | | -8AG | -1081 | | -8PG | | | -8RG | | | -8H | | | -8H | | | -8H | | |
| 9 | (45.47±0.30) (1.790±.012) | -9H | | | -9 | | | -9AD | -1091 | | -9AG | -1091 | | -9PG | | | -9RG | | | -9H | | | -9H | | | -9H | | |
| 10 | (50.55±0.30) (1.990±.012) | -10H | | | -10 | | | -10AD | -1101 | | -10AG | -1101 | | -10PG | | | -10RG | | | -10H | | | -10H | | | -10H | | |
| 11 | (55.63±0.33) (2.190±.013) | -11H | | | -11 | | | -11AD | -1111 | | -11AG | -1111 | | -11PG | | | -11RG | | | -11H | | | -11H | | | -11H | | |
| 12 | (60.71±0.36) (2.390±.014) | -12H | | | -12 | | | -12AD | -1121 | | -12AG | -1121 | | -12PG | | | -12RG | | | -12H | | | -12H | | | -12H | | |
| 13 | (65.79±0.36) (2.590±.014) | -13H | | | -13 | | | -13AD | -1131 | | -13AG | -1131 | | -13PG | | | -13RG | | | -13H | | | -13H | | | -13H | | |
| 14 | (70.87±0.36) (2.790±.014) | -14H | | | -14 | | | -14AD | -1141 | | -14AG | -1141 | | -14PG | | | -14RG | | | -14H | | | -14H | | | -14H | | |
| 15 | (75.95±0.38) (2.990±.015) | -15H | | | -15 | | | -15AD | -1151 | | -15AG | -1151 | | -15PG | | | -15RG | | | -15H | | | -15H | | | -15H | | |
| 16 | (81.03±0.41) (3.190±.016) | -16H | | | -16 | | | -16AD | -1161 | | -16AG | -1161 | | -16PG | | | -16RG | | | -16H | | | -16H | | | -16H | | |
| 17 | (86.11±0.43) (3.390±.017) | -17H | | | -17 | | | -17AD | -1171 | | -17AG | -1171 | | -17PG | | | -17RG | | | -17H | | | -17H | | | -17H | | |
| 18 | (91.19±0.46) (3.590±.018) | -18H | | | -18 | | | -18AD | -1181 | | -18AG | -1181 | | -18PG | | | -18RG | | | -18H | | | -18H | | | -18H | | |
| 19 | (96.27±0.48) (3.790±.019) | -19H | | | -19 | | | -19AD | -1191 | | -19AG | -1191 | | -19PG | | | -19RG | | | -19H | | | -19H | | | -19H | | |
| 20 | (101.35±0.51) (3.990±.020) | AE-3008-20H | NOT TOOLED | NONE | AE-3008-20 | NOT TOOLED | NONE | AE-3008-20AD | 10-74-1201 | NONE | AE-3008-20AG | 10-51-1201 | NONE | AE-3008-20PG | NOT TOOLED | NONE | AE-3008-20RG | NOT TOOLED | NONE | AE-3008-20H | NOT TOOLED | NONE | AE-3008-20H | NOT TOOLED | NONE | AE-3008-20H | NOT TOOLED | NONE |

FOR PARTS WITH VOIDS SEE BELOW

AE-3008-6H-2 10-10-1067 2

AE-3008-3AD-2 I 10-74-1032 2

FOR DIM A
SEE ABOVE

| | | | | | | | | | | |
|--|--|-----------------|--|--------------------------------------|---|--|------------------------|--|-------------------------------|-------------------------------------|
| EC NO. SEE SHEET 1 DRWN: AOD 11/9/98 CHK: / / / / APPR: / / / / Z | DESCRIPTION MAJOR CRITICAL C= | QUALITY SYMBOLS | GENERAL TOLERANCES: (UNLESS SPECIFIED) | | SCALE : <input type="checkbox"/> mm <input checked="" type="checkbox"/> INCH | DESIGN UNITS <input type="checkbox"/> mm <input checked="" type="checkbox"/> INCH | THIRD ANGLE PROJECTION | DIMENSIONS: <input checked="" type="checkbox"/> mm <input type="checkbox"/> INCH <input type="checkbox"/> mm <input type="checkbox"/> INCH | SHT REV REVISE ON CAD ONLY | |
| | | | DRAFT WHERE APPLICABLE MUST REMAIN WITHIN DIMENSIONS | DRAWN BY & DATE AODONOVA 98/09/11 | | | | | | CHECKED BY & DATE MGOONEY 3/1/99 |
| | | | ANGULAR: ± 1/2 ° | | CAD FILENAME: S3008N3.DGN | | MATERIAL NO. SEE CHART | | DRAWING NO. SDAE-3008-N*- * | SHEET NO. 3 OF 3 |
| THIS DRAWING CONTAINS INFORMATION THAT IS PROPRIETARY TO MOLEX INCORPORATED AND SHOULD NOT BE USED WITHOUT WRITTEN PERMISSION. | | | | | | | | | | |

PART NO. SEE CHART
DWG NO. SDAE-3008-N*- *