

SOLDER TERMINALS - PRESS MOUNT

571-4161

Feed Thru - .113 (2,87) Mounting Hole Diameter

571-5198

Wrapost Feed Thru - .025" (0,64) Sq. Pins.

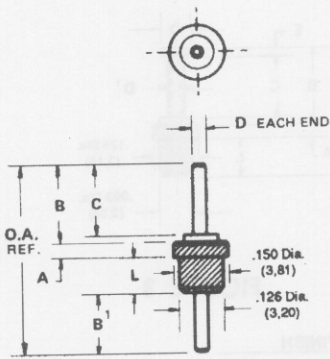


FIG. 1

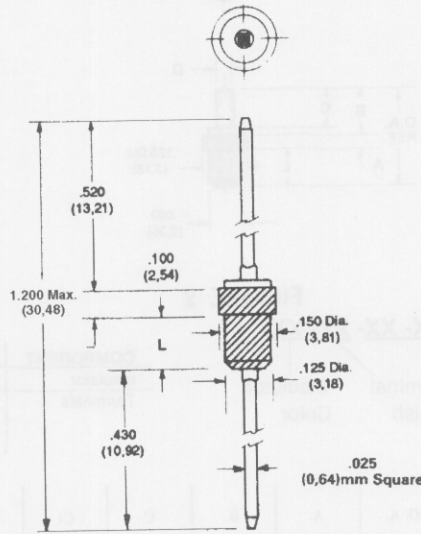


FIG. 2

FIG. 1
TERMINAL FINISH
CODED DASH No.

-01	Silver
-05	Electro-Solder
-04	Tin

Flashover measured using .032 (0,79) plate.

FIG. 2
TERMINAL FINISH
CODED DASH No.

-03	Gold
-----	------

HOW TO ORDER CODE:
571 - XXXX - XX - XX - XX

Basic Part No. Terminal Finish Insulator Color

FIG.	BASIC PART No.	L	FOR PANEL THICKNESS	O.A.	A	B	B1	C	D	FLASHOVER VRMS AT SEA LEVEL	CAPACITANCE (pF)	
1	571 - 4161	-01	.060 (1,52)	.016 (0,40) Only	.475 (12,07)	.040 (1,02)	.210 (5,33)	.165 (4,19)	.190 (4,83)	.040 (1,02)	3000	.7
		-02	.100 (2,54)	.031 (0,79) to .062 (1,59)	.515 (13,08)	See Line Drawing - Figure 2					3000	.8
2	571 - 5198	-01	.098 (2,49)	.031 (0,79) to .062 (1,59)	See Line Drawing - Figure 2					3000	.4	

INSULATOR COLOR CODED DASH NUMBERS

-19	White
-----	-------

COMPONENT	MATERIAL	FINISH
Insulator	Teflon	-
Terminals	Brass	Silver or Electro-Tin or Electro-Solder (Fig. 1) Gold over Nickel (Fig. 2)

Mechanical Tolerance Unless Otherwise Stated $\pm .005$ (0,13)

Teflon® is a registered trademark of DuPont

Mounting Instructions see reference section page 142

Can't see the exact product you need?

See Inside Front Cover for details of our custom product design and manufacture service.