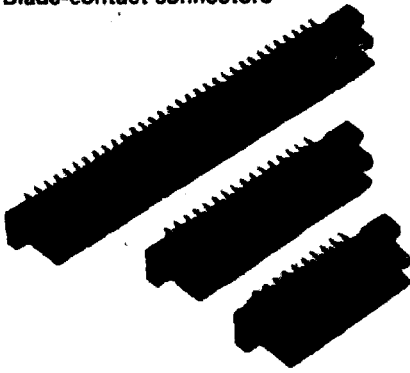
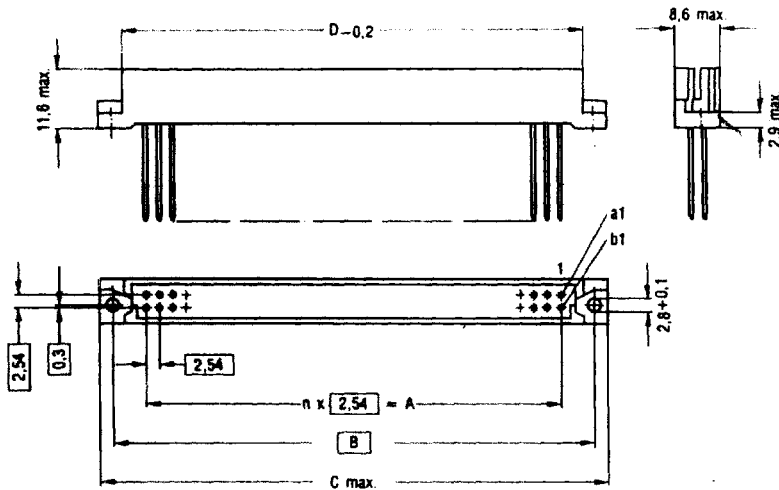


PC 612 Q Type Q

Blade-contact connectors



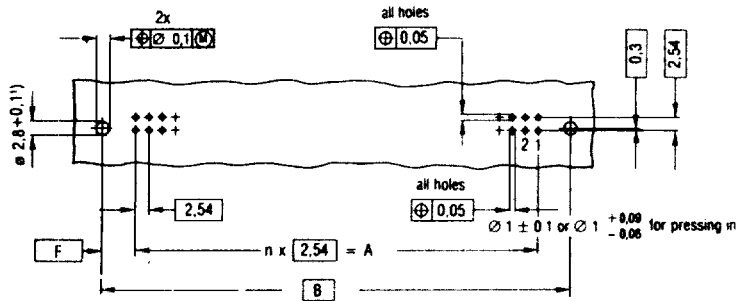
Schematic depiction in accordance with DIN



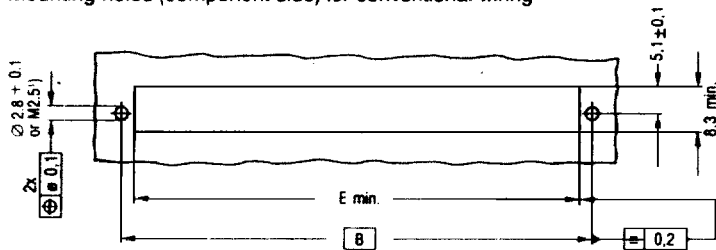
Type	Dimensions in mm				
	n	A	B	C	D
Q	31	78,74	90	95	88
Q/2	15	38,1	50	55	47,6
Q/3	9	22,86	34,76	39,76	32,12

PC 612 Q Type Q

Mounting holes (component side) for printed circuits



Mounting holes (component side) for conventional wiring



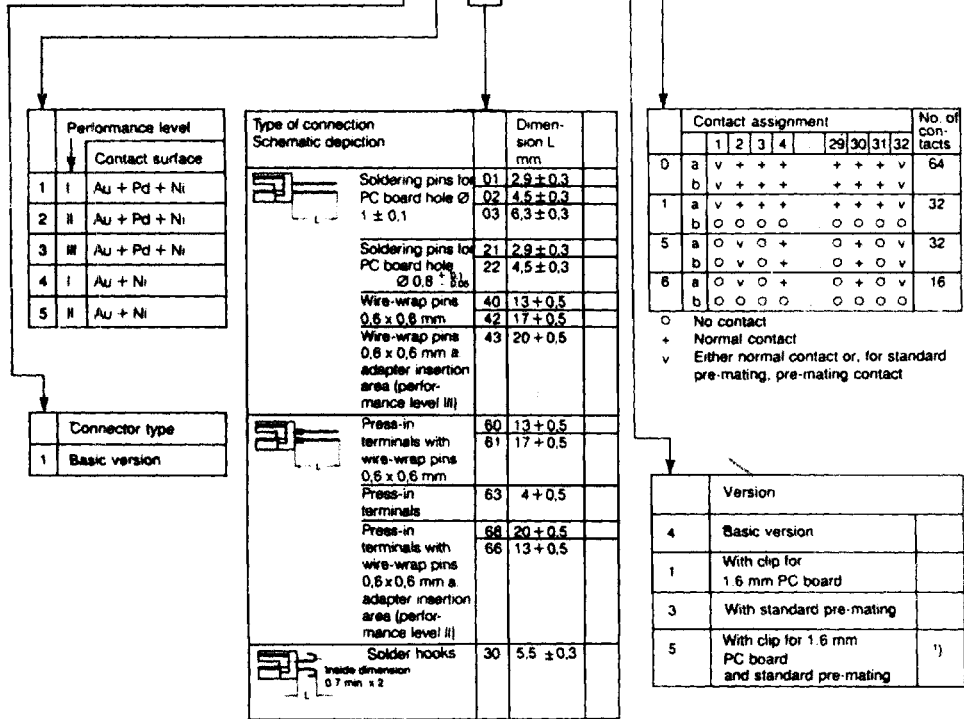
Type	n	Dimensions in mm					
		A	B	C	D	E	F
Q	31	78.74	90	95	88	85	5.63
Q/2	15	38.1	50	55	47.6	45	5.95
Q/3	9	22.86	34.76	39.76	32.12	30	5.95

- 1) Securing with securing clips or 2 hollow rivets $2.5 \times 0.3 \times \dots$ DIN 7340 or with 2 machine screws M 2.5 $\times \dots$ DIN 84 and 2 hexagon nuts M 2.5 DIN 934

PC 612 Q Type Q

Order code for blade-contact connectors

Data position: 1 2 3 4 5 6 7 8 9 10 11 12 13 14 15
V 4 2 2 5 4 - B * * * * - Q 6 * *



Preferred items

V42254-B1202-Q640

V42254-B1302-Q640

Packaging

10 ea. in blister pack

¹⁾ Please enquire

PC 612 Q Type Q/2

Order code for blade-contact connectors

Data position 1 2 3 4 5 6 7 8 9 10 11 12 13 14 15
V 4 2 2 5 4 - B ★ ★ ★ ★ - Q 3 ★ ★

2

Performance level	Contact surface	
	1 I	Au + Pd + Ni
2 II	Au + Pd + Ni	
3 III	Au + Pd + Ni	
4 I	Au + Ni	
5 II	Au + Ni	

Type of connection	Schematic depiction	Dimension L mm
Soldering pins for PC board hole $\varnothing 1 \pm 0.1$		01 2.9 ± 0.3
		02 4.5 ± 0.3
		03 6.3 ± 0.3
Soldering pins for PC board hole $\varnothing 0.8 \pm 0.05$		21 2.9 ± 0.3
		22 4.5 ± 0.3
Wire-wrap pins 0.6×0.6 mm		40 $13 + 0.5$
Wire-wrap pins 0.6×0.6 mm a adapter insertion area (performance level III)		42 $17 + 0.5$
Wire-wrap pins 0.6×0.6 mm a adapter insertion area (performance level II)		43 $20 + 0.5$
Press-in terminals with wire-wrap pins 0.6×0.6 mm		60 $13 + 0.5$
		61 $17 + 0.5$
		63 $4 + 0.5$
		68 $20 + 0.5$
Press-in terminals		66 $13 + 0.5$
Press-in terminals with wire-wrap pins 0.6×0.6 mm a adapter insertion area (performance level II)		66 $13 + 0.5$
Solder hooks		30 5.5 ± 0.3

Contact assignment	No. of contacts								
	1	2	3	4	13	14	15	16	
0 a	v	+	+	+	+	+	+	v	32
0 b	v	+	+	+	+	+	+	v	32
1 a	v	+	+	+	+	+	+	v	16
1 b	o	o	o	o	o	o	o	o	16
5 a	o	v	o	+	o	+	o	v	16
5 b	o	v	o	+	o	+	o	v	16
6 a	o	v	o	+	o	+	o	v	8
6 b	o	o	o	o	o	o	o	o	8

o No contact
 + Normal contact
 v Either normal contact or, for standard pre-mating, pre-mating contact

Version	
2	Basic version
1	With clip for 1.6 mm PC board
3	With standard pre-mating
5	With clip for 1.6 mm PC board and standard pre-mating

Connector type
1 Basic version

Preferred items
 V42254-B1302-Q320

Packaging
 10 ea. in blister pack

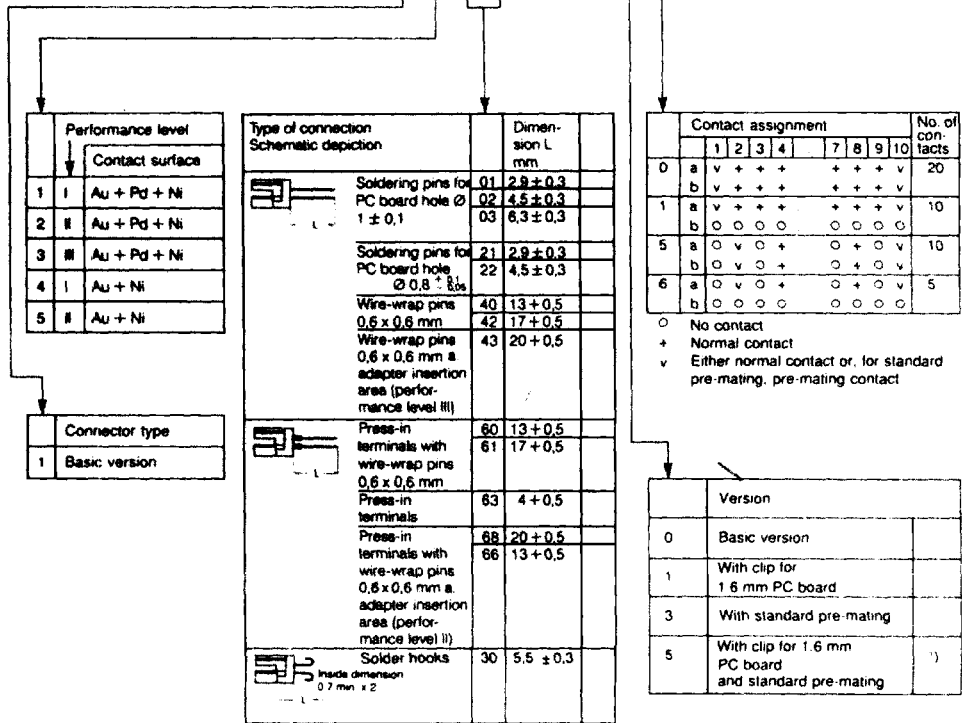
1) Please enquire

PC 612 Q Type Q/3

Order code for blade-contact connectors

Data position 1 2 3 4 5 6 7 8 9 10 11 12 13 14 15

V
4
2
2
5
4
-
B
★
★
★
★
-
Q
2
★
★



Preferred Items
V42254-B1302-Q200

Packaging
10 ea. in blister pack

¹⁾ Please enquire