

SPECIFICATIONS

Mechanical

Contact Retention Force: 1.36kg Min.

Electrical

Voltage Rating: 250V

Current Rating: 3A Per Pin Min.

Dielectric Withstanding Voltage: 1000V RMS

Insulation Resistance: 1000MW min.

Physical

Housing: High Temp UL 94V-0 Rated In Black Color

Contact: Copper Alloy

Plating: See "ORDERING INFORMATION"

Operating Temperature: -55 to +105

Head Connector

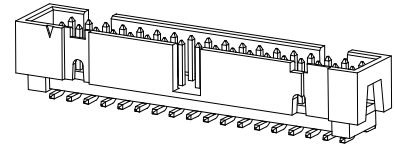
HS07 Series

R/A, SMT Type

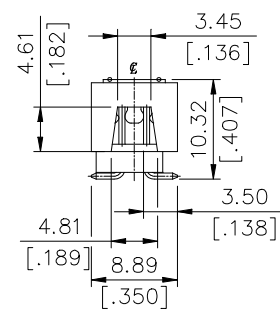
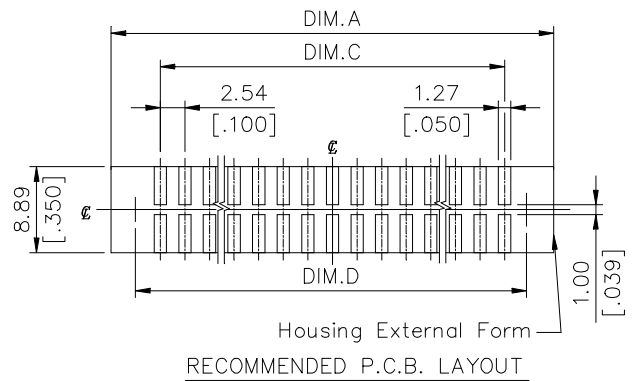
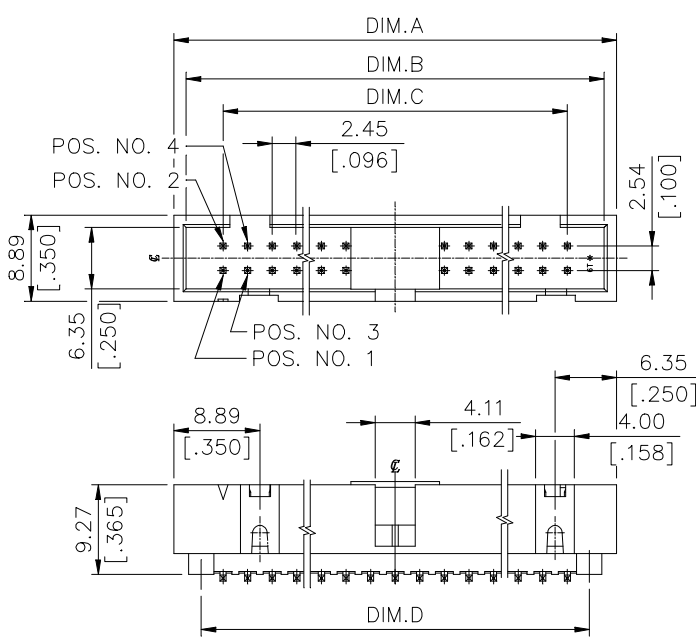
Plug

2.54 X 2.54mm

[.100] X [.100] Pitch



DRAWING



ORDERING INFORMATION

See The Attachment

HL0725*-***	50	71.12 [2.802]	68.58 [2.702]	60.96 [2.402]	65.80 [2.593]
HL0720*-***	40	58.42 [2.302]	55.88 [2.202]	48.26 [1.901]	53.10 [2.092]
HL0705*-***	10	20.32 [.801]	17.76 [.700]	10.16 [.400]	15.00 [.591]
P/N	POS.	DIM. A	DIM. B	DIM. C	DIM. D

PRODUCT NO.: H S 0 7 * * * - * * * *

