

PC board connector, spring clamp connection

Spacing: 5.00/5.08 mm

Rated cross section:
2.5 mm²

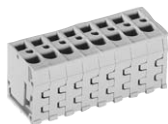
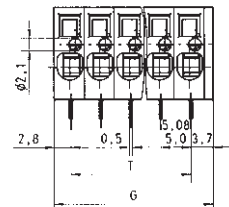
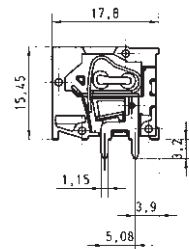
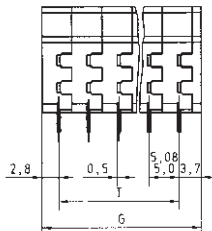
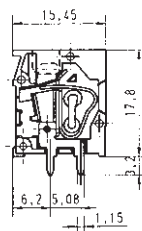
Rated current:
16 A

Connection range:
0.14 – 4.0 mm² solid/
0.14 – 2.5 mm² fine stranded

250 V/4 kV/3 – Overvoltage category III
*690 V/4 kV/2 – Overvoltage category II
1000 V/4 kV/1 – Overvoltage category I

Material:
Insulating housing: PA 66/6 gray, UL 94-V-0
Clamping body: spring clamp
Contact clips with solder pin:
tin-plated E copper

* max. 600 V for ungrounded networks or expected
overvoltage ≤ 4 kV



Solder pin 0.5 x 1.15 mm
Bore hole Ø 1.3 mm



Solder pin 0.5 x 1.15 mm
Bore hole Ø 1.3 mm



Type 8158 TOP V
wire vertical to PC board
No. 22/30 – 12 AWG
No. 22 – 12 AWG

8258 TOP V

Type 8158 TOP H
wire horizontal to PC board
No. 22/30 – 12 AWG
No. 22 – 12 AWG

8258 TOP H

Rated voltages VDE 0110
UL ratings field/factory wiring
CSA ratings – pending
Approvals (UL + CSA pending)

	Type	Part no.	Std. pack	Type	Part no.	Std. pack
Spacing: 5.00 mm						
2pole	8158 TOP V	25.780.0253.0	100	8158 TOP H	25.790.0253.0	100
	8158 TOP V	25.780.0353.0	100	8158 TOP H	25.790.0353.0	100
	8158 TOP V	25.780.0453.0	50	8158 TOP H	25.790.0453.0	50
5pole	8158 TOP V	25.780.0553.0	50	8158 TOP H	25.790.0553.0	50
	8158 TOP V	25.780.0653.0	50	8158 TOP H	25.790.0653.0	50
	8158 TOP V	25.780.0753.0	50	8158 TOP H	25.790.0753.0	50
8pole	8158 TOP V	25.780.0853.0	50	8158 TOP H	25.790.0853.0	50
	8158 TOP V	25.780.0953.0	50	8158 TOP H	25.790.0953.0	50
	8158 TOP V	25.780.1053.0	50	8158 TOP H	25.790.1053.0	50
11pole	8158 TOP V	25.780.1153.0	50	8158 TOP H	25.790.1153.0	50
	8158 TOP V	25.780.1253.0	50	8158 TOP H	25.790.1253.0	50
	8158 TOP V	25.780.1353.0	50	8158 TOP H	25.790.1353.0	50
14pole	8158 TOP V	25.780.1453.0	50	8158 TOP H	25.790.1453.0	50
	8158 TOP V	25.780.1553.0	50	8158 TOP H	25.790.1553.0	50
	8158 TOP V	25.780.1653.0	50	8158 TOP H	25.790.1653.0	50
further pole numbers upon request						
Spacing: 5.08 mm						
2pole	8258 TOP V	25.781.0253.0	100	8258 TOP H	25.791.0253.0	100
	8258 TOP V	25.781.0353.0	100	8258 TOP H	25.791.0353.0	100
	8258 TOP V	25.781.0453.0	50	8258 TOP H	25.791.0453.0	50
5pole	8258 TOP V	25.781.0553.0	50	8258 TOP H	25.791.0553.0	50
	8258 TOP V	25.781.0653.0	50	8258 TOP H	25.791.0653.0	50
	8258 TOP V	25.781.0753.0	50	8258 TOP H	25.791.0753.0	50
8pole	8258 TOP V	25.781.0853.0	50	8258 TOP H	25.791.0853.0	50
	8258 TOP V	25.781.0953.0	50	8258 TOP H	25.791.0953.0	50
	8258 TOP V	25.781.1053.0	50	8258 TOP H	25.791.1053.0	50
11pole	8258 TOP V	25.781.1153.0	50	8258 TOP H	25.791.1153.0	50
	8258 TOP V	25.781.1253.0	50	8258 TOP H	25.791.1253.0	50
	8258 TOP V	25.781.1353.0	50	8258 TOP H	25.791.1353.0	50
14pole	8258 TOP V	25.781.1453.0	50	8258 TOP H	25.791.1453.0	50
	8258 TOP V	25.781.1553.0	50	8258 TOP H	25.791.1553.0	50
	8258 TOP V	25.781.1653.0	50	8258 TOP H	25.791.1653.0	50
further pole numbers upon request						
Accessories						
Adhesive marking strips	1 – 12 (100 x)	04.007.4089.0	1		04.007.4089.0	1
	13 – 24 (100 x)	04.007.4189.0	1		04.007.4189.0	1
Marking upon request						
Test plug		Z5.553.2921.0	10		Z5.553.2921.0	10