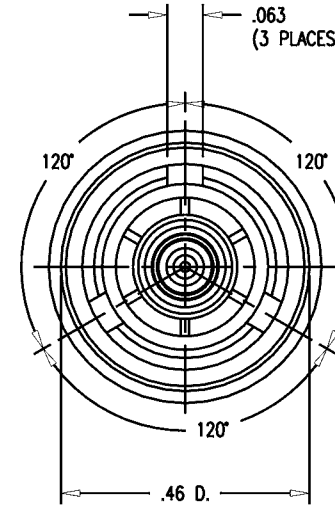
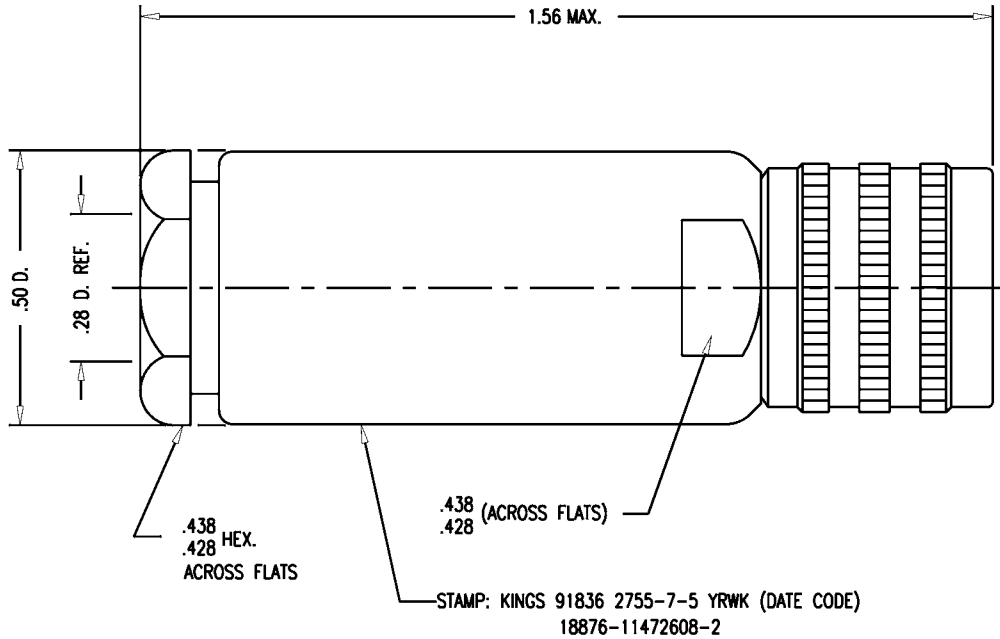


# GSD



**NOTES:**

1. FOR USE WITH RAYTHEON 11464213 AND M17/116-RG 307 CABLE.
2. FOR CABLING INSTRUCTIONS SEE CP-1305.
3. INTERFACE MEETS REQUIREMENTS OF KER-10073
4. GROUPS A AND B INSPECTION SHALL BE PERFORMED IN ACCORDANCE WITH THE REQUIREMENTS OF MIL-PRF-49142.
5. MARK PACKAGE: KINGS 91836 2755-7-5 YRWK (DATE CODE) 18876-11472608-2
6. MATERIALS:
  - INSULATORS-TEFLON, ASTM-D-4894
  - GASKETS-FLUROSILICONE RUBBER, SAE/AMS-R-25988
  - INTERMEDIATE CONTACT } BER. COP., ASTM-B-196
  - SPRING WASHER }
  - ALL OTHER METAL PARTS-BRASS, ASTM-B16
7. FINISHES:
  - CENTER & INTERMEDIATE CONTACTS-HARD GOLD PLATE PER MIL-G-45204
  - ALL OTHER METAL PARTS- SILVER PLATE PER ASTM-B700, TYPE 2, GRADE A CLASS S
8. ELECTRICAL CHARACTERISTICS:
  - NOMINAL IMPEDANCE: NON-CONSTANT
  - VOLTAGE RATING - 400 VRMS
  - FREQUENCY RANGE - DC TO 500 MHZ

2755-7-5

**REVISIONS**

ISSUE	CHANGES
0	ER 38700 JLA 10/24/02
1	CN 38720 E JLA 11/12/02
2	CN 38729 E JLA 12/02/02
3	CN 38819 C BDH 04/01/03
4	CN 38867 C DCT 6/11/3
5	CN 38890 C HVN 07/31/03
6	CN 39098 E TML 06/11/04
7	CN 39144 A JPK 08/24/04

2755-7-5S

SCALE 4:1

APPROX SURFACE AREA

WES: E-17653

USED ON

REF: ARMY DWG # 11472608-2 REV. E

PLUG, 3 SLOT, SDB

DRAWN JLA DATE 09/25/02

DESIGN JLA DATE 09/25/02

APPR. DATE

**KINGS**  
ELECTRONICS CO., INC.  
ROCK HILL, SOUTH CAROLINA 29730

# GSD

2755-7-5