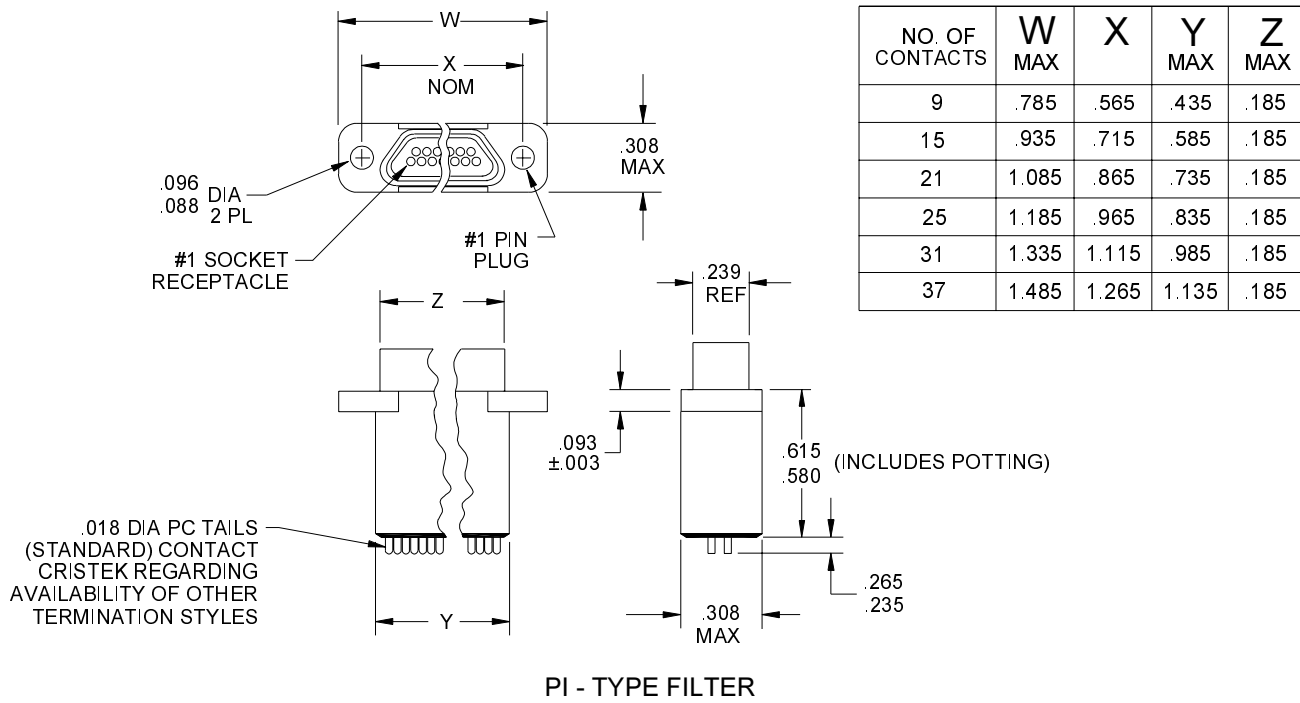


NO. OF CONTACTS	W MAX	X	Y MAX	Z MAX
9	.785	.565	.386	.185
15	.935	.715	.536	.185
21	1.085	.865	.686	.185
25	1.185	.965	.786	.185
31	1.335	1.115	.936	.185
37	1.485	1.265	1.086	.185

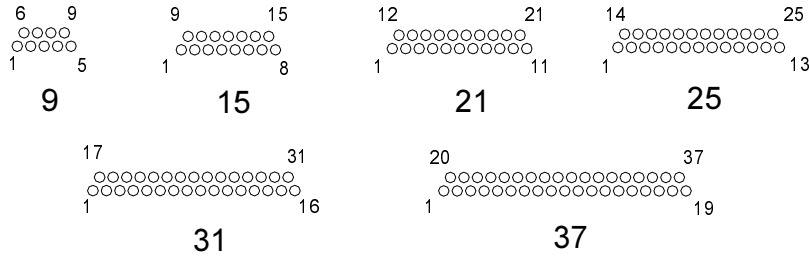


NO. OF CONTACTS	W MAX	X	Y MAX	Z MAX
9	.785	.565	.435	.185
15	.935	.715	.585	.185
21	1.085	.865	.735	.185
25	1.185	.965	.835	.185
31	1.335	1.115	.985	.185
37	1.485	1.265	1.135	.185

CRISTEK INTERCONNECTS, INC. www.cristek.com 1301 S. Lewis St. Anaheim, CA 92805 Phone: (714) 618-2000 FAX: (714) 535-4897	TITLE	DWG. NO.		
	MICRO-D METAL SHELL FILTERED CONFORMING TO M83513		FMD	
	FILENAME	67720	SHT 1 OF 2	REV E
ADS-FMD-1		TOLERANCE: .XXX ±.005 .XX ±.01 ANGLE ±1°		

6.5 FILTER CONNECTORS / M83513

MATING FACE - RECEPTACLE



FMD - # # - # # 5 # ##

- FILTERED MICRO-D
- GENDER
 - 1 = RECEPTACLE, SOCKET CONTACTS
 - 2 = PLUG, PIN CONTACTS
- NUMBER OF CONTACTS
 - A = 9 D = 25
 - B = 15 E = 31
 - C = 21 F = 37
- SHELL HARDWARE
 - 0 = NO JACKPOST
 - 1 = JACKPOST PER MIL-C-83513/5-07 SIZES 9 THRU 37
- SHELL FINISH
 - C = CADMIUM
 - N = NICKEL
- TERMINATIONS
 - 5 = .265
 - = .375
- FILTER TYPE
 - C = C TYPE
 - P = PI TYPE
- FILTER CHARACTERISTICS
 - L = LOW RANGE
 - M = MID RANGE
 - T = STANDARD RANGE
 - H = HIGH RANGE
 - VH = VERY HIGH RANGE

1. MATERIALS:

SHELL - ALUMINUM PER QQ-A-200/8, QQ-A-250/11, OR QQ-A-591
 INSULATOR - DIALLYL PHTHALATE PER MIL-M-14, TYPE SDG-F
 PIN CONTACT - BERYLLIUM COPPER
 SOCKET CONTACT - COPPER ALLY
 INTERFACIAL SEAL - FLUOROSILICONE BLEND

2. FINISH:

SHELL - CADMIUM PER QQ-P-416, TYPE II, CLASS 3 OVER
 ELECTROLESS NICKEL PER AMS 2404 - (PREFERRED).
 OR ELECTROLESS NICKEL PER AMS 2404.
 CONTACT - GOLD PER MIL-G-45204, TYPE II, GRADE C,
 CLASS I OVER NICKEL PER QQ-N-290.

3. SPECIFICATIONS:

CURRENT RATING ----- 3 AMPS MAX
 TEMPERATURE RATING ----- -55° C TO +125° C
 INSULATION RESISTANCE ----- 1000 MEGOHMS MIN
 DWV AT SEA LEVEL ----- 100 VDC
 CONTACT RESISTANCE ----- 8 MILLIOHMS AT 2.5 AMPS
 LOW LEVEL CONTACT ----- 10 MILLIOHMS MAX
 RESISTANCE
 CONTACT RETENTION ----- 5 lb MINIMUM AXIAL LOAD
 ENGAGEMENT FORCE ----- 6 oz MAX
 SEPERATION FORCE ----- 0.5 oz MIN

4. ADDITIONAL INFORMATION:

CONSULT CRISTEK FOR OTHER CONFIGURATIONS.

CRISTEK INTERCONNECTS, INC. www.cristek.com 1301 S. Lewis St. Anaheim, CA 92805 Phone: (714) 618-2000 FAX: (714) 535-4897	TITLE	DWG. NO.		
	MICRO-D METAL SHELL FILTERED CONFORMING TO M83513	FMD		
FILENAME	67720	SHT 2 OF 2	REV E	
ADS-FMD-2	TOLERANCE: .XXX ±.005 .XX ±.01 ANGLE ±1°			