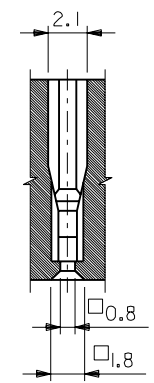
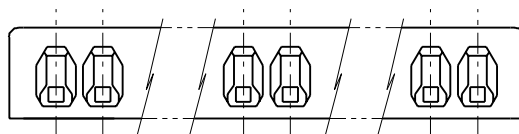
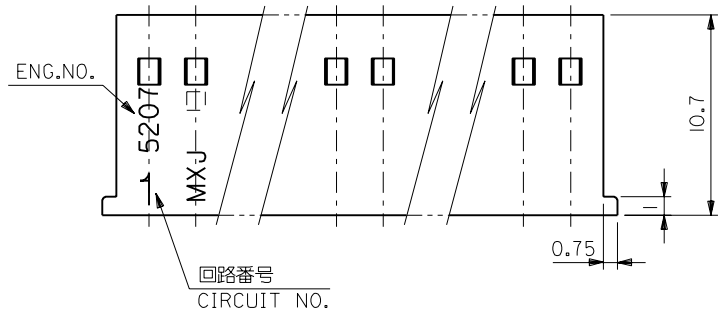
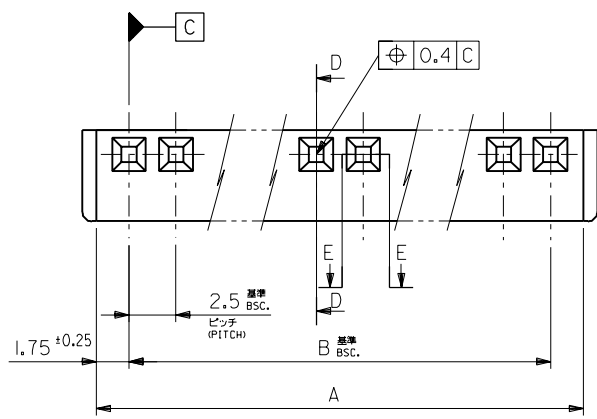
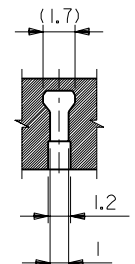


EDP NO. 10-30-8\*\*1  
ENG. NO. SD-5207-N

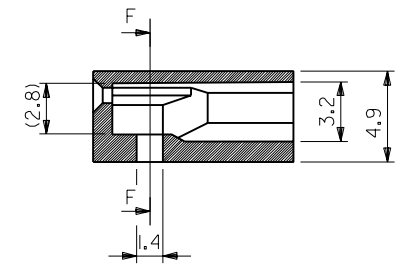
MM DIMENSIONS IN METRIC DO NOT SCALE DRAWING



断面E-E  
SECT.E-E



断面F-F  
SECT.F-F



断面D-D  
SECT.D-D

47.5	51	10-30-8201	5207-20	20
45	48.5	↑ -8191	↑ -19	19
42.5	46	-8181	-18	18
40	43.5	-8171	-17	17
37.5	41	-8161	-16	16
35	38.5	-8151	-15	15
32.5	36	-8141	-14	14
30	33.5	-8131	-13	13
27.5	31	-8121	-12	12
25	28.5	-8111	-11	11
22.5	26	-8101	-10	10
20	23.5	-8091	-09	9
17.5	21	-8081	-08	8
15	18.5	-8071	-07	7
12.5	16	-8061	-06	6
10	13.5	-8051	-05	5
7.5	11	-8041	-04	4
5	8.5	↓ -8031	↓ -03	3
2.5	6	10-30-8021	5207-02	2
B寸法 DIM.B	A寸法 DIM.A	EDP. NO.	ENG. NO.	極数 No. of CIRCUIT

注記:  
NOTES:  
1. 使用ターミナル: ENG. NO. 5103\*.  
TERMINAL: ENG. NO. 5103\*.

角度 ANGLE	±3°								材料 MATERIAL 66 ナイロン樹脂 NYLON 66 UL 94V-0	molex MOLEX-JAPAN CO.,LTD. 日本モレックス株式会社	
30以上 OVER	+0.3							仕上げ FINISH	— # —		
10以上 30未満 OVER UNDER	+0.25	C	再作図 REDRAWN	(JC2000-0788)	K.K. M.F.	00/5/29		適用電線範囲 WIRE RANGE	— # —	EDP. NO. 10-30-8**1	
10未満 UNDER	+0.2	記号 LTR	変更内容 REVISION RECORD	DR. CHK.	日付 DATE			被覆外径 INS. RANGE	— # —	ENG. NO. SD-5207-N	
一般公差 GENERAL TOLERANCES		REVISE ONLY ON CAD SYSTEM							DRAWN BY '00/5/29 K.KOHAMA M.FUKUSHIMA	尺度 SCALE 4-1	REV C
								APP'D BY '00/5/29 M.FUKUSHIMA		TITLE 名称 MINI SPOX HOUSING	

THIS DRAWING CONTAINS INFORMATION THAT IS PROPRIETARY TO MOLEX(JAPAN) AND SHOULD NOT BE USED WITHOUT WRITTEN PERMISSION  
本図面は日本モレックス(株)の所有する情報を含むもので 会社の許可なく複製を禁止する。

MXJ-8