

**Feature**

- Low Power Consumption
- High Intensity
- I.C. compatible

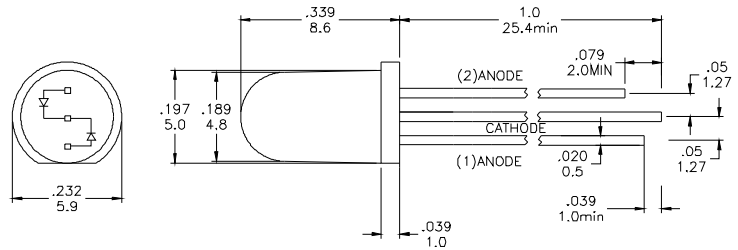
**Applications**

- Commercial Outdoor Sign Board
- Front Panel Indicator

**Description**

- The (1)Yellow and (2)Green Chips are Matched For uniform Light Output
- Diffusion Lens

**Package Dimension**



\* Tolerance:  $\frac{0.01}{0.25}$  Unit:  $\frac{\text{inch}}{\text{mm}}$

**Absolute Maximum Ratings at Ta = 25°C**

| Symbol | Parameter                                  | Max.          | Unit    |
|--------|--|---------------|---------|
| PD     | Power Dissipation                          | 100           | mW      |
| VR     | Reverse Voltage                            | 5             | V       |
| IAF    | Average Forward Current                    | 30            | mA      |
| IPF    | Peak Forward Current ( Duty = 0.1 , 1kHz ) | 100           | mA      |
| —      | Derating Linear Form 25°C                  | 0.4           | mA / °C |
| Topr   | Operating Temperature Range                | - 40 to + 80  | °C      |
| Tstg   | Storage Temperature Range                  | - 40 to + 100 | °C      |

Lead Soldering Temperature [1.6mm ( 0.063inch ) From Body] 260°C For 5 Seconds.

**Electrical / Optical Characteristics and Curves at Ta = 25°C**

| Symbol | Parameter           | Test Condition | Min. | Typ. | Max. | Unit |
|--------|---------------------|----------------|------|------|------|------|
| VF     | Forward Voltage     | IF = 20 mA     | Y    | 2.0  | 2.4  | V    |
|        |                     |                | G    | 2.0  | 2.4  |      |
| IR     | Reverse Current     | VR = 5 V       |      |      | 50   | μA   |
| IV     | Luminous Intensity  | IF = 20 mA     | Y    | 70   |      | mcd. |
|        |                     |                | G    | 63   |      |      |
| λd     | Dominant Wavelength | IF = 20 mA     | Y    | 590  |      | nm   |
|        |                     |                | G    | 570  |      |      |

Specific binning requirements- please contact our home office