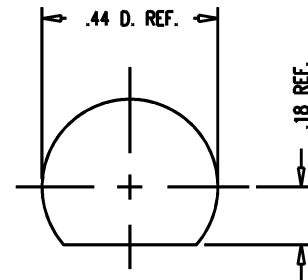
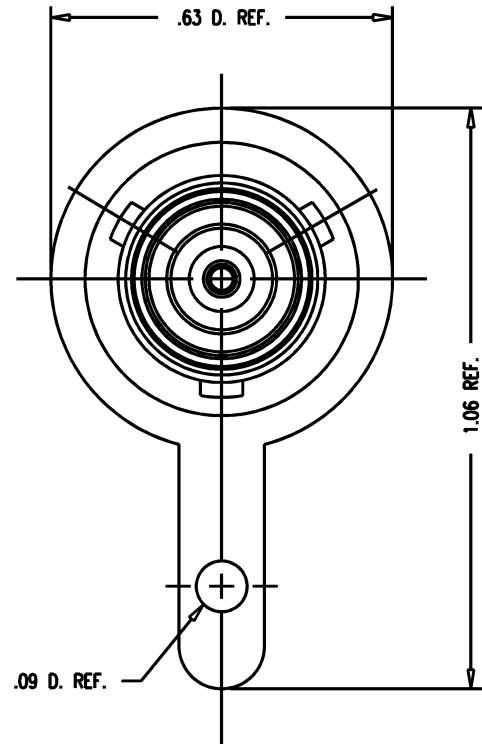
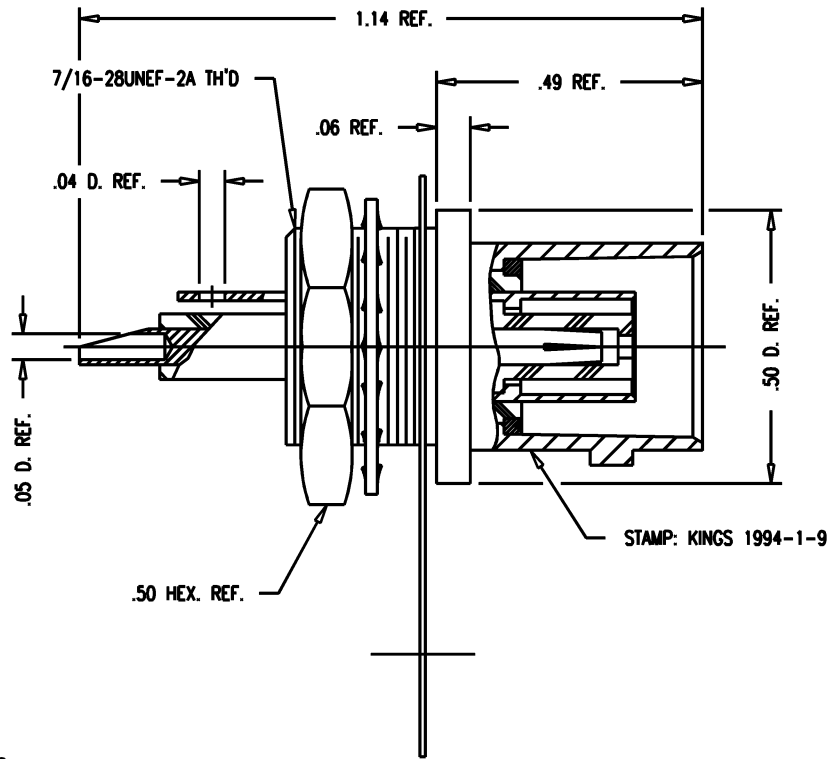


DASH NO.	M CODE	MADE FROM
----------	--------	-----------

# GSD

1994-1-9

REVISIONS	
ISSUE	CHANGES
5	CN 33012 A REDRAWN WJM 04/03/91
6	CN 35074 D MJB 11/09/93



MOUNTING HOLE

# GSD

**NOTES:**

- FOR USE WITH .122 MAX. PANEL THICKNESS.
- INTERFACE PER MIL-STD-348, FIG. 201-2.
- MATERIALS:  
INSULATORS: TEFLON, ASTM -D-1457  
CENTER CONTACT: BER. COPPER, ASTM-B-196  
ALL OTHER METAL PARTS: BRASS, QQ-B-626
- FINISHES:  
ALL CONTACTS: HARD GOLD PLATE, PER MIL-G-45204  
GROUNDING LUG: HOT TIN DIP, PER MIL-T-10727  
ALL OTHER METAL PARTS: KINGS TARNISH RESISTANT FINISH (TR-5)
- ELECTRICAL CHARACTERISTICS:  
NOMINAL IMPEDANCE: NON-CONSTANT  
WORKING VOLTAGE: 400 VRMS  
FREQUENCY RANGE: DC TO 5 MHz.
- SAME AS TROMPETER BJ77 IN FORM, FIT & FUNCTION.

WJM0927

SCALE	4:1		
APPROX SURFACE AREA			
WAS:	E-4723		
USED ON			
REF:			
RECEPTACLE, BULKHEAD, TRB			
DRAWN	WJM	DATE	04/04/91
DESIGN	VLS	DATE	05/03/91
APPR.		DATE	

**KINGS**  
ELECTRONICS CO., INC.  
TUCKAHOE, NEW YORK 10707

1994-1-9