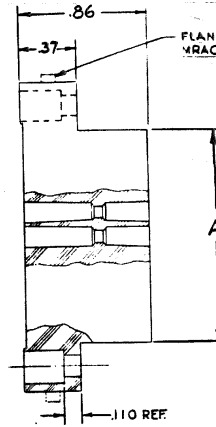


4-.118 DIA. HOLES
 C BORE .195 DIA.
 .260 DEEP EXCEPT
 SIZE 104 WHICH ARE
 .150 DIA.-C BORE .234 DIA.
 .260 DEEP

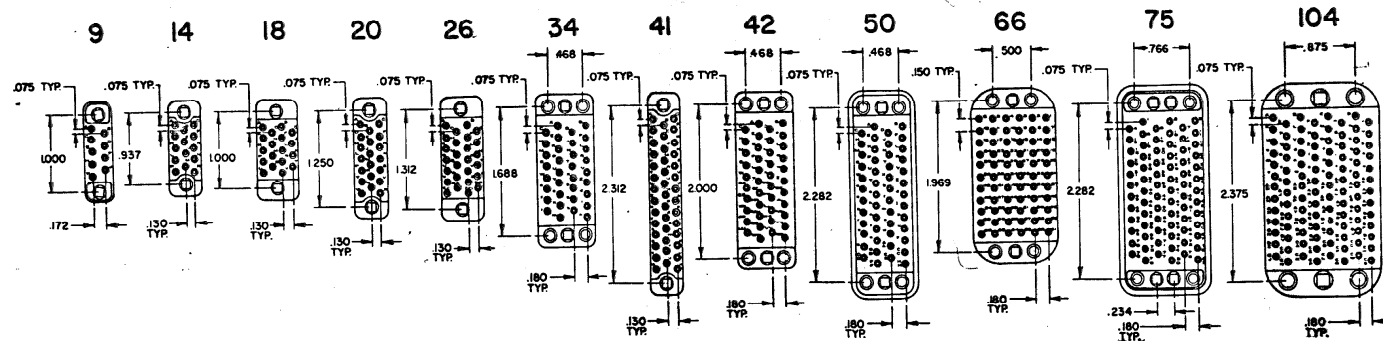


MRAC-34S SHOWN

MRAC	A	B	C	D	E
9	.81	1.31	.38		
14	.78	1.25	.44		
18	.77	1.31	.56		
20	1.07	1.56	.44		
26	1.07	1.63	.56		
34	1.38	2.00	.75		
41	2.13	2.63	.44		
42	1.67	2.31	.75		
50	1.97	2.59	.75	2.72	.88
66	1.67	2.28	1.13		
75	2.01	2.59	1.11	2.72	1.23
104	2.05	2.75	1.53		

FACES OF THE 'MRAC' MOLDINGS

FEMALE CONTACT NO 9 THRU 104
 (FULL SCALE)



19589 F

REWORKING ADJUST BASES

DATE: 8-11-58
 DRAWN BY: P.P. 15
 CHECKED BY: J.H. 12
 APPROVED BY: J.H. 12
 TITLE: REDRAWN FOR REVISION OF OLD PUL. PEN-INSECT. AND FINISH. WORKS. 2307

GENERAL NOTES UNLESS OTHERWISE SPECIFIED

- ALL DIMENSIONS ARE IN INCHES
- ALL DIMENSIONS ARE TO MAX.
- REMOVE ALL BURRS TO MAX.
- BREAK ALL SHARP EDGES TO .015" R. MAX.
- .015" R. MAX. ON INSIDE CORNERS.
- ALL DIAMETERS CONCENTRIC TO .001" TYP. OF
- GENERAL SURFACE FINISH TO BE 100
- TOLERANCES

CLASSIFICATION OF CHARACTERISTICS PER MIL-STD 105

MAJOR MINOR

TITLE: COMPOSITE OUTLINE

REVISION: MRAC *K S

MIL-M-14, TYPE SDG-F

WINCHESTER ELECTRONICS
 DIVISION OF LITTON SYSTEMS, INCORPORATED
 GAEVILLI, CONNECTICUT

DATE: 19589